



COMO

• RESIDENCES •

---

*The Palm*

**NAKHEEL**



Introduction

COMO RESIDENCES  
BY NAKHEEL

P. 3

Location

PALM  
JUMEIRAH

P. 17

The Story

THE VERTICAL  
LAKE

P. 27

Residences


LAVISH  
LUXURY LIVING

P. 39

Amenities

A CONTEMPORARY  
LIFESTYLE

P. 63

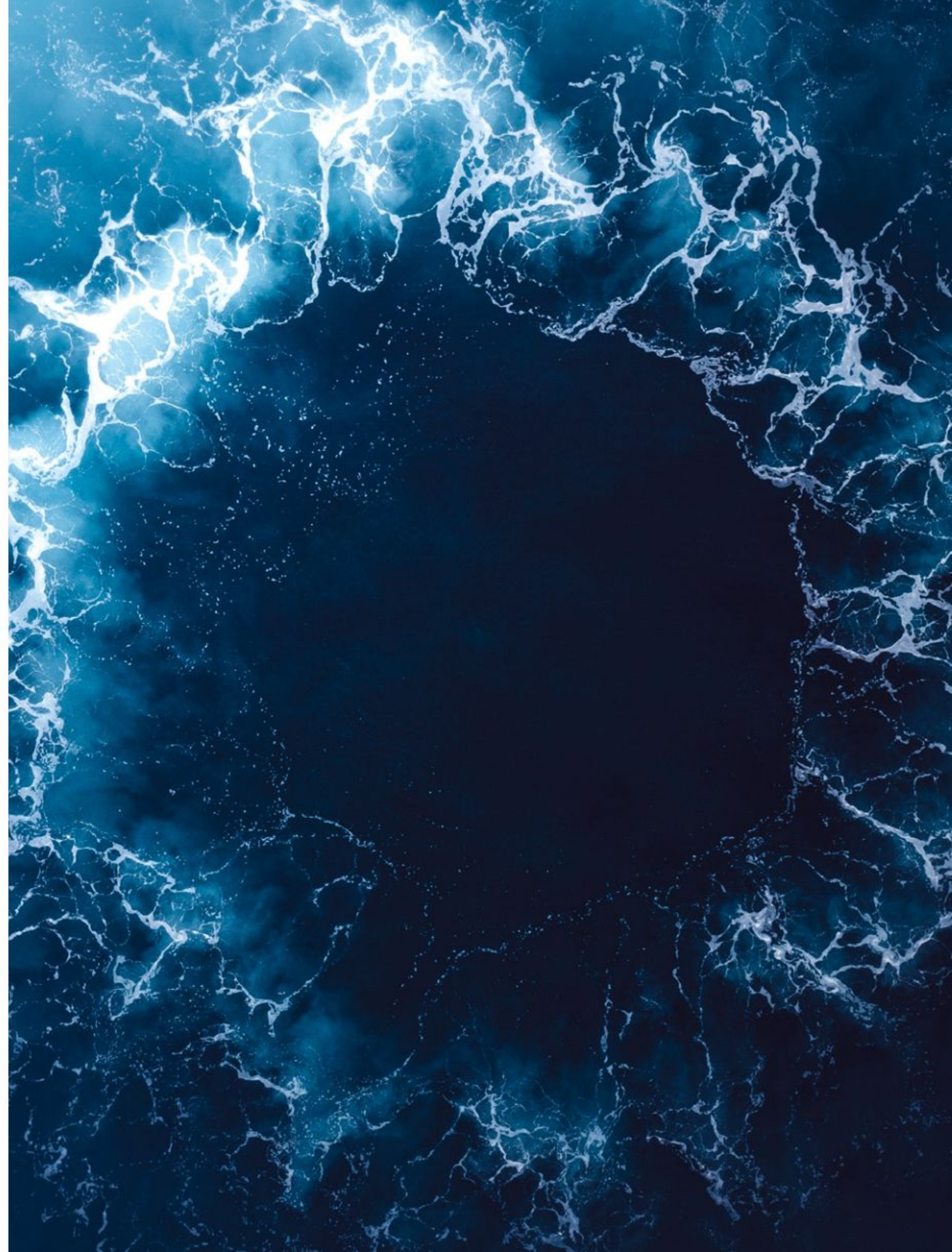


INTRODUCTION

COMO RESIDENCES  
BY NAKHEEL

NAKHEEL IS REDEFINING  
*the ART of* CITY LIVING

Harnessing the beauty of nature, Nakheel transforms land  
and water into innovative landmark destinations.





COMO RESIDENCES  
PRESENTS *the*  
COSMOPOLITAN  
MODE *of* LIVING

Como Residences blends the very best of the world's  
most luxurious destinations into one monumental,  
architectural landmark.



This water-inspired tower boasts 71 floors - each resembling a unique ocean wave. This is the latest chapter in Nakheel's ambitious vision for extraordinary waterfront life in Dubai.

COMO RESIDENCES TAKES THE SHAPE OF AN ORGANIC SEASHELL, RISING TOWARDS THE SKY. THIS ARTWORK IS INSPIRED BY THE GENTLE WAVES OF THE SEA AND SINUOUS CURVES LEFT IN THE SAND.



THIS ARCHITECTURAL MARVEL RISES  
IN THE HEART OF PALM JUMEIRAH  
AND PRESENTS A SPECTACULAR  
COLLECTION OF EXQUISITE PRIVATE  
RESIDENCES.

Experience the ultimate in prestigious living where  
unbeatable panoramic views, opulent interiors and  
exclusive amenities come together to create an unmatched  
cosmopolitan lifestyle.







LOCATION

PALM JUMEIRAH





## LIVE *in* THE HEART *of* PALM JUMEIRAH

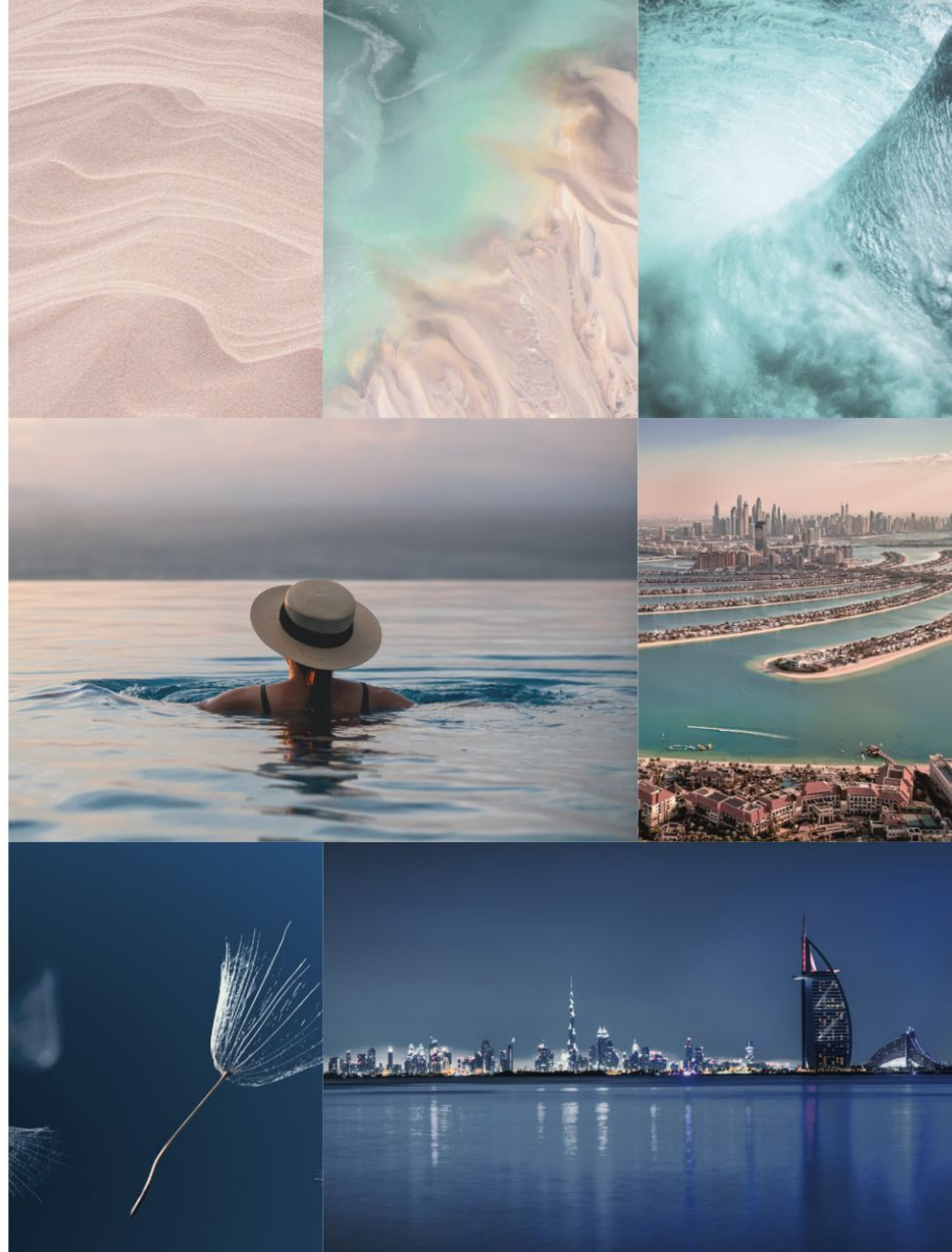
Como Residences is an indelible addition to one of the world's largest man-made islands. Palm Jumeirah is pushing the boundaries to offer the utmost in beachfront allure.

Discover the pinnacle of sophisticated beachfront living. This sleek, majestic tower rises above Palm Jumeirah, harmoniously blending into the world-renowned landscape of extravagant luxury resorts, high-end stores, entertainment venues and supreme dining destinations.



EMBRACE *the*  
GLAMOUROUS COASTAL  
LIFESTYLE

Live in the heart of Palm Jumeirah and simultaneously  
enjoy all the splendors of the city whilst indulging in a  
glamorous beachside lifestyle.



A DREAM  
DESTINATION  
SURROUNDED  
BY SEA, SUN  
*and* STYLE

From high-end shopping to glamorous events  
at luxury beach clubs, the best of Palm Jumeirah is at  
your fingertips.





THE STORY

THE VERTICAL  
LAKE



## A UNIQUE TOWER *of* VERTICAL LAKES

Soak up the serene atmosphere as you  
enjoy water activities from sunrise to  
sunset.



The statement structure is sculpted into a series vertical lakes, including a variety of communal pools and a selection of exclusive private pools.

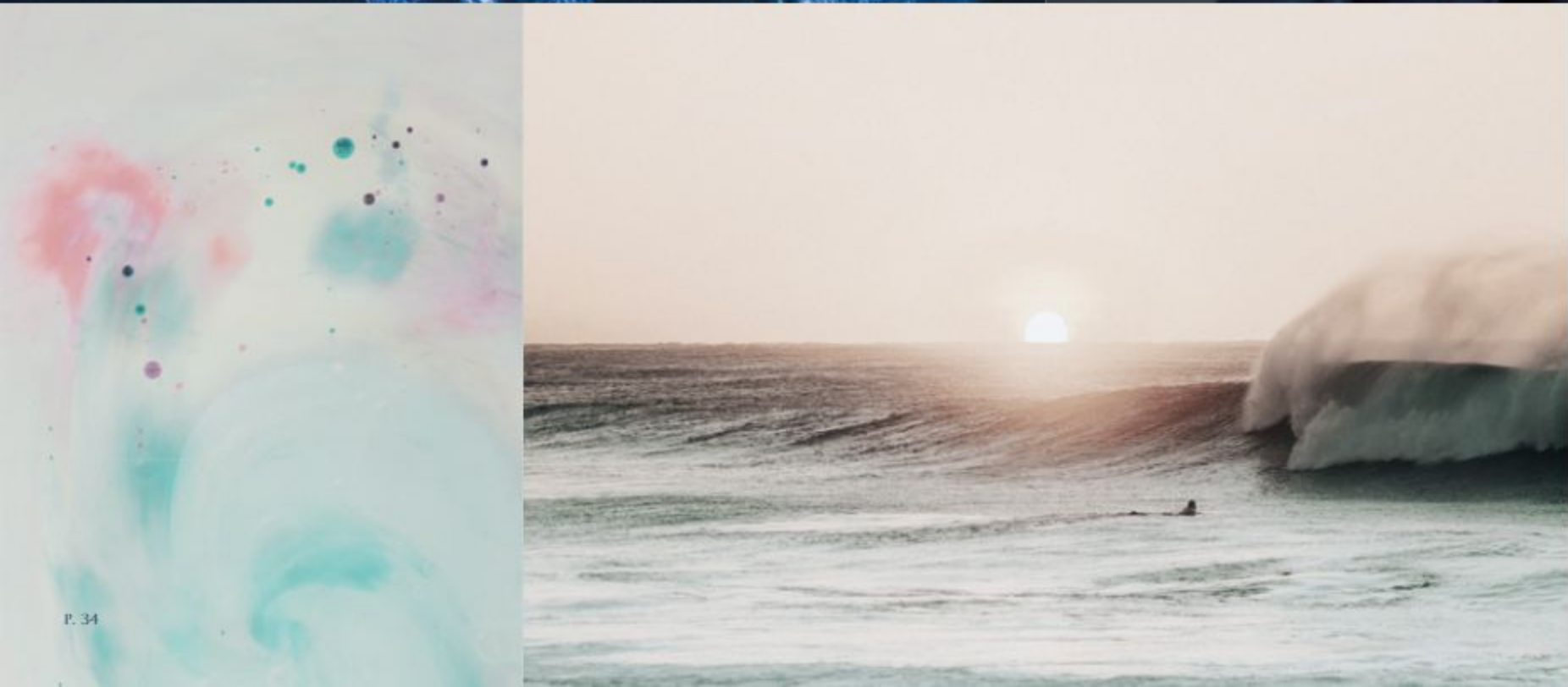
COMO RESIDENCES PRESENTS  
A CREATIVE SERIES OF LEISURE  
POOLS WHERE WATER BECOMES  
A MAGICAL ELIXIR.



# A PLACE WHERE YOU CAN TRULY FEEL ALIVE

A soaring landmark tower which presents you with a new perspective. A place where every moment is filled with tranquillity, passion and possibility.





EXPERIENCE  
THE BEST *of*  
ALL WORLDS,  
WITHOUT  
LEAVING HOME

PALM JUMEIRAH'S NEWEST  
LANDMARK ALLOWS YOU TO ENJOY  
A TRULY WORLD-CLASS LIFESTYLE.

Explore sweeping terraces with glistening pools and verdant greenery, gaze out at breathtaking views over the sea and cityscape, and relax in wonderfully spacious homes with outstanding amenities. The exclusive collection of luxury apartments and exceptional amenity suite offers residents an ultra-chic, cosmopolitan lifestyle surrounded by art and beauty.



RESIDENCES

LAVISH LUXURY  
LIVING



## EXCLUSIVE CRAFTED DETAILS *for* BESPOKE LUXURY LIVING

Immerse yourself in sophisticated interiors.  
The craftsmanship can be seen in the meticulous  
attention to detail and the exquisite quality of  
the design.

## MAGNIFICENT TERRACES WITH VIEWS OVER *the* ICONIC CITY SKYLINE

Extremely spacious interiors lead out onto vast terraces embellished with lush greenery and unique private pools. Admire breathtaking views towards Burj Al Arab, Burj Khalifa, Palm Jumeirah, and Ain Dubai as you relax and breathe in the fresh sea air. Each exclusive apartment enjoys either 180- or 360-degree panoramic views.



A COLLECTION *of*  
EXCEPTIONALLY SPACIOUS  
RESIDENCES IN *the* SKY

This exclusive collection of private residences offers a range of spacious layouts and exclusive features. Choose the home that best compliments your ideal contemporary cosmopolitan lifestyle.







EACH HOME BECOMES A HAVEN OF PEACE AND TRANQUILITY IN THIS LANDMARK TOWER.

As you live above the dazzling blue sea, in the privacy of this exclusive collection of residences located in the sky, each moment is filled with serenity. Feel the romance and grandeur of living in a one-of-a-kind residence.



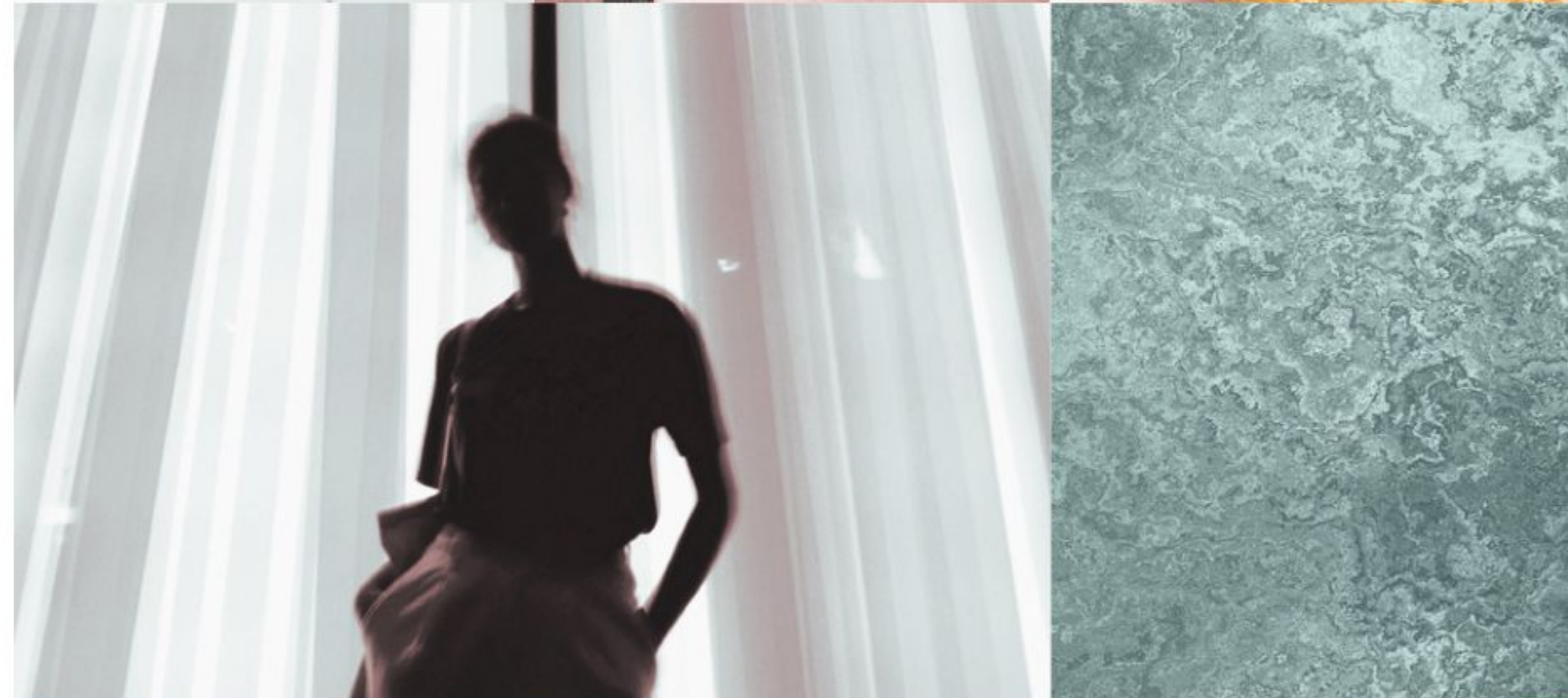






SURROUND  
YOURSELF WITH  
BEAUTY, LUXURY,  
*and* COMFORT

The excellence that sets Como Residences apart is the  
exclusiveness of the various typologies.





EMBRACE *the* BENEFITS  
*of* SEAMLESS  
INDOOR-OUTDOOR  
LIVING

Each showstopping residence offers the opportunity to live in refined elegance and sophistication whilst embracing the coastal lifestyle.







AMENITIES

THE CONTEMPORARY  
LIFESTYLE



PRIVATE SANDY  
BEACH POOL  
LOCATED AT THE  
PODIUM LEVEL



DEDICATED  
25M LAP  
SWIMMING POOL



LANDSCAPE  
RECREATIONAL  
AREAS



PADDLE COURTS  
AND SQUASH  
COURTS



GYMNASIUM, SPA  
AND WELLNESS  
CENTER



ROOFTOP AND 360  
DEGREE VIEWING  
AREA LOCATED  
ON LEVEL 71 WITH  
AMENITIES



PRIVATE SWIMMING  
POOLS FOR  
SKY TERRACE  
APARTMENTS



CHILDREN'S WET  
AND DRY PLAY  
AREAS



PRIVATE  
CAFÉ  
LOUNGE



BUSINESS CENTER  
WITH MEETING  
ROOMS



CONCIERGE  
SERVICE



SEPARATE DRIVERS  
QUARTERS



EACH UNIT HAS  
INDEPENDENT AND  
SECURE STORAGE  
COMPARTMENTS



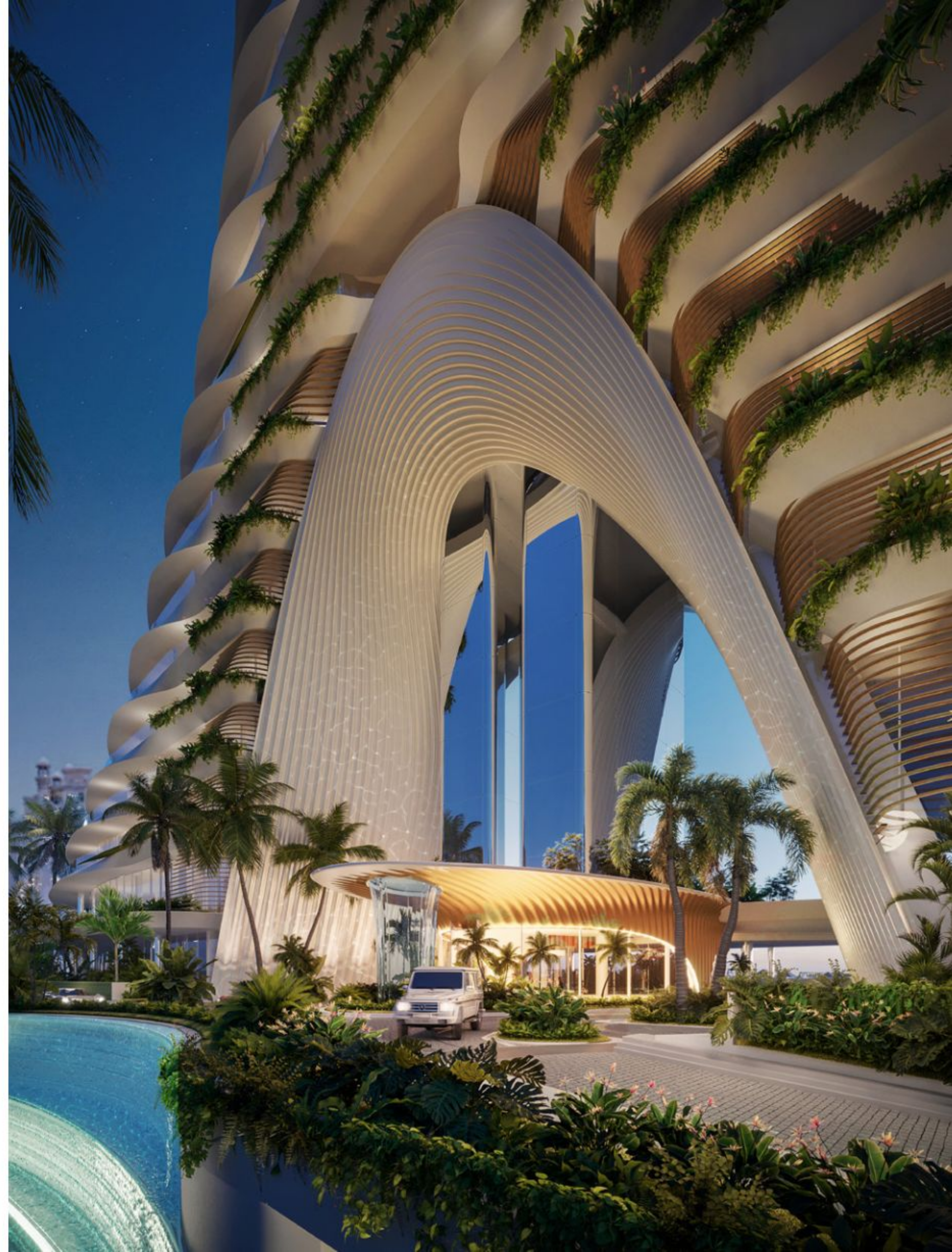
GENEROUS  
PARKING  
PROVISIONS



PRIVATE LIFT  
LOBBY TO EACH  
RESIDENCE

THE MASTERPIECE  
WITH THE GRANDEST *of*  
ENTRANCES

A grand entrance that opens up a  
gateway to an exclusive community  
and a dawn of new cosmopolitan  
mode of living.





## A SPECTACULAR LOBBY WILL WELCOME YOU HOME IN STYLE

Experience a truly harmonious lifestyle with daily assistance from the attentive concierge-services.

TRAVEL IN STYLE *with*  
YOUR OWN PRIVATE  
LIFT LOBBY

Smart home details and exclusive facilities  
are inspired by the innovative spirit of Dubai.



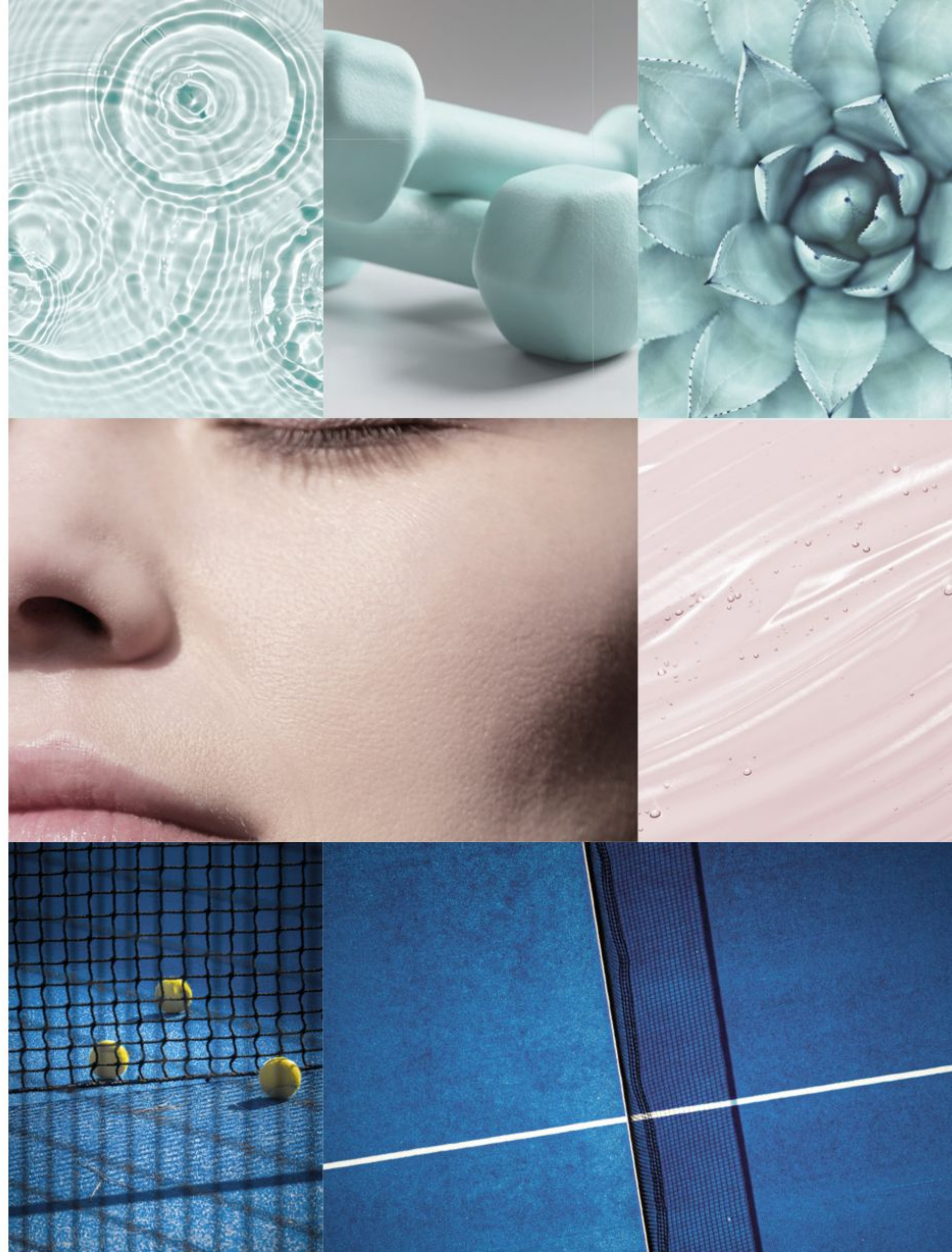


## SEAMLESS SERVICES AKIN *to a* LUXURY HOTEL

Feel as though you are enjoying a never-ending holiday from the comfort of your own private home.

A WIDE ARRAY *of*  
WELLNESS AMENITIES *for a*  
BALANCED LIFESTYLE

Como Residences paints the perfect portrait of contemporary living with a wide array of active activities for every mood.





## A SURREAL ROOFTOP POOL *with 360°* VIEWS *of* THE CITY

Water is an essential component of Como Residences. Luxuriate in the serenity of the rooftop pool on the 71<sup>st</sup> floor as you float in glittering water.



THE AWE-INSPIRING INFINITY POOL, WITH A SUBLIME VIEWING DECK, OFFERS THE HIGHEST VIEWING POINT IN ALL OF PALM JUMEIRAH.

At night, the pool area transforms into a magical wonderland, a galaxy of dazzling lights from the illuminated city below, creating a truly enchanting ambiance. Socialise above the city and enjoy the full panorama of luxury living.



A SERENE *and*  
SOPHISTICATED LIFESTYLE  
AWAITS YOU.

Como Residences is your own personal beachfront haven. The awe-inspiring sunrise to sunset views will continuously amaze you. Relax and unwind in this remarkable beachfront paradise in the sky.



# COMO

• RESIDENCES •

---

## *The Palm*

### CONTACT INFORMATION:

800 NAKHEEL  
info@nakheel.com

### SALES CENTRE:

King Salman Bin Abdul Aziz Al Saud Street,  
Al Sufouh 2 - King Salman Bin Abdulaziz Al  
Saud St - Dubai

**NAKHEEL**

This publication is for illustrative purposes only. Some of the images shown in the document were developed with computer graphics technology (photorealistic rendering), with reference to details of the façade and elevations, common areas, private areas and interiors of the apartments, for the sole purpose of presenting a plan for future realization and/or the various, potential solutions following user customization. All furniture and art are represented for marketing and rendering purposes only. For this reason, all information, descriptions and images are purely indicative and subject to change. This document has no contractual value and is not binding on the investment company that owns the rights and information reported. The reproduction and the partial use of texts and images is forbidden without prior authorization.



