

ROSEMONT

RESIDENCES

LIVE BY DESIGN

WE BUILD HOMES THAT INSPIRE

Our vision is to create living spaces that add value and contentment every day, supporting people as they journey towards their dreams and aspirations. Built in thoughtfully selected locations to ensure superb long-term return on investment, Ellington Properties is Dubai's leading boutique property developer that values functionality as much as aesthetics. We believe in creating spaces that enable people to live better lives, which is why we craft homes with meticulous attention to every last detail.

Along with sought-after communities in prestigious districts such as Downtown Dubai and Palm Jumeirah, Ellington Properties ventures into a new family community to cater the growing demands of its customers who values a sense of belonging with originality.





WELCOME TO

ROSEMONT

RESIDENCES



PALM
JEBEL ALI

PALM JUMEIRAH

THE WORLD

←
TO
ABU DHABI

DUBAI MARINA

BURJ AL ARAB

→
TO SHARJAH &
NORTHERN EMIRATES

MALL OF
THE
EMIRATES

DOWNTOWN DUBAI
& BURJ KHALIFA

DUBAI
INTERNATIONAL
AIRPORT

ROSEMONT
RESIDENCES

JUMEIRAH
VILLAGE
CIRCLE

DUBAI
AUTODROME

• DUBAI WORLD CENTRAL

JUST MOMENTS AWAY FROM DUBAI'S BEST ATTRACTIONS

 4 Minutes Sunmarke School	 16 Minutes Circle Mall	 19 Minutes Dubai Hills Mall	 25 Minutes Jumeirah Beach
 5 Minutes Arcadia School	 17 Minutes Palm Jumeirah	 22 Minutes Dubai Hills Golf Club	 25 Minutes Burj Khalifa
 14 Minutes Montgomerie Golf Club	 18 Minutes Mall of the Emirates	 21 Minutes Burj Al Arab	 30 Minutes Dubai International Airport
 13 Minutes Dubai Marina	 18 Minutes Jumeirah Golf Estate	 22 Minutes Dubai World Central Airport	

JUMEIRAH VILLAGE TRIANGLE

A distinctive family-friendly community surrounded by lush landscaped communal areas and parks, Jumeirah Village Triangle is home to a several mixes of villas, townhouses and apartments with a thoughtful selection of entertainment and leisure options ideal for families and small communities.

Located in District 2 of Jumeirah Village Triangle, Rosemont Residences is strategically located close to major highways, community parks and International Schools, yet away from the hustle and bustle of the city.

- 01 Rosemont Residences
- 02 Community Parks
- 03 JVT Water Fountain
- 04 Arcadia School
- 05 JVT Pond
- 06 Soccer Field
- 07 Basketball Courts
- 08 Basketball Pitch
- 09 Tennis Courts
- 10 Sunmarke School
- 11 Supermarket
- 12 Al Khail Avenue Mall
- 13 Dog Park



ROSEMONT

RESIDENCES

Rosemont Residences is a residential building with a distinct design and a unique character within a family-centered community. The building's design prioritizes comfort, convenience, and elegance while blending in seamlessly with the surrounding neighborhood while providing residents with a serene environment to call home. Rosemont Residences comprises 47 units ranging from spacious 1 and 2-bedroom apartments.





FAÇADE

BOLDLY REDEFINED
MODERN LIVING

The contemporary architecture of the façade is uniquely pleasing with its clean lines, minimalist design, and focus on functionality. The large windows create a sense of openness and connection with the surrounding environment while the spacious balconies provide additional outdoor living space and a way to take advantage of the views.

LOBBY

BE WARMLY WELCOMED

The lobby is a well-thought-out and harmonious combination of natural elements and modern design, creating a space that is both inviting and functional for its residents and guests. The open-shelving units filled with curated books, games, and puzzles add a personal touch and provide residents and guests with a source of entertainment and relaxation. The expansive windows and double-height volume create a sense of openness and light, while the use of residential feel curtains adds warmth and comfort to the space. By providing a functional workspace and ample hospitality, the lobby serves as a gathering place for residents and guests, encouraging interaction and socialization.





P O O L

D I V E I N T O Y O U R P E R S O N A L O A S I S

The resort-style pool is an enjoyable oasis, featuring sparkling blue water that shimmers in the sun. The pool is situated on a high point overlooking the community and offering breathtaking views of the surrounding area. The pool is surrounded by lush greenery and towering palm trees that provide a tropical ambiance. The pool deck features numerous sun loungers where residents can relax and bask in the sun. For the little ones, there is a kids' splash pad located adjacent to the pool. The splash pad is designed to be safe and fun for children of all ages, and it features various water jets, where kids can run and play as parents unwind nearby.

FITNESS STUDIO

UNLEASH YOUR POTENTIAL & ELEVATE YOUR MIND

The Fitness Studio at Rosemont has been designed with the guidance of international experts to ensure a high level of quality in every aspect, from the layout of the gym equipment to the acoustics and materials used. The fitness studio is also an open space with plenty of natural light and a strong active environment to help motivate and energize residents. Along with unobstructed views of the pool, plenty of cardio equipment, free weights, and yoga space, the fitness studio caters to the day-to-day needs of residents.





KIDS' PLAY AREA

WHERE FUN &
LEARNING COME
TOGETHER

The kids' play area is a wonderful environment for children to learn and play, it offers a variety of educational games that encourage creativity and early development. Providing ample space for children to actively engage with each other, fostering strong relationships, and creating memorable experiences. The kids' play area also draws inspiration and is a fantastic resource for parents who want to provide a fun and educational experience for their children.

LIVING ROOM

EMBRACE THE ELEGANCE OF CONTEMPORARY LIVING

The design of the living room emphasizes practicality, views, and access to the outdoors while creating an inviting atmosphere that blurs the boundaries between the indoors and outdoors. It is a spacious, open space that merges with the dining area and kitchen to create a seamless flow of living space, this open layout allows for easy entertaining and socializing with family and guests. With floor-to-ceiling windows, the living room is also naturally lit which creates a connection with the outdoors and a peaceful atmosphere.



KITCHEN

WHERE THE HEART OF THE HOME MEETS THE ART OF COOKING

The kitchen at Rosemont serves as the center of the home and features the Ellington-style kitchen island that provides additional countertop space with bar seating for casual dining or entertaining along with high-quality appliances that are designed for both usability and longevity. With an open-concept layout and plenty of cabinetry and storage space to optimize functionality, the kitchen is designed with the needs of the cook in mind. While the premium finishes that are both functional and visually appealing, add to its overall aesthetic.

BEDROOM

UNWIND IN SOPHISTICATION & COMFORT

The bedrooms are cozy and inviting spaces, the wood look tile floors and sunlit windows create a warm and welcoming atmosphere, perfect for relaxing and unwinding. While the wood-look laminate finish on the wardrobes adds a touch of elegance and sophistication. The wardrobes provide ample storage space ensuring plenty of room to keep residents' belongings organized and easily accessible. All these features create a peaceful oasis to rest.





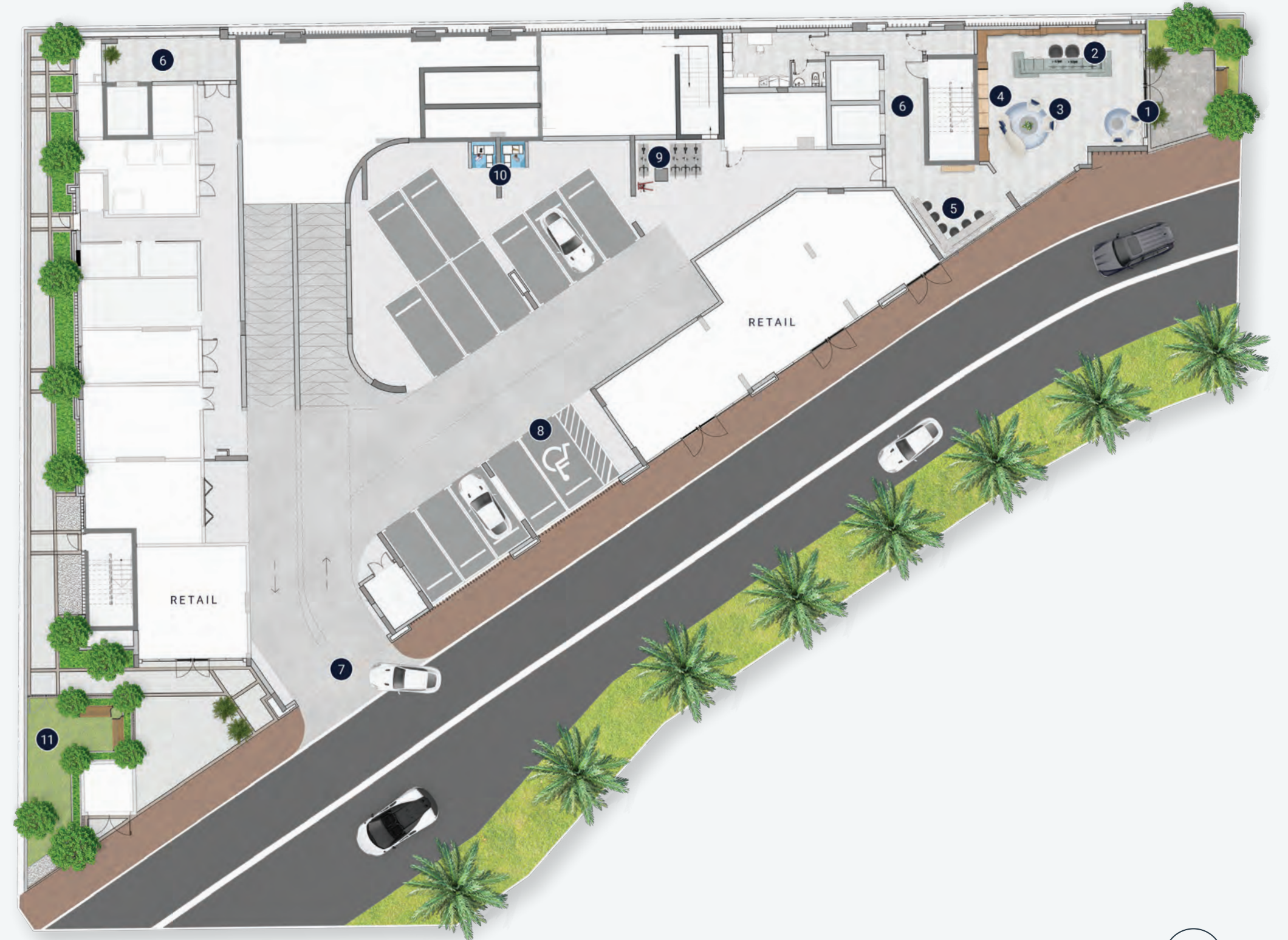
BATHROOM & POWDER ROOM

REFRESH & RENEW IN YOUR PERSONAL RETREAT

The bathrooms are designed to enhance the residents' experience. The porcelain floor tiles add a touch of sophistication while also providing a durable and easy-to-clean surface. The glassed-in showers with both hand showers and rain shower heads offer a pleasant spa-like experience for daily bathing. The stone-look countertops with under-mount sinks not only add to the aesthetic appeal of the space but also its practicality. The addition of cabinets and shelves provides convenient storage for everyday bathroom necessities.

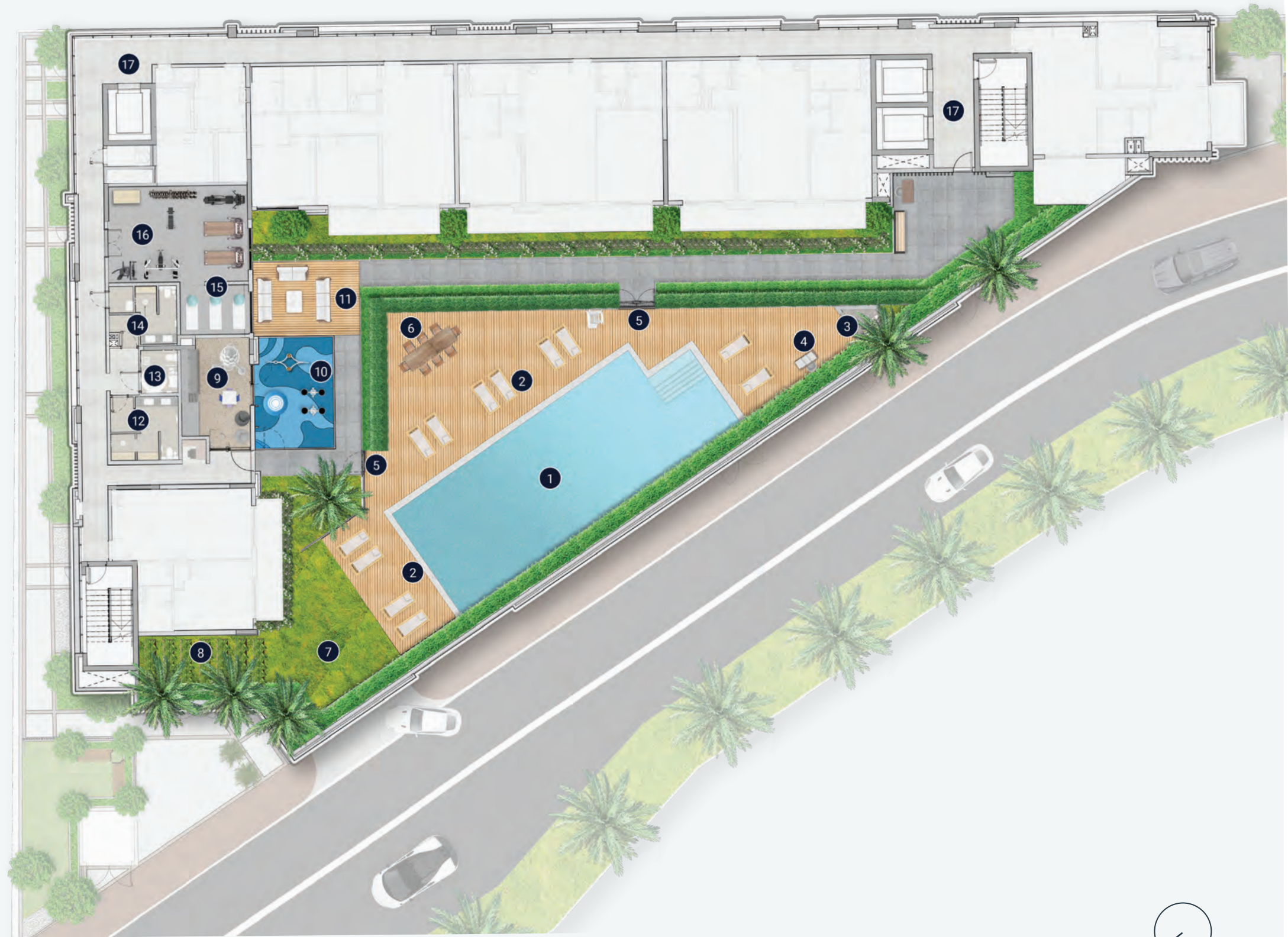
GROUND FLOOR
AMENITIES PLAN

- 01 MAIN ENTRANCE
- 02 LOBBY RECEPTION
- 03 LOBBY LOUNGE
- 04 LIBRARY WALL
- 05 COMMUNAL TABLE
- 06 LIFT LOBBY
- 07 VEHICULAR ENTRANCE / EXIT
- 08 PARKING FOR PEOPLE OF DETERMINATION
- 09 BICYCLE PARKING
- 10 DOG WASH AREA
- 11 DOG PARK



FIRST FLOOR AMENITIES PLAN

- 01 LEISURE AND LOUNGE POOL
- 02 POOL SUN LOUNGERS
- 03 OUTDOOR SHOWER
- 04 TOWEL STATION
- 05 ACCESS TO POOL DECK
- 06 OUTDOOR DINING AREA
- 07 HERB GARDEN
- 08 KIDS PLAY AREA
- 09 OUTDOOR KIDS PLAY AREA
- 10 OUTDOOR LOUNGE AREA
- 11 FEMALE CHANGE ROOM
- 12 BATHROOM FOR PEOPLE OF DETERMINATION
- 13 MALE CHANGING ROOM
- 14 YOGA AREA
- 15 FITNESS STUDIO
- 16 LIFT LOBBY



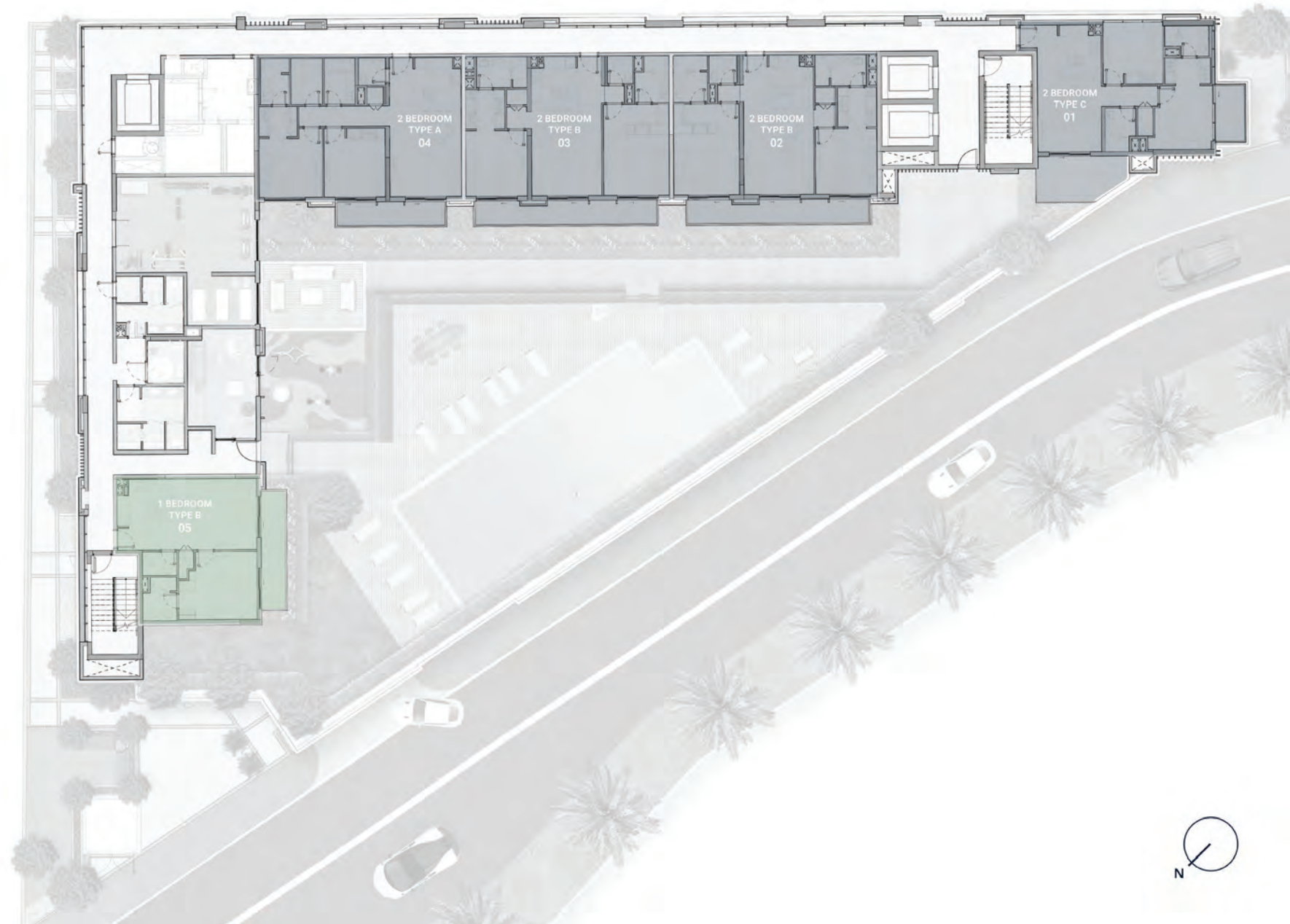
TYPICAL PLAN

1ST FLOOR PLAN

2ND - 5TH FLOOR PLAN

1ST FLOOR PLAN

- 1 BEDROOM APARTMENTS
- 2 BEDROOM APARTMENTS



2ND - 5TH FLOOR PLAN

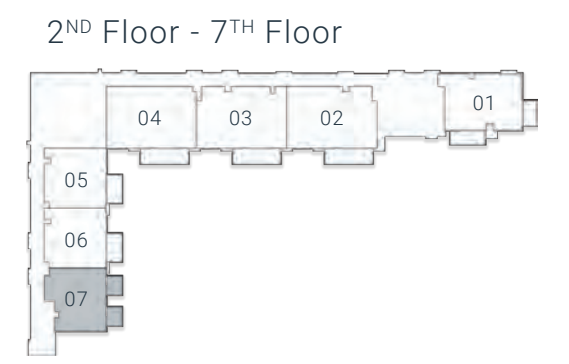
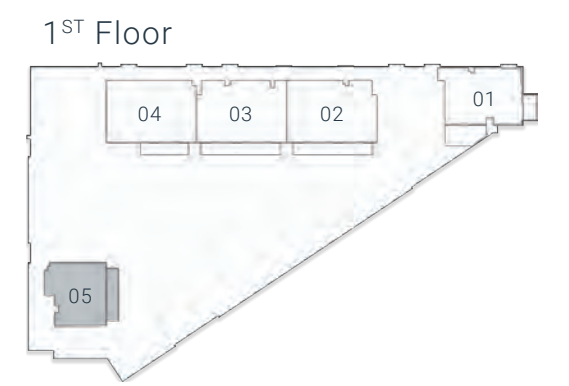
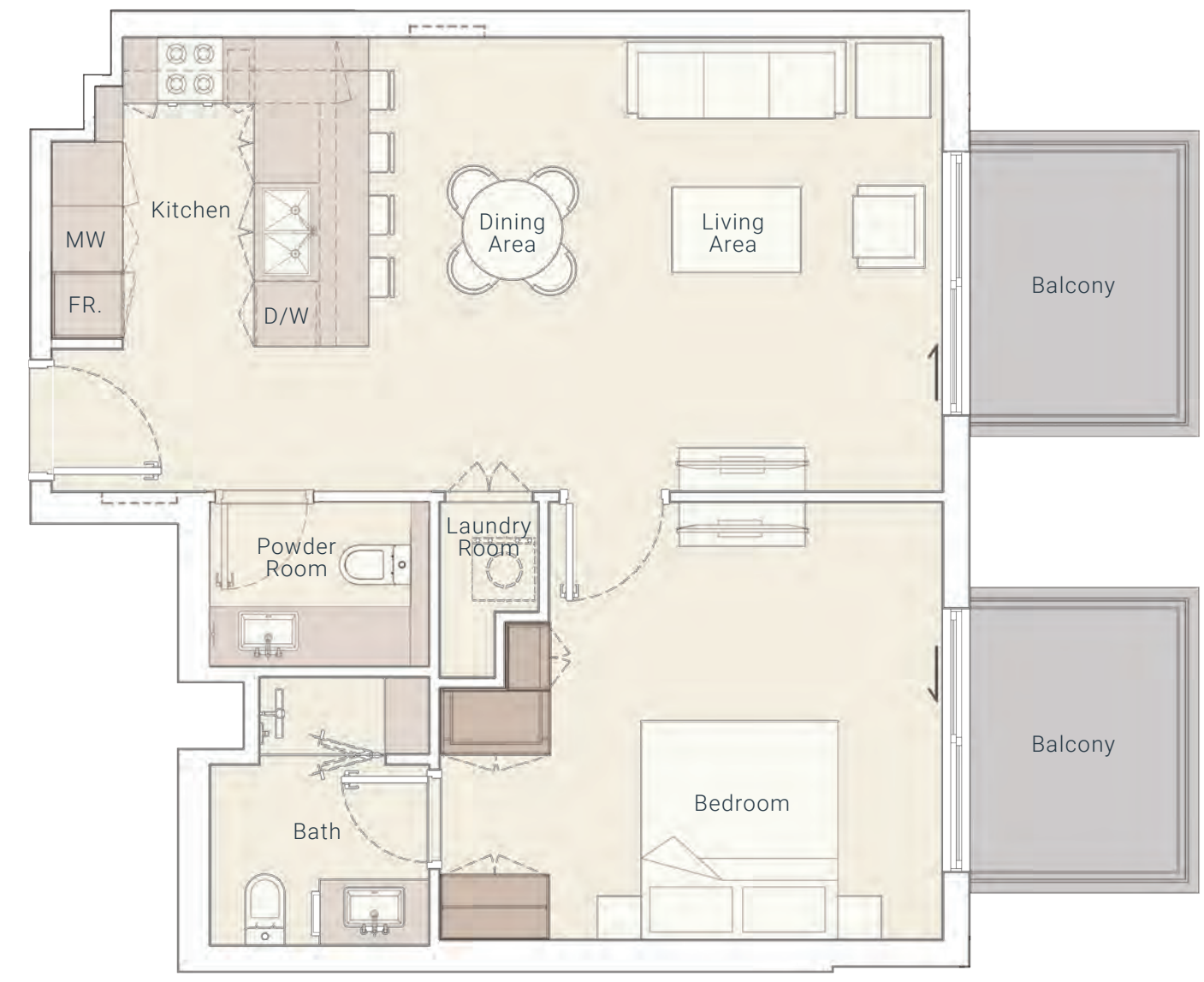
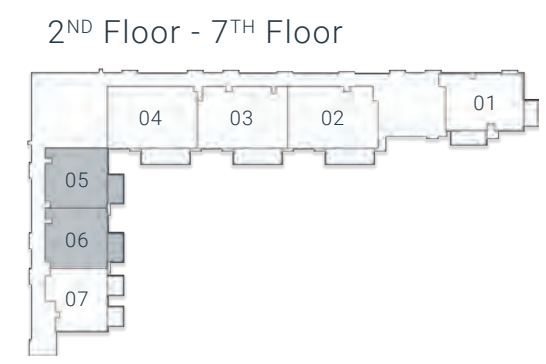
- 1 BEDROOM APARTMENTS
- 2 BEDROOM APARTMENTS



FLOOR PLAN

1 BEDROOM TYPE A

1 BEDROOM TYPE B



Internal Living Area 710.20 sq.ft.

Outdoor Living Area 88.16 sq.ft.

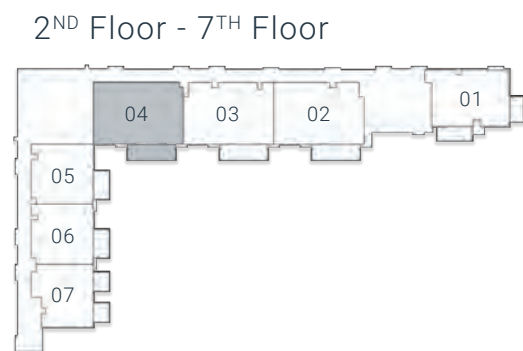
Total Living Area 798.36 sq.ft.

Internal Living Area 695.56 sq.ft.

Outdoor Living Area 117.11 sq.ft.

Total Living Area 812.68 sq.ft.

2 BEDROOM TYPE A

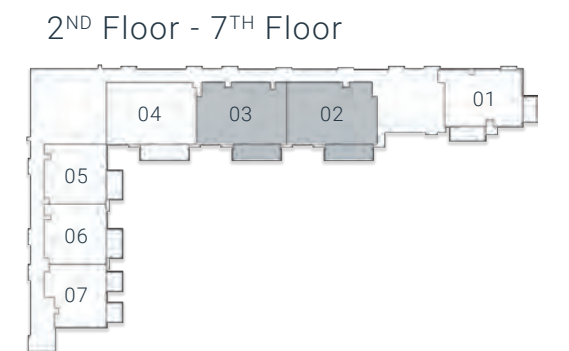
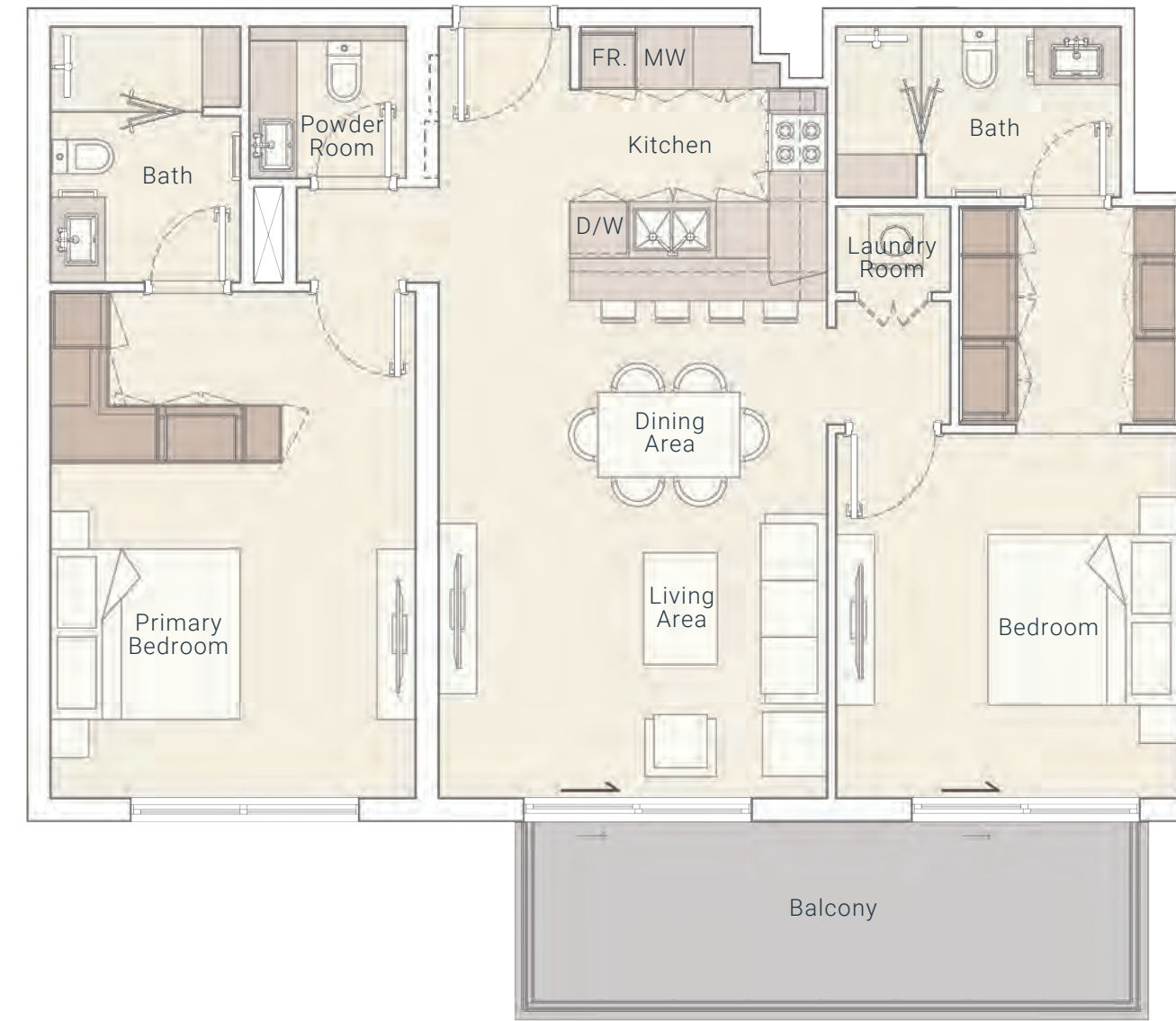


Internal Living Area 1080.80 sq.ft.

Outdoor Living Area 147.36 sq.ft.

Total Living Area 1228.16 sq.ft.

2 BEDROOM TYPE B

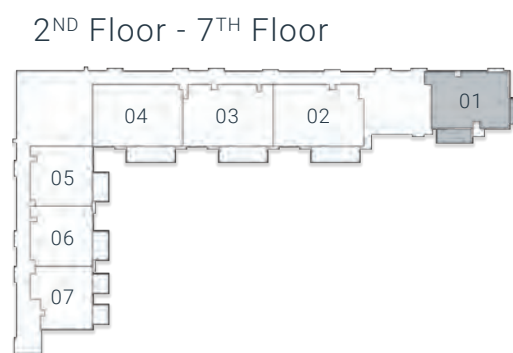
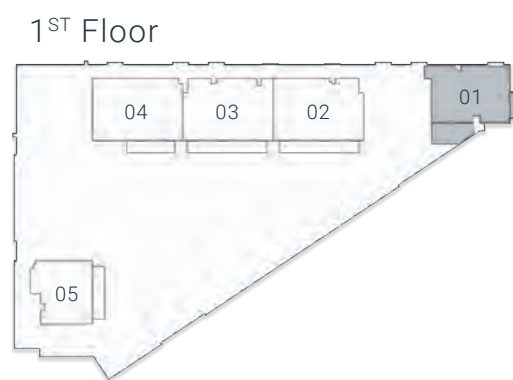


Internal Living Area 1073.81 sq.ft.

Outdoor Living Area 147.36 sq.ft.

Total Living Area 1221.17 sq.ft.

2 BEDROOM TYPE C



Internal Living Area 859.07 sq.ft.

Outdoor Living Area 165.55 sq.ft.

Total Living Area 1024.62 sq.ft.



ELLINGTONPROPERTIES.AE