

BVLGARI

LIGHTHOUSE

DUBAI

I
BVLGARI

II
DVBAI

III
MERAAS

IV
JVMEIRA BAY

V
BVLGARI LIGHTHOUSE

VI
PENTHOUSES



B
BVLGARI



Founded in Rome in 1884 by the talented silversmith Sotirio Bulgari, the Bulgari brand has quickly established a reputation for Italian excellence with exquisite craftsmanship and magnificent jewellery creations.

BULGARI HOTELS & RESORTS
A LUXURY COLLECTION.
UNMISTAKABLY BULGARI.

Bulgari is now curating and developing one of the leading luxury hospitality collections in the world. Comprised of a few, selected properties in major cosmopolitan cities and luxury resort destinations, Bulgari Hotels & Resorts aims to convey the excitement of the Bulgari brand, its timeless glamour, and its heritage from a magnificent Roman jeweller.





II
DUBAI

A CITY WITH A VISION



Dubai never stops surprising the world with its agility and determination; a city led by a very sharp vision that challenges the impossible and races against time in its pursuit of excellence. Beyond the vision and the agility are intangible components that characterise Dubai—a vibe, aura, and charm that are quintessentially its own. From a sea of sand with a few hotels and a modest infrastructure in the 1980s, Dubai has emerged as a global hub for business and tourism, boasting an impressive number of international brands and some equally astounding landmarks that dominate its iconic skyline.



III
MERAAS

AN EMPHASIS ON SOPHISTICATION AND INNOVATION

Meraas is committed to creating and consistently delivering world-class real estate projects and master developments that strengthen Dubai's position as the global real estate investment destination of choice.

Meraas' cutting-edge portfolio comprises of some of the most prominent and recognised real estate developments in the Emirate, such as City Walk Residences, Bluewaters Residences, Nikki Beach Residences and, of course, Bulgari Residences. It's this emphasis on sophistication and innovation, in the pursuit of delivering best in class projects, that sets Meraas apart.





IV
JUMEIRA BAY

JUMEIRA BAY ISLAND



An exclusive sanctuary of peace and tranquility, Jumeira Bay Island is a vibrant tapestry of gardens, pools and quiet boulevards, bathed in the unique natural light found on the Dubai coastline. In classic Bulgari style, the intricate patterns

of the architectural coral project soft shadows onto the black and gold Paonazzo marble. Opulent Bulgari chandeliers positioned along the bay create the impression of jewel lined waters. The perfect backdrop to luxury living.

The background of the image is a light-colored, marbled surface with intricate, wavy patterns in shades of grey and white. The overall texture is smooth and elegant. In the lower right quadrant, there is a logo consisting of a stylized 'V' symbol above the text 'BVLGARI LIGHTHOUSE' in a clean, sans-serif font.

V
BVLGARI LIGHTHOUSE

Introducing the Bulgari Lighthouse. Sublime living spaces suspended between sea and sky. Reflecting the Bulgari values of unrivalled craftsmanship, thoughtful precision, and timeless elegance. A statement home within any collection, the Bulgari Lighthouse provides the perfect retreat, cocooned in coral in the heart of an ever-changing natural canvas.

SUSPENDED BETWEEN SEA AND SKY



COCOONED IN CORAL

This statement building represents a bold, elevated presence within a low-rise resort. Exquisitely curated spaces are separated by layers of architectural coral that create stylish, liveable outdoor spaces on every floor.

A treasured natural material, coral is both a literal and metaphorical inspiration for the building design, providing protection, privacy, and peace.



WHERE LAND MEETS SKY



A building born out of its magnificent location; a private island secluded in the middle of the sea. The Bulgari Lighthouse is a place of tranquility and peace, where residents can take in the ever-changing natural landscape surrounding them. Its vertical structure contrasts the horizontal extension of the resort.



The Bulgari Lighthouse rises from sea to sky, illuminating the skyline and providing a sanctuary of solace and serenity. This unique place is where architecture and the natural landscape collide to create an ever-changing canvas of contrasts. Light is fundamental to the design and mood of spaces.

The lighting design of the Bulgari Lighthouse façade takes inspiration from the natural and gentle movements of marine corals in the sea, creating living and breathing light patterns, which evolve and change from day until night.

A BEAM
OF LIGHT

A TAILORED EXPERIENCE

From the infinity pool to the Mediterranean gardens, every aspect of the Bulgari Lighthouse is managed and serviced by the adjacent Bulgari Resort and is designed to provide an extremely private and personal experience. An attentive concierge is on hand to meet residents' every need, whether it's arranging a private party on the Sunset Lawn or booking a signature chef to prepare an exclusive dinner within your villa.



SPECTACULAR SUNSETS AND CELEBRATIONS



Designed for intimate gatherings, the stunning private events lawn for residents is a beautiful location to entertain guests as the sun sets over the Arabian Gulf.

Immaculate Mediterranean gardens surround the residences, providing exclusive and private spaces to take a stroll and unwind. The gardens flow around the building and meet at a luxurious deck suspended over the sea.

A SWIM WITH A VIEW

Unwind as you listen to the waves lapping the shore by our Beach Edge Pool. Your own concierge team are on hand to attend to your every need.





SPACE TO LOUNGE

The 50-metre long Horizon Pool is surrounded by a spacious lounge. Its spectacular elevated location is the perfect place for a pre-dinner sundowner.

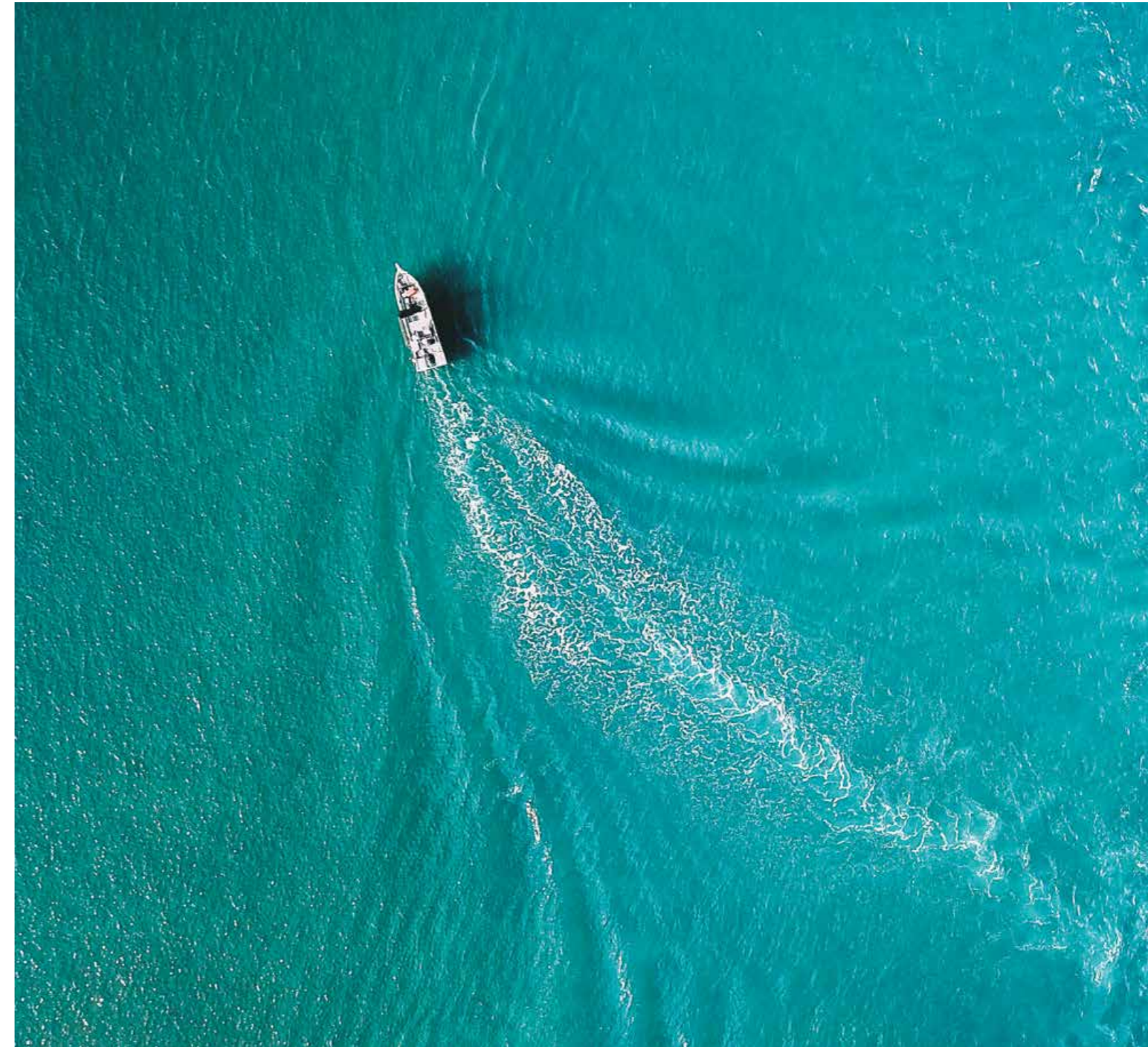
Residents can recline and unwind in true tranquility by indulging in one of the private cabanas.





A TASTE OF THE MEDITERRANEAN

The Bulgari Yacht Club is inspired by the warmth and charm of the Mediterranean. Residents can take advantage of a 46-boat harbour, Italian restaurant, member's lounge, outdoor pool and bar and kid's club.



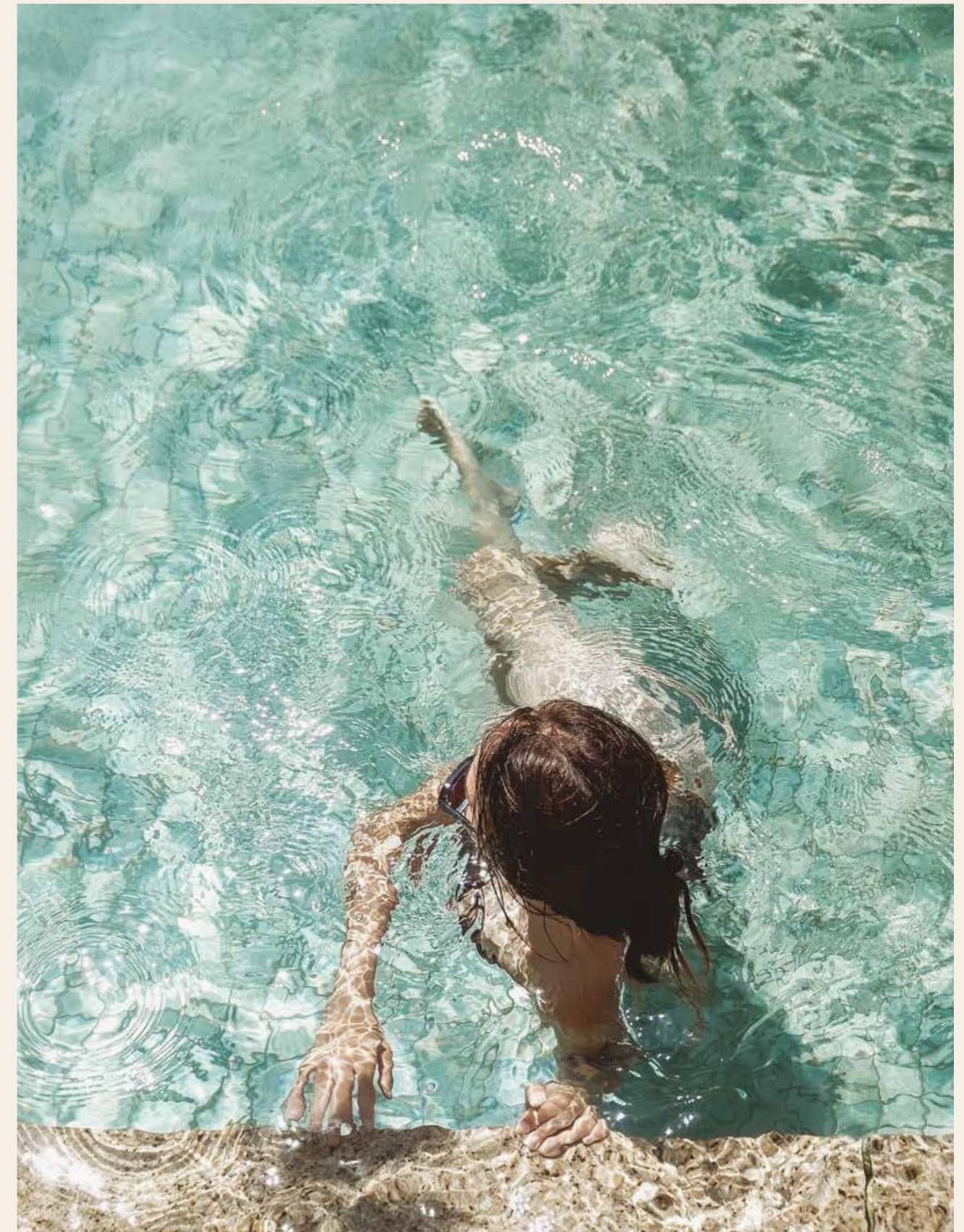


VI
PENTHOUSES

ELEVATED LIVING

Consisting of 4 and 5-bedroom penthouses, the Bulgari Lighthouse offers a selection of diverse living spaces and interior layouts. As the penthouses increase in size and scale, additional features include a private pool and private lift access.

The tower stretches and lightens as it extends higher into the sky with the distance between the architectural coral plates broadening to allow space for larger interior living areas.

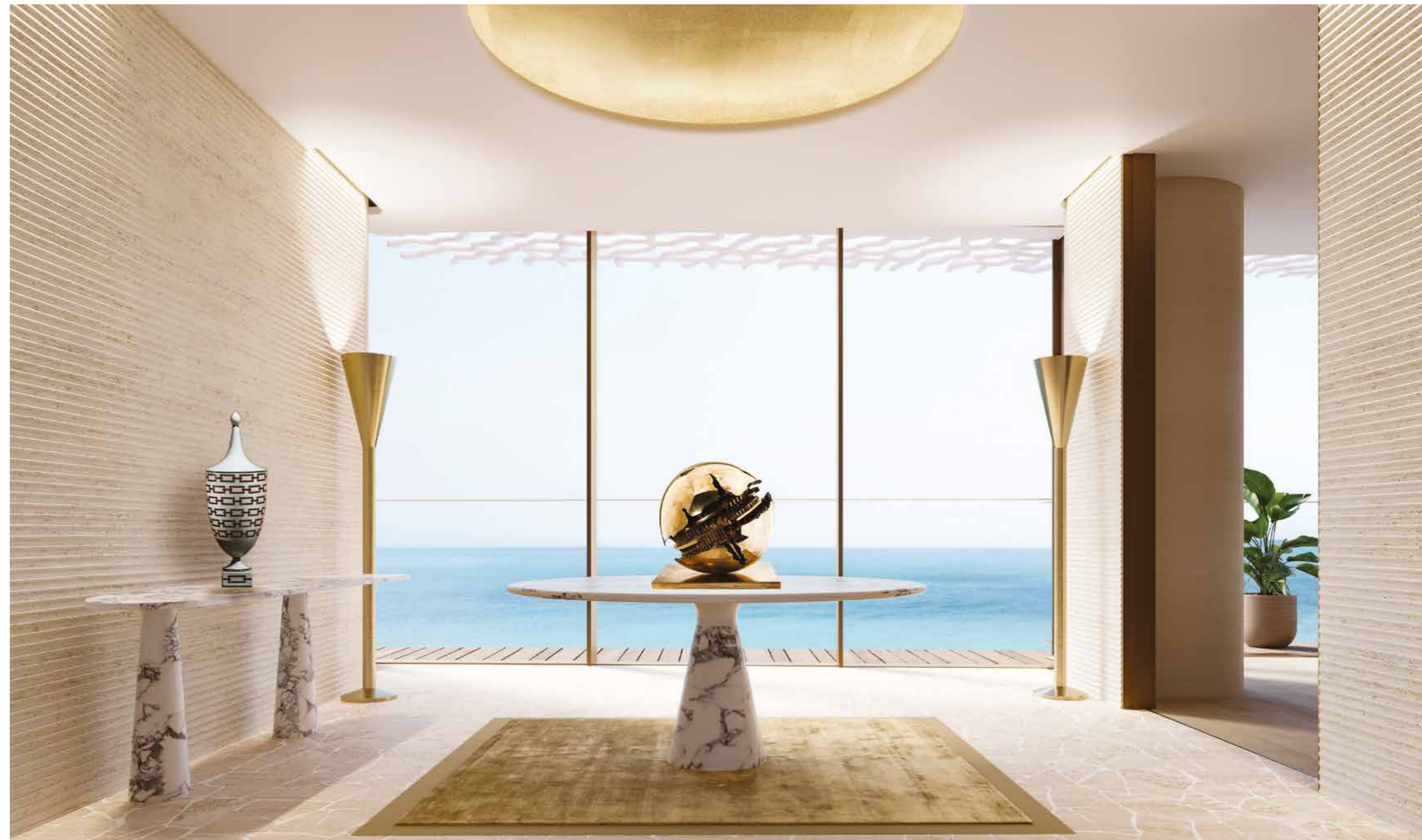


4-BEDROOM PENTHOUSE

A sense of spaciousness is central to the design of the tower. On the lower floors, 4-bedroom penthouses offer exquisite views of the sea or over the marina with the city in the distance. Designed to seamlessly connect the inner and outer spaces, the exterior design wraps around and brings together the central interior spaces including the four en suite bedrooms.

A private elevator opens out into a large oak finished lobby which provides access to spacious living spaces that flow seamlessly out onto connecting exterior decks. Full height glass doors in bronze finished frames lead from the lobby into the formal living spaces.

4-BEDROOM PENTHOUSE LOBBY



The living area is wrapped in a glass façade, which curves gently to embrace the interior spaces, and showcases uninterrupted views of the sea and city. It embraces this concept further by curving to reflect the angle of the façade. Understated sand tones dominate the exquisite finishes with wide oak flooring and columns clad in fine silk.



THE ELEGANCE OF CURVES

FLOWING INSIDE AND OUT

4-BEDROOM PENTHOUSE DINING ROOM

The curving glass façade and floor-to-ceiling doors create a seamless connection between interior and exterior spaces, inviting residents to dine in or out. The show kitchen features a stone floor surrounded by oak boiserie panels which hide away service spaces and the wet kitchen. The centrepiece of the show kitchen is an imposing island clad in precious marble. The space can be adapted to a variety of social occasions, from private family meals to large gatherings with friends.





4-BEDROOM PENTHOUSE KITCHEN

The master suite enjoys a secluded position on the adjacent corner of the penthouse in relation to the living space. It offers wondrous sunset views and has access to a large balcony with a private jacuzzi. Bedroom interiors offer comfort and understated luxury, featuring natural leather finishes, silk wallpaper and oak wood floors.

4-BEDROOM PENTHOUSE MASTER BEDROOM

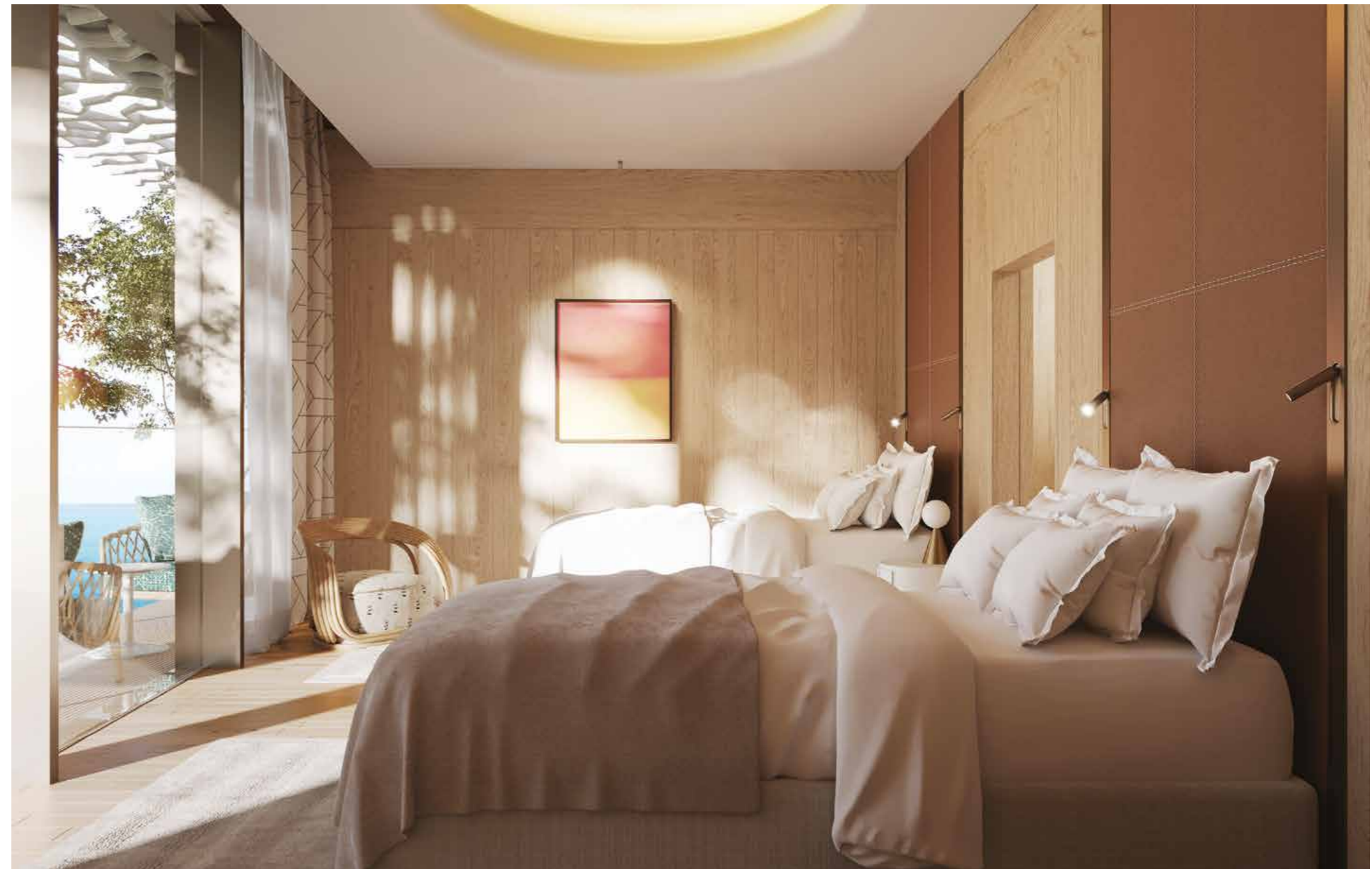


4-BEDROOM PENTHOUSE MASTER BATH

A SECLUDED
SANCTUARY

UNDERSTATED ELEGANCE

4-BEDROOM PENTHOUSE SECONDARY BATH



4-BEDROOM PENTHOUSE SECONDARY BEDROOM

The bedrooms are defined by a subtle elegance with natural materials such as oak flooring and oak wall panelling. Bedrooms feature en suite bathrooms and walk-in closet spaces with access to the expansive balcony which surrounds the living spaces and offers striking views.

4-BEDROOM PENTHOUSE - TYPE A - FLOOR PLAN



Suite Areas (A)	Balcony Areas (B)	NSA (A + B)
4973.03 ft ²	1502.10 ft ²	6475.14 ft ²
462.01 m ²	139.55 m ²	601.56 m ²



4-BEDROOM PENTHOUSE - TYPE B - FLOOR PLAN



Suite Areas (A)	Balcony Areas (B)	NSA (A + B)
4936.76 ft ²	1502.32 ft ²	6439.08 ft ²
458.64 m ²	139.57 m ²	598.21 m ²



5-BEDROOM PENTHOUSE

The 5-bedroom penthouses are accessible by private elevators and feature dramatic double-height living spaces, which open out onto expansive balconies with a private pool, a master bedroom suite, four king rooms and family spaces, all discretely connected by extensive service areas.

The entrance lobby takes advantage of breathtaking city and sea views through full height glazing. A natural meeting point in the home, it sits between the main living spaces and the more intimate private family spaces.

5-BEDROOM PENTHOUSE LOBBY



A double-height living room is complemented by an extensive outdoor living area with spectacular views over the Bulgari Resort and beyond to the iconic Dubai skyline. The living spaces overlook a private infinity pool clad in stone slabs with water flowing over its sides, giving the illusion of disappearing into the balcony floor.



SPACE
TO
BREATHE

5-BEDROOM PENTHOUSE LIVING ROOM



5-BEDROOM PENTHOUSE FAMILY LIVING ROOM

DINNER WITH A VIEW

5-BEDROOM PENTHOUSE DINING ROOM





5-BEDROOM PENTHOUSE KITCHEN

The master bedroom is positioned on the west facing corner of the building where it enjoys stunning views towards the Burj Al Arab and the evening sunset. Residents benefit from additional facilities such as an office, small gym, bathroom, walk-in closet and private spa within their homes. Bedroom interiors balance understated luxury with sublime comfort, using natural leather finishes, oak wood floors and silk wallpaper. En suite bathrooms are equally spacious and luxurious in design, marrying bold Italian marble with travertine wall panels and textured glass.

5-BEDROOM PENTHOUSE MASTER BEDROOM



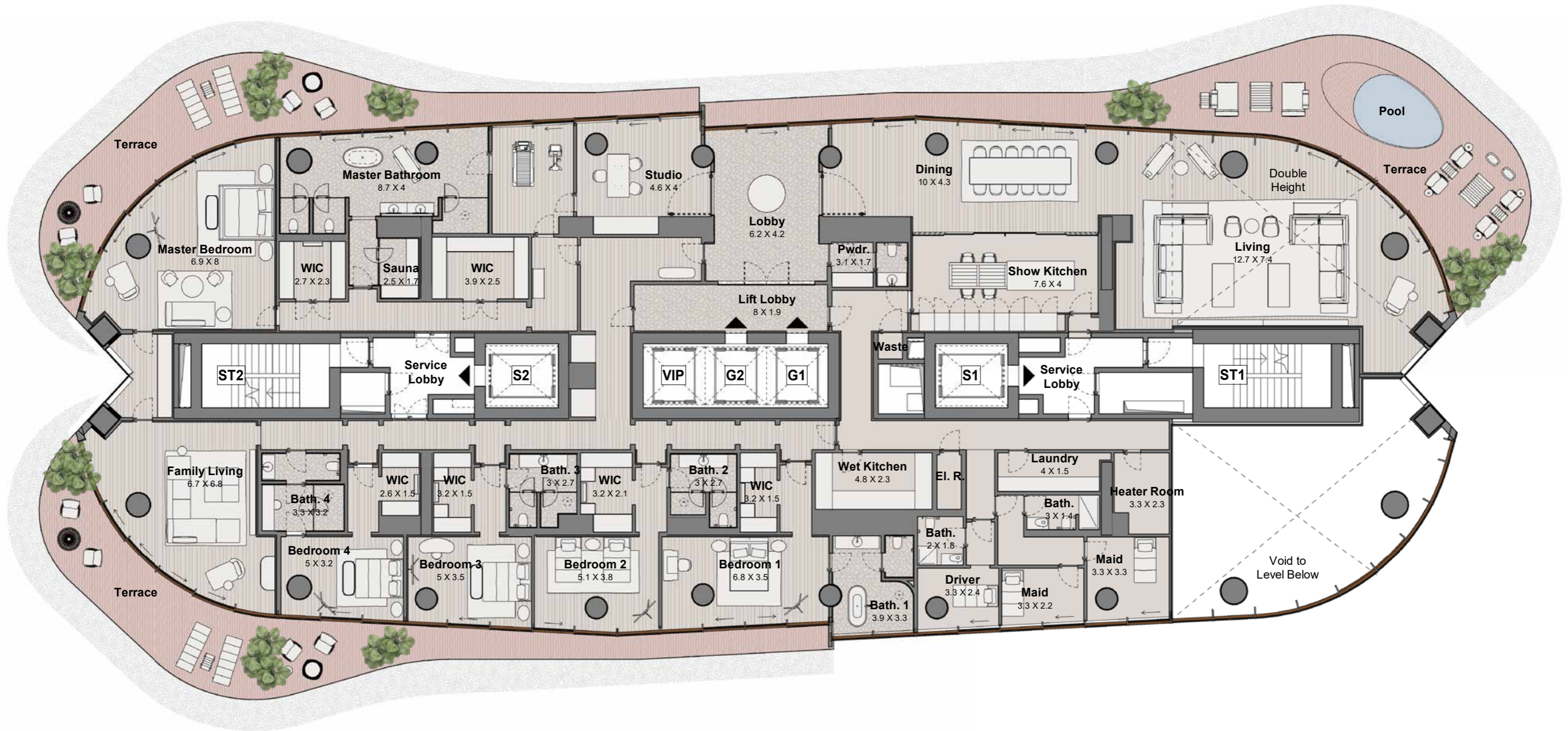
5-BEDROOM PENTHOUSE MASTER BATH

A SUNSET
VIEW



5-BEDROOM PENTHOUSE MASTER BATH

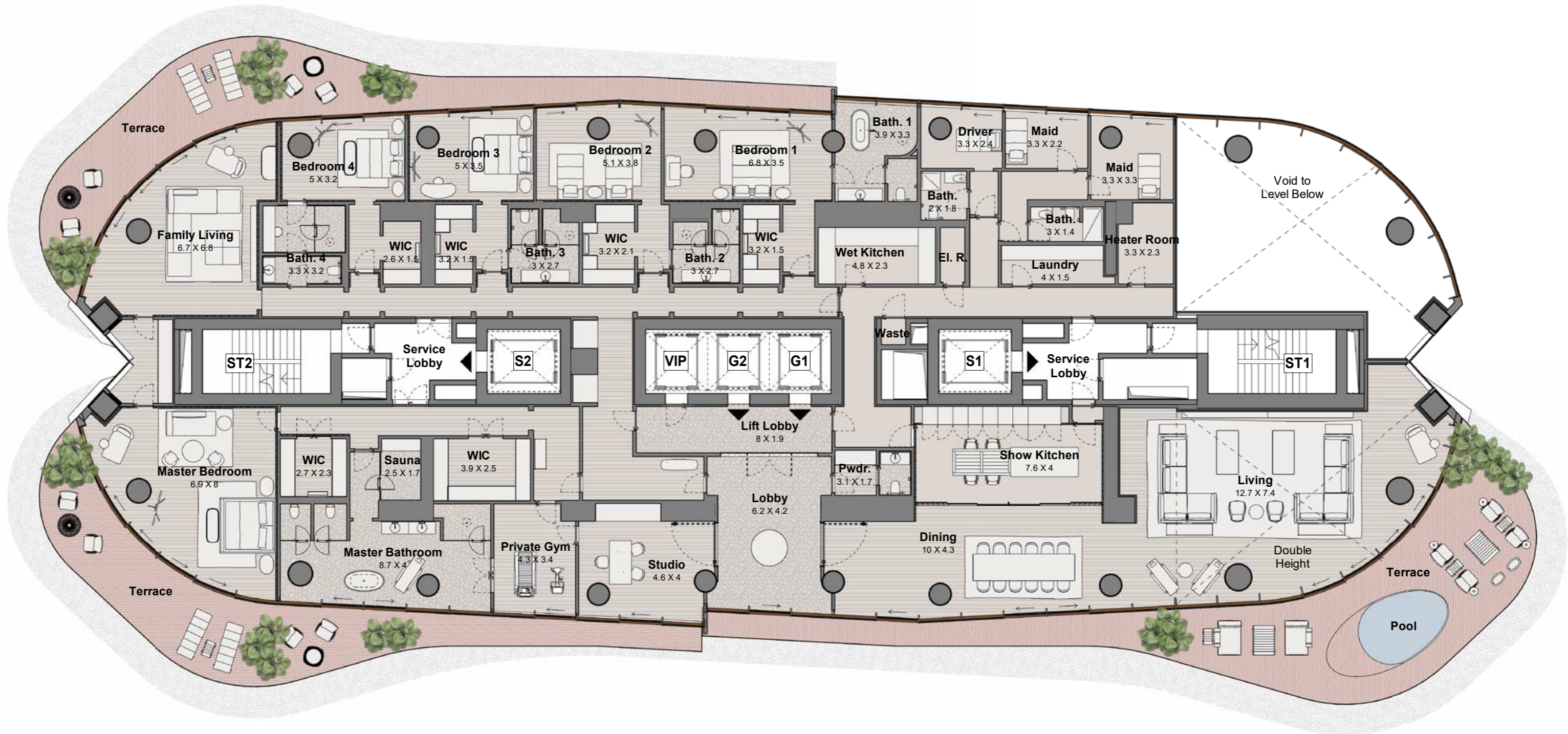
5-BEDROOM PENTHOUSE - TYPE A - FLOOR PLAN



Suite Areas (A)	Balcony Areas (B)	NSA (A + B)
9086.46 ft ²	2570.31 ft ²	11656.78 ft ²
844.16 m ²	238.79 m ²	1082.95 m ²



5-BEDROOM PENTHOUSE - TYPE B - FLOOR PLAN



Suite Areas (A)	Balcony Areas (B)	NSA (A + B)
9088.29 ft ²	2566.22 ft ²	11654.52 ft ²
844.33 m ²	238.41 m ²	1082.74 m ²



AN EXCLUSIVE COMMUNITY

IL BAR



FITNESS CENTRE

Community spaces are conveniently placed at ground level and protected by the extending coral plate above the surface of the garden. This covered space contains a reception with concierge, relaxing lounge area, state-of-the-art gym, and play facilities for younger children. Interior spaces open out onto the beautiful Mediterranean gardens.



YOUR ARCHITECTS

ANTONIO CITTERIO

Design by renowned architectural firm Antonio Citterio Patricia Viel, the building embodies Italian contemporary design while taking inspiration from the natural world and the beautiful surrounding landscape. Its elevated position and stunning views have inspired the building's iconic design, which embraces contrast between sea and city, and sky and earth. Coral is integral to the design principles as both a practical and metaphorical inspiration, providing protection, privacy, and peace. Light and shade also have an important part to play, with internal and external details designed to be illuminated by the soft natural light that evolves from sunrise to sunset.



YOUR ARCHITECTS

PATRICIA VIEL

Patricia Viel is a French architect. Graduated in architecture from Politecnico di Milano in 1987, she started her collaboration with Antonio Citterio in 1986. In 2000, she joined Antonio Citterio and Partners interior design and architecture practice with architect Antonio Citterio—heading architecture design, with a focus on the integration of architecture within the urban landscape. As CEO, Patricia Viel has been in charge of architecture and interior design projects, while being actively involved in the management of the company—now named ACPV ARCHITECTS Antonio Citterio Patricia Viel. The practice operates internationally, developing complex projects ranging from all scales of intervention, in synergy with a qualified network of specialist consultants. From 2005 to 2012, Patricia Viel was a member of the Board of Advisors of the Istituto Nazionale di Architettura In/Arch, in Milan. In addition to her work at the firm, she takes part in international panels and conferences as a speaker. In 2021, ACPV produced “The Importance of Being an Architect”, a documentary film conceived as a virtual dialogue and musical journey in four acts, which investigates the responsibility of architects in building the society of tomorrow. The film has been featured in several festivals worldwide and on Sky Arte TV channel.



DISCLAIMER Confidentiality and disclosure of information: All of the data, images, plans and information in this document are confidential and no part may be reproduced, distributed, disclosed or communicated to any other third party without our prior written approval. It may only be used for the purposes of determining whether to purchase property as described in this document. No representation and no liability: We make no representation or warranty, express or implied that this document or the data, imaged, plans and information contained herein or the assumptions on which they are based are accurate, complete or up to date and they should not be relied upon as such. Any plans, photos, and computer generated images shown are indicative only and cannot be guaranteed to represent the complete interiors/exterior of a scheme. Any areas, measurements or distances given are approximate only. Any products and materials shown or indicated are indicative only and may be subject to variations or change. It is not possible to scale from any drawings and any reference to alterations to or use of any part of the property is not a statement that any necessary planning, building regulations or other consent has been obtained. These matters must be verified by any buyer/lessee. Any buyer/lessee must satisfy themselves by inspection or otherwise as to the correctness of any information given. Further design development is anticipated and the photograph's artist's impression(s), computer generated images and any description of detail or specification are intended as guidance only and may alter as works progress We accept no liability for any direct, indirect or consequential loss or damage suffered by any person as a result of relying on all or any part of this document and any liability is expressly disclaimed nor do we accept any liability if this document and the information contained herein is used for an alternative purpose from which it is intended, nor to any third party. Indicative terms only; no recommendation: This document contains only preliminary project information and images for illustrative purposes only. It does not purport to and is not intended to contain all of the information that may be required to evaluate and be relied on in connection with any potential purchase of property or considered as a recommendation by any person for you to participate in any potential transaction. We do not undertake, or expect, to update, correct or otherwise revise this document and the information contained herein at any time. Any proposed terms in this document are indicative only and remain subject to contract on such terms as directed by us.

No offer: This document is not intended to create legal relations between us and is not an offer or commitment with respect to the sale of property and creates no obligation or liability on us to arrange or sell any property to you and all discussions relating thereto remain strictly subject to contract. Licensed Trademark: The scheme and no part of the scheme is owned, developed or sold by the Bulgari/Marriott parties ** nor will any part of the scheme be owned or managed by the Bulgari/Marriott parties**. The Bulgari/Marriott parties **have not confirmed or checked the accuracy of the any of the information provided by Meraas* or by its independent agents or any of its agents, employees or advisers and the Bulgari/ Marriott parties **assume no responsibility for such information. The Bulgari/Marriott parties** do not act as agents for Meraas *nor do they act as broker, finder or agent in connection with the sale of the scheme. No buyer or purchaser of any part of the scheme shall have the right to use or have any interest in the BVLGARI brand or name ("the Licensed Mark") and the use thereof will be strictly controlled by the terms of any sale and purchase agreement to be entered into by any buyer or purchaser of any part of the scheme and any such buyer or purchaser unconditionally waives and releases the Bulgari/ Marriott parties** in respect of any representation, defects, use of deposits or any claim whatsoever relating to the marketing, sale, design or construction or completion of any part of the scheme. The Bulgari/ Marriott parties** have no involvement in the provision of any hotel services to any part of the scheme and the buyer or purchaser of any part of the scheme should be aware that the license agreement permitting the use of the Licensed Mark may be terminated at any time in accordance with the terms of the licenses and agreements entered into between Meraas * and the Bulgari /Marriott parties** and the purchaser acknowledges and agrees that it shall have no recourse against the Bulgari/Marriott parties** in the event that the use of the Licensed Mark ceases or terminates. * MERAAS BAY AND RESIDENCES LLC, is a company organized and existing under the laws of Dubai, United Arab Emirates, with its registered office at P.O. Box 123311, Dubai, United Arab Emirates and is the owner and developer of the scheme. ** Bulgari S.p.A. or Marriott International, Inc. or any of its affiliates referred to herein as the "Bulgari/Marriott parties.

