



منازل

DUBAI

CHRISTIE'S  
INTERNATIONAL REAL ESTATE

— DUBAI —



BY R.EVOLUTION

# DEVELOPER

## Ready to Embrace the Extraordinary?

Welcome to the developer and creative force behind Eywa, R.evolution. Since 1999, we've been dreaming the impossible into being – and winning awards while doing so.

Having already developed more than 2,500,000 sqft GFA of prime real estate in Latvia, Germany and Spain, Eywa introduces our signature style to Dubai.

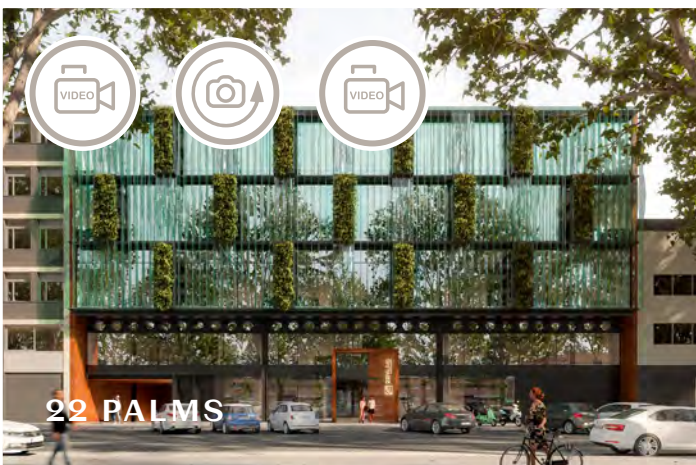
## R.EVOLUTION

REAL ESTATE DEVELOPMENT

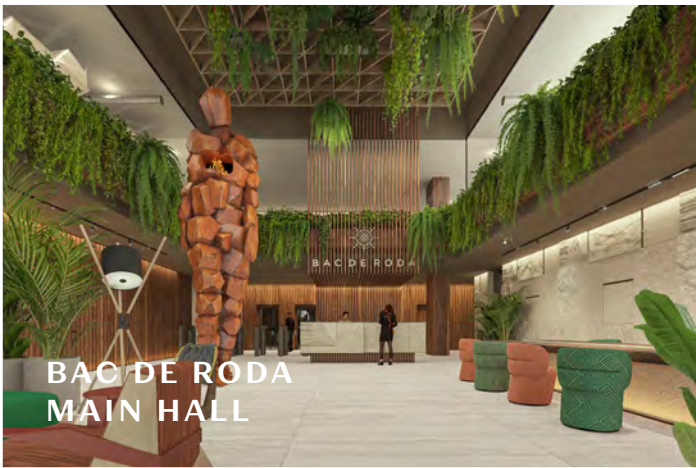
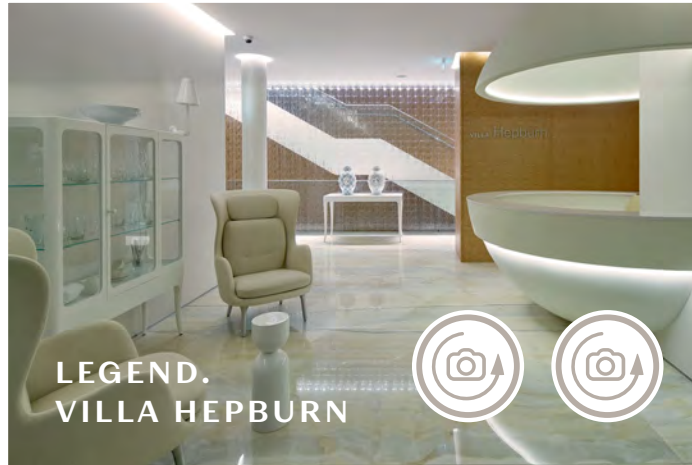
### International Award Winners



# BY R.EVOLUTION



# BY R.EVOLUTION



# OUR PARTNERS

Design Consultants

OPEN AD  
architecture  
bureau



Cost Consultants



Exclusive Sales Agency

CHRISTIE'S  
INTERNATIONAL REAL ESTATE  
— DUBAI —

Capital Advisor



Financing bank in UAE



LDC / Supervision Consultants



Marketing & Branding



Vastu-Shastras Consultants



Interior Design Consultants



Legal Adviser

التميمي و شركاه  
ALTAMIMI & CO.

PR Agency



ENERGY  
YOU  
WELLBEING  
ANCIENT KNOWLEDGE

المنارة  
DUBAI



# “WILD LUXURY” BY R.EVOLUTION: A UNIQUE LIFE EXPERIENCE

An experience designed for those who seek originality. Who shun conformity. Who yearn for positivity, purity and well-being. If this resonates with you, then it's time to embrace “Wild Luxury”. It's time to put down roots.

## Key Points

- **G+19 - 48 Luxury Apartments**
- **Mix of 2, 3, 4, and 5-bedroom apartments and 2 penthouses**
- **Built on the principles of Vastu**

Plot number

3460542

Land Plot Area (sqm)

3,464 sq.m. / 37,284 sq.ft.

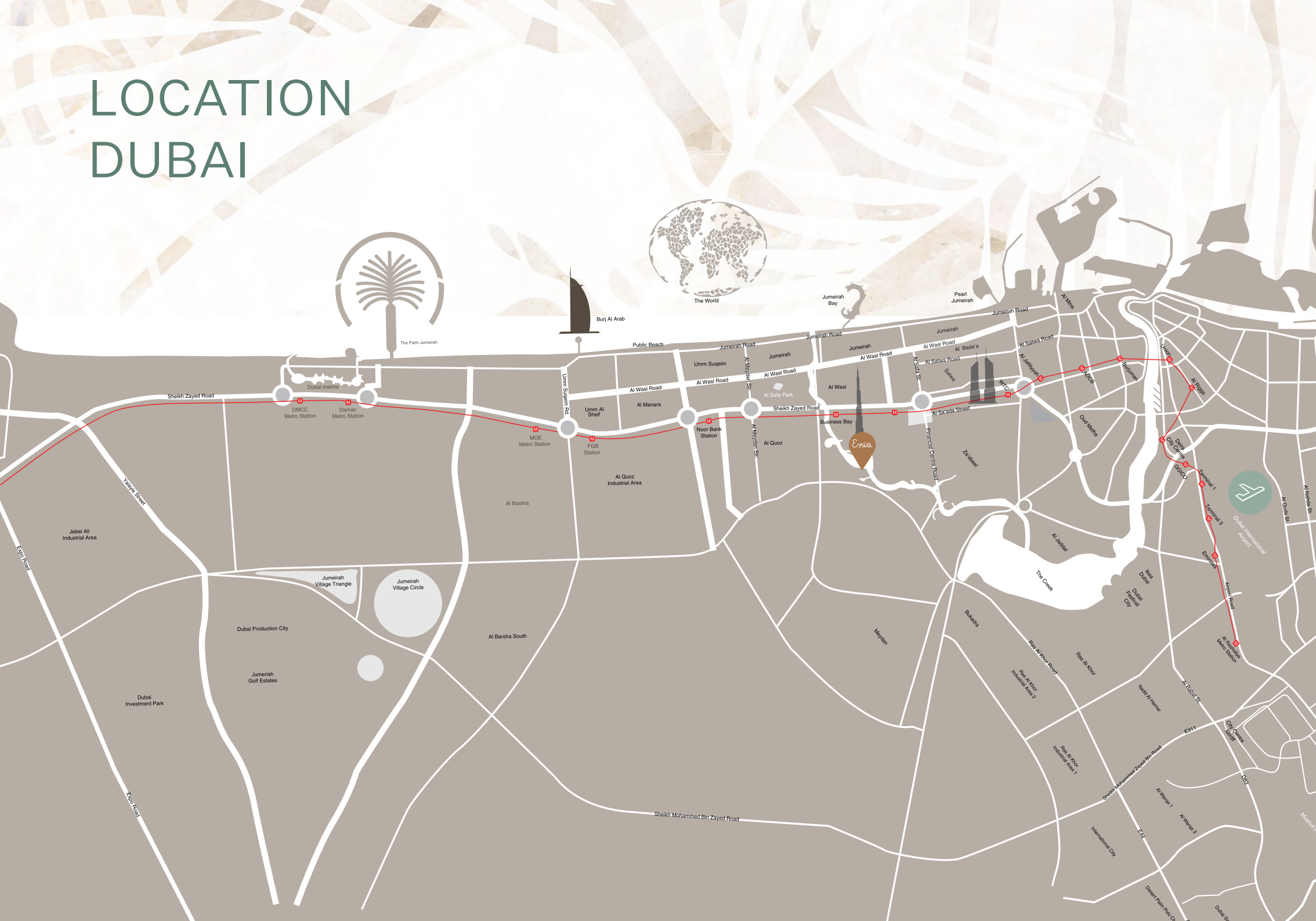
عوازل

DUBAI





# LOCATION DUBAI



# BUSINESS BAY

## 10-15 Minutes



The Dubai Mall



Burj Khalifa



Dubai Opera



The Dubai Fountain



DIFC

## 25 - 35 Minutes



Dubai Marina



Jumeira Beach



Burj Al Arab



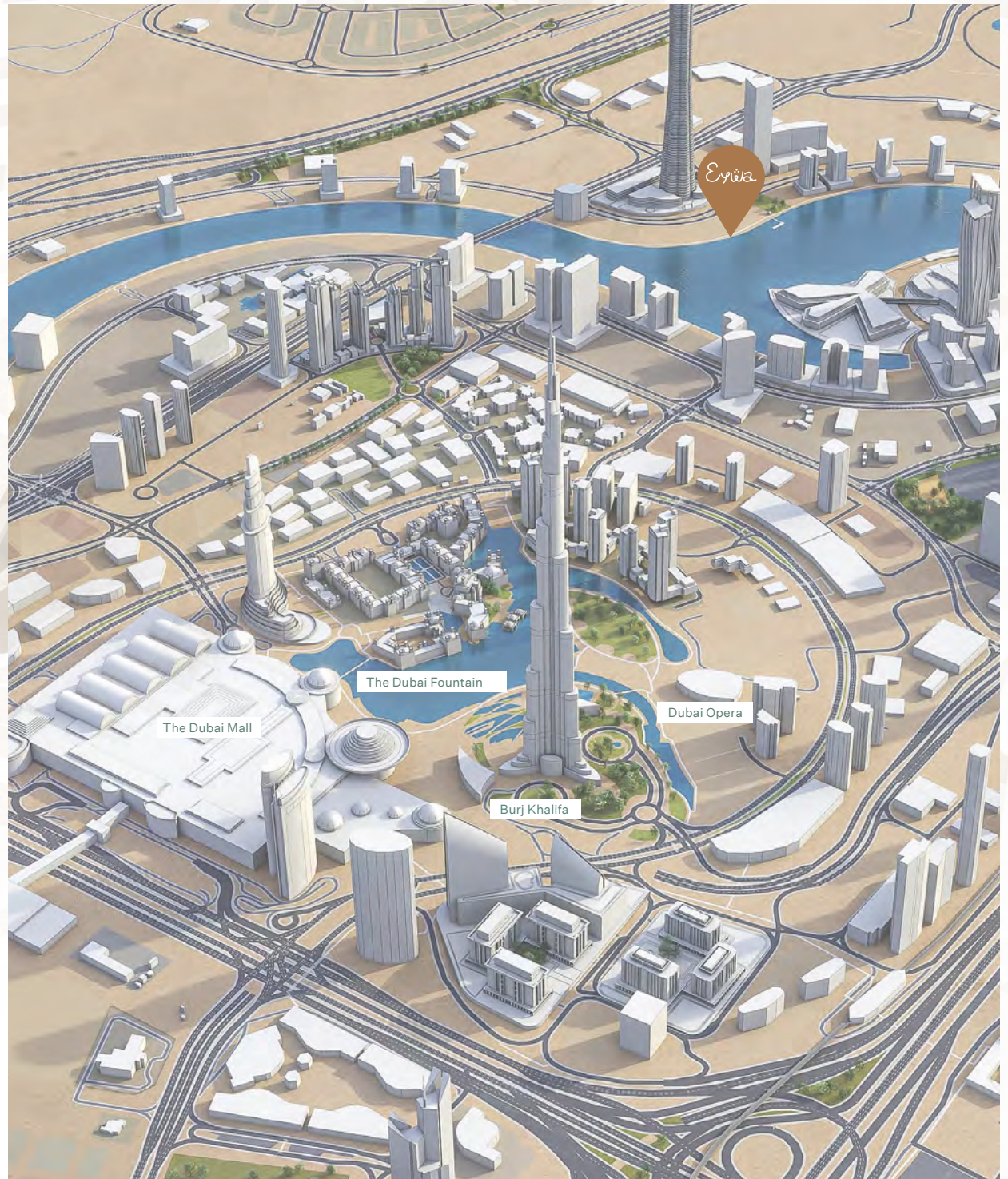
Dubai International Airport



Palm Jumeira



Mall of the Emirates



Our Priorities are well-being and health, energy efficiency and sustainability, unity with nature and community.



- Leed Platinum Certification
- Well Platinum Certification
- Wiredscore Platinum Certification
- HealthProTech System
- Use of the ancient knowledge of Vāstu-Śāstras to enhance the well-being of residents
- Prime location
- Intellectual Development design approach
- State-of-art technologies

عقار  
DUBAI





Strikingly unique from your very first glimpse, Eywa instantly evokes a glorious Tree of Life. An organic canopy of branches, an enticing weave of roots, a floating oasis and a living breathing building that represents timeless wisdom and enduring growth.

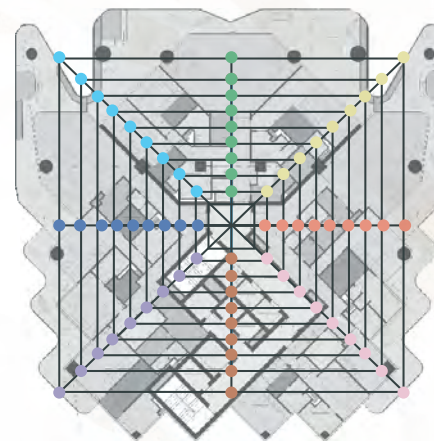
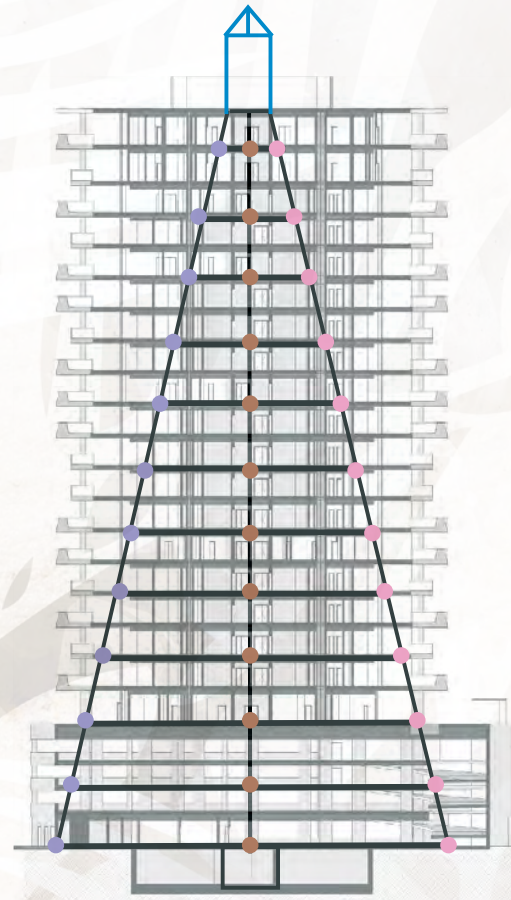


عشيرة  
DUBAI

# EYWA IS A BREATHING ORGANISM – INTERACTING AT ALL LEVELS AND THROUGH ALL SENSES

Eywa is a beautiful kinship between ancient science and wisdom, modern technology and world-class architecture.

Eywa combines the venerable design principles of Vastu Shastra with the latest technologies to harmonise the building's energies, and create an environment that supports your well-being and shapes a promise for modern life.



## Location Of Stones

-  **The North-West** - selenite
-  **The North** - green jade, malachite, green quartz
-  **The North-East** - yellow amber, yellow tourmaline
-  **The West** - black agate, black onyx, labrador, lapis lazuli
-  **The South** - red agate, red jasper, cornelian
-  **The East** - red tourmaline, red quartz, red amber
-  **The South-East** - rock crystal, rose quartz, white quartz
-  **The South-West** - amethyst
-  **The central part is left free for the flow of divine energy.**

# Special Approach & Application Senses in Eywa

## Taste

Pleasant surprises for residents, such as specially selected exclusive kinds of coffee, and some treats made from natural ingredients, in the Club House and the Main Hall. The Chef's Table at the restaurant at Eywa's Apartment, where you can pre-order your favorite dishes prepared to your taste and with ingredients purchased from your list.

## Smell

The air in public places is saturated with the aroma of the Bali jungles (ylang-ylang, jasmine, champak) - a special fragrance created specifically for Eywa on the basis of essential oils. Blooming throughout the year trees and shrubs fill the air with a delicate aroma.

## Touch

Natural rough surfaces both in interior design and in architecture, including crystals, are recommended not only to admire but also to touch.

## Hearing

High-End acoustic systems capable of transmitting vibrations with a frequency of 432 Hz, which enhances the regeneration and soothes the body, are in the Club House, SPA, the Main Hall, and Gym.

Spatial High-End 3D, 360° audio in the Main Hall helps a person to be in the here and now as the most important moment of his life. The music is chosen to harmonize energy and life in Eywa.

## Light

The specially selected soft yellow light color can be adjusted depending on the scenario, and no aggressive direct light, only hidden light sources in public areas.

Subdued base light intensity from reflected or hidden sources, both facade decorative elements and trees illumination work as reflected light sources, outdoor fireplaces, and an open-air cinema.

## Equilibrium

Flying art objects in the atrium of the Main Hall, flying trees on the facade, waterfalls - on the facade and in some apartments, flying dining areas on the terraces in the apartments with stunning views.



## Aromas of Nature

Specially selected year-round flowering shrubs and trees are planted on the territory and placed on private terraces and in public spaces to fill the air with a subtle and exquisite aroma of nature.

## All 5 elements of nature

**- Stone, Fire, Tree, Water & Air,**

help to create a healthy holistic environment for a successful person.

### Air

Eywa has saturated with air thanks to its 7.5-meter ceilings in the main hall, 4.4-meter ceilings in the restaurant and other facilities and 3.4-meter ceilings in the apartments, special air purification filters; specially selected aromas of natural oils sprayed in public places; air conditioning

### Water

Stunning waterfall at the entrance and in some apartments, 4 swimming pools on the first-floor terrace, a 2 x 3 m swimming pool in each apartment, water structuring filters with crystals

### Fire

Open fire in the main hall, and a totem place for tribal gatherings by an open fire on the first-floor terrace of - 1400-1500 sqm, in the restaurant and in the Club House.

### Tree

The building - a Banyan tree. Flying trees and flourishing gardens in each apartment. A plethora of green plants and trees in the public areas inside and outside.

### Stone

Floors, natural stone wall cladding inside and outside, a 105 m high energy pyramid of crystals throughout the building, special stones and crystal gardens in public areas, and a floating Japanese stone garden.

# INSIDE EYWA

From a chef's table and library to private waterfalls and hammocks, Eywa is packed with ideas, features and moments that are vibrantly different.

Most importantly of all, each and every one of these extraordinary life experiences is deliberately intended to augment your well-being, and touch your heart and senses – every day.

عشيرة  
DUBAI





### Private Waterfalls, Pools and Gardens

- Being at one with nature.  
Living in the 'here and now'.



### 'Apartment ONE Eywa': the Dedicated Residents' Community Space

- Throughout Eywa we've designed areas devoted to shared spaces and facilities.



### Health and Well-being Facilities

- Eywa stretches and supports you – mind, body and spirit.



**SPA** - Our state-of-the-art Wellness Spa features cold plunge pools, saunas, a hammam bath and more.



### Club House Dining

- Quite simply, this is a dining experience unlike any other.



### Cinemas - Movies.

They fire the imagination and escapism.



**Library** - Step between the trunks of our tree, and you'll discover how Eywa celebrates, shares and nurtures knowledge.



**Flying Trees** - Our vision is for Eywa to be a living organism, at one with nature and with its surroundings.



**Playgrounds** - Our playroom will entertain and inspire with toys and games for children of all ages.



**Offices & Workspaces** - Eywa features two office-conference rooms, that also function as private dining areas.



**Parking** - We don't just provide four levels of parking, we've also designed them as an extension of your home

### Car Parking Allocations

- 2 bed - 2 parking
- 3 bed (up to level 10) - 2 parking
- 3 bed (higher floors) - 3 parking
- 4 bed - 3 parking
- 5 bed - 4 parking

# EYWA AMENITIES

## Ground Floor:

- Private drop off with valet
- Outdoor lounge seating
- Outdoor waterfall
- Grand wood entry door
- Natural stones and decorative plasterwork
- Welcoming double volume reception
- Cozy and diverse seating areas and typologies, including a lounge in the treehouse.
- Diverse collection of thoughtfully curated books
- Private service and deliveries entrance and elevator
- 24/7 concierge service only for our residents
- A 5G network inside the building

## Parking:

- Ground and podium levels
- Drivers lounge
- Valet carts
- Open for natural ventilation to hanging gardens and views
- With seating areas, lounges and quality lighting and finishes to accent the vehicles within
- EV charging stations
- Bicycle parking, bike pump and maintenance stand

## Amenities Floor

- A 25m infinity-pool and children's pool
- A crystal garden
- Pool deck with private loungers
- Sunken built in seating
- Secret view captivating built-in lounge
- Outdoor bar
- Change rooms
- A clubhouse featuring a private chef with open chefs kitchen and fully fitted catering kitchen, private dining, work and function/conference rooms and a library and music lounge.  
Very multifunctional and adaptable to personal events.
- Spa with massage and treatment rooms, Hammam, Sauna, Experience Showers, Cold Plunge, Relaxation Lounge
- Salon - Hairdresser and mani/pedi station
- Fitness club and Yoga studio with luxury equipment from a sustainable and leading manufacturer, outdoor gym
- Open-air and indoor cinema
- A children's club with Montessori and STEAM led design and resources
- Outdoor playground "Kids workshop"

## Units:

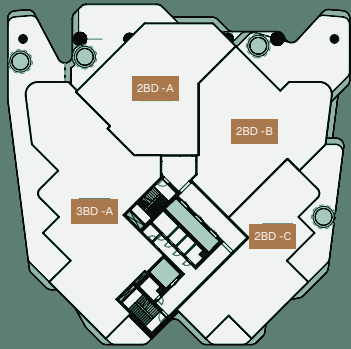
- 2,3,4 and 5 bed residential apartments (46 in total)
- Signature live edge wood unit entry door
- A soaring dining area with hammocks on the private terraces
- Private waterfalls and pools
- Focus on natural daylight and views
- Natural stone floors in living spaces and engineered wood flooring in bedrooms
- Fully customized sustainably produced kitchen joinery
- Signature stone Kitchen Countertops
- European Kitchen Appliances with high energy rating
- European Sanitaryware - bathtubs, walk-in showers, ample storage, signature stone accents
- Generous storage and service spaces
- Warm and Bright color tones throughout

# PAYMENT PLAN

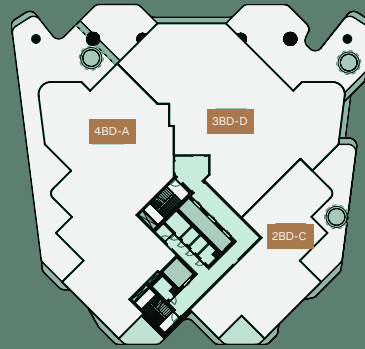


# UNITS MIX

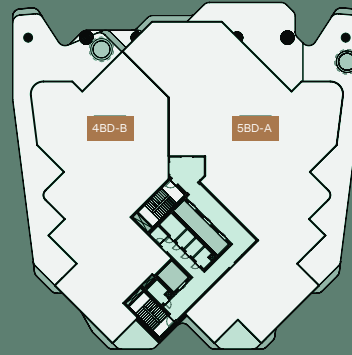
Floorplate levels  
2&3



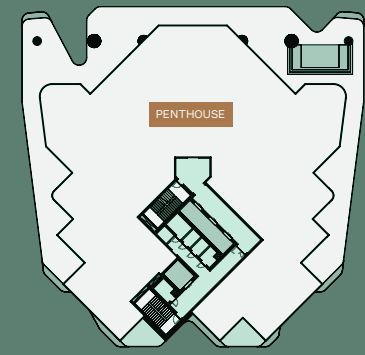
Floorplate levels  
4, 5, 6, 7, 8



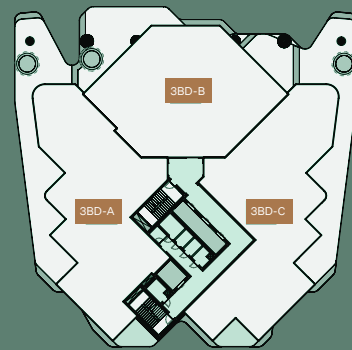
Floorplate levels  
14, 15, 16, 17



Floorplate levels  
18&19



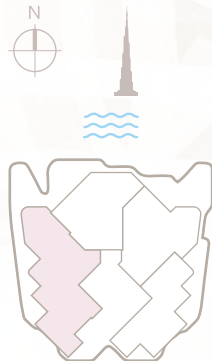
Floorplate levels  
9, 10, 11, 12, 13



# APARTMENT 201

## 3 Bedroom | Type A

Internal area: 346.3 m<sup>2</sup> 3,728 ft<sup>2</sup>  
 Balcony: 134.18 m<sup>2</sup> 1,444 ft<sup>2</sup>  
 Total area: 480.48 m<sup>2</sup> 5,172 ft<sup>2</sup>



DISCLAIMER 1. All dimensions are in imperial and metric, and measured from finish to finish excluding construction tolerances. 2. All materials, dimensions and drawings are approximate only. 3. Information is subject to change without notice, at developer's absolute discretion. 4. Actual area may vary from the stated area. 5. Drawings not to scale. 6. All images used are for illustrative purposes only and do not represent the actual size, features, specifications, fittings and furnishing. 7. The developer reserves, the right to make revisions or alterations, at its absolute discretion, without any liability whatsoever.

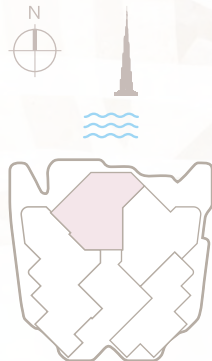
# Eyeza

DUBAI

## APARTMENT 202

2 Bedroom | Type A

Internal area:	228.67 m <sup>2</sup>	2,461 ft <sup>2</sup>
Balcony:	114.41 m <sup>2</sup>	1,232 ft <sup>2</sup>
Total area:	343.08 m <sup>2</sup>	3,693 ft <sup>2</sup>



DISCLAIMER 1. All dimensions are in imperial and metric, and measured from finish to finish excluding construction tolerances. 2. All materials, dimensions and drawings are approximate only. 3. Information is subject to change without notice, at developer's absolute discretion. 4. Actual area may vary from the stated area. 5. Drawings not to scale. 6. All images used are for illustrative purposes only and do not represent the actual size, features, specifications, fittings and furnishing. 7. The developer reserves, the right to make revisions or alterations, at its absolute discretion, without any liability whatsoever.

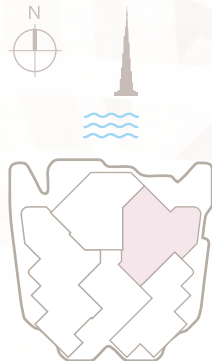
# Eyeza

DUBAI

## APARTMENT 203

2 Bedroom | Type B

Internal area: 247.02 m<sup>2</sup> 2,659 ft<sup>2</sup>  
Balcony: 101.97 m<sup>2</sup> 1,097 ft<sup>2</sup>  
Total area: 348.99 m<sup>2</sup> 3,756 ft<sup>2</sup>



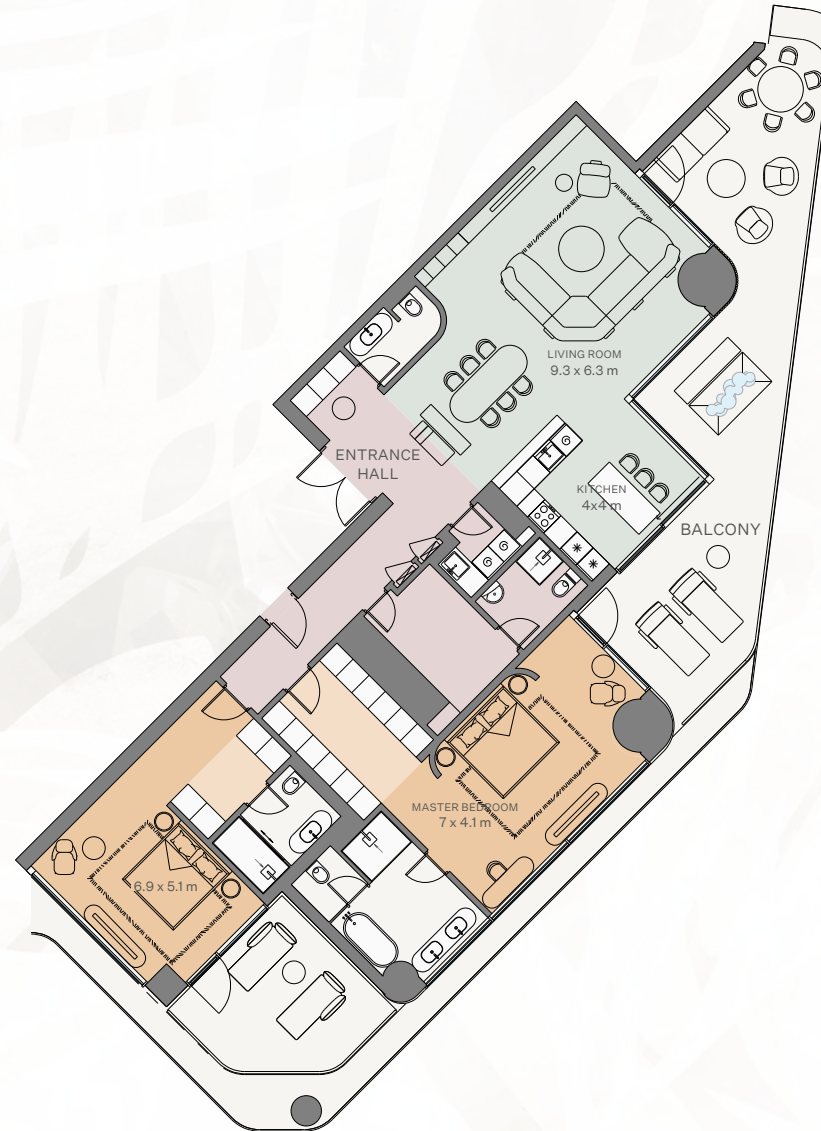
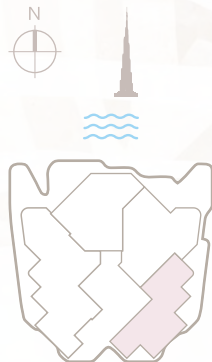
DISCLAIMER 1. All dimensions are in imperial and metric, and measured from finish to finish excluding construction tolerances. 2. All materials, dimensions and drawings are approximate only. 3. Information is subject to change without notice, at developer's absolute discretion. 4. Actual area may vary from the stated area. 5. Drawings not to scale. 6. All images used are for illustrative purposes only and do not represent the actual size, features, specifications, fittings and furnishing. 7. The developer reserves, the right to make revisions or alterations, at its absolute discretion, without any liability whatsoever.



# APARTMENT 204

## 2 Bedroom | Type C

Internal area:	203.41 m <sup>2</sup>	2,189 ft <sup>2</sup>
Balcony:	73.54 m <sup>2</sup>	792 ft <sup>2</sup>
Total area:	276.95 m <sup>2</sup>	2,981 ft <sup>2</sup>



DISCLAIMER 1. All dimensions are in imperial and metric, and measured from finish to finish excluding construction tolerances. 2. All materials, dimensions and drawings are approximate only. 3. Information is subject to change without notice, at developer's absolute discretion. 4. Actual area may vary from the stated area. 5. Drawings not to scale. 6. All images used are for illustrative purposes only and do not represent the actual size, features, specifications, fittings and furnishing. 7. The developer reserves, the right to make revisions or alterations, at it's absolute discretion, without any liability whatsoever.

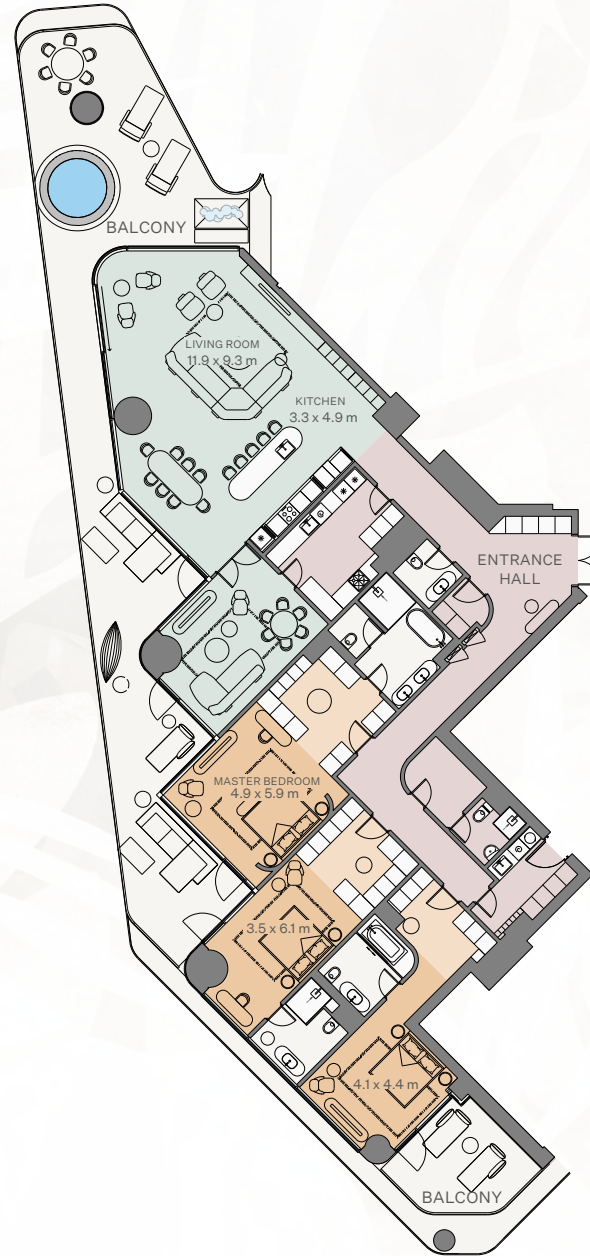
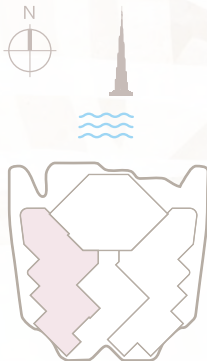
# Eyeza

DUBAI

## APARTMENT 301

3 Bedroom | Type A

Internal area: 346.28 m<sup>2</sup> 3,727 ft<sup>2</sup>  
Balcony: 139.5 m<sup>2</sup> 1,502 ft<sup>2</sup>  
Total area: 485.78 m<sup>2</sup> 5,229 ft<sup>2</sup>



DISCLAIMER 1. All dimensions are in imperial and metric, and measured from finish to finish excluding construction tolerances. 2. All materials, dimensions and drawings are approximate only. 3. Information is subject to change without notice, at developer's absolute discretion. 4. Actual area may vary from the stated area. 5. Drawings not to scale. 6. All images used are for illustrative purposes only and do not represent the actual size, features, specifications, fittings and furnishing. 7. The developer reserves, the right to make revisions or alterations, at its absolute discretion, without any liability whatsoever.

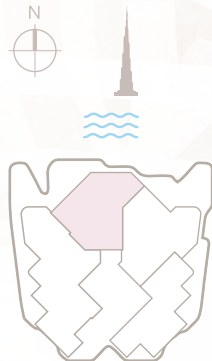
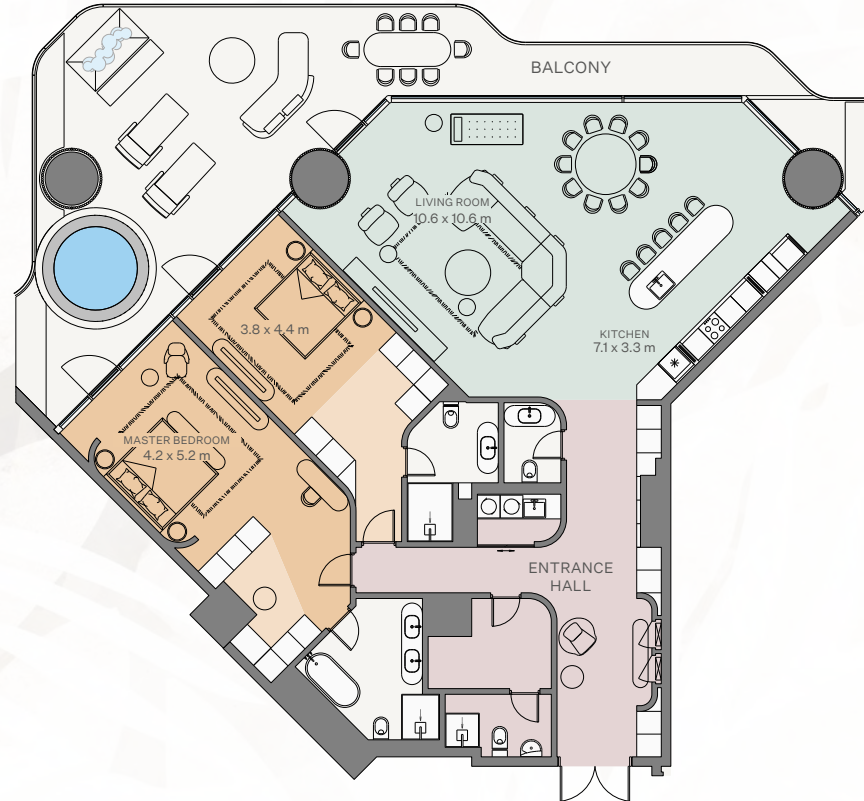
# Eyeza

DUBAI

## APARTMENT 302

2 Bedroom | Type A

Internal area:	228.67 m <sup>2</sup>	2,461 ft <sup>2</sup>
Balcony:	83.12 m <sup>2</sup>	895 ft <sup>2</sup>
Total area:	311.79 m <sup>2</sup>	3,356 ft <sup>2</sup>



DISCLAIMER 1. All dimensions are in imperial and metric, and measured from finish to finish excluding construction tolerances. 2. All materials, dimensions and drawings are approximate only. 3. Information is subject to change without notice, at developer's absolute discretion. 4. Actual area may vary from the stated area. 5. Drawings not to scale. 6. All images used are for illustrative purposes only and do not represent the actual size, features, specifications, fittings and furnishing. 7. The developer reserves, the right to make revisions or alterations, at its absolute discretion, without any liability whatsoever.

BY R.EVOLUTION

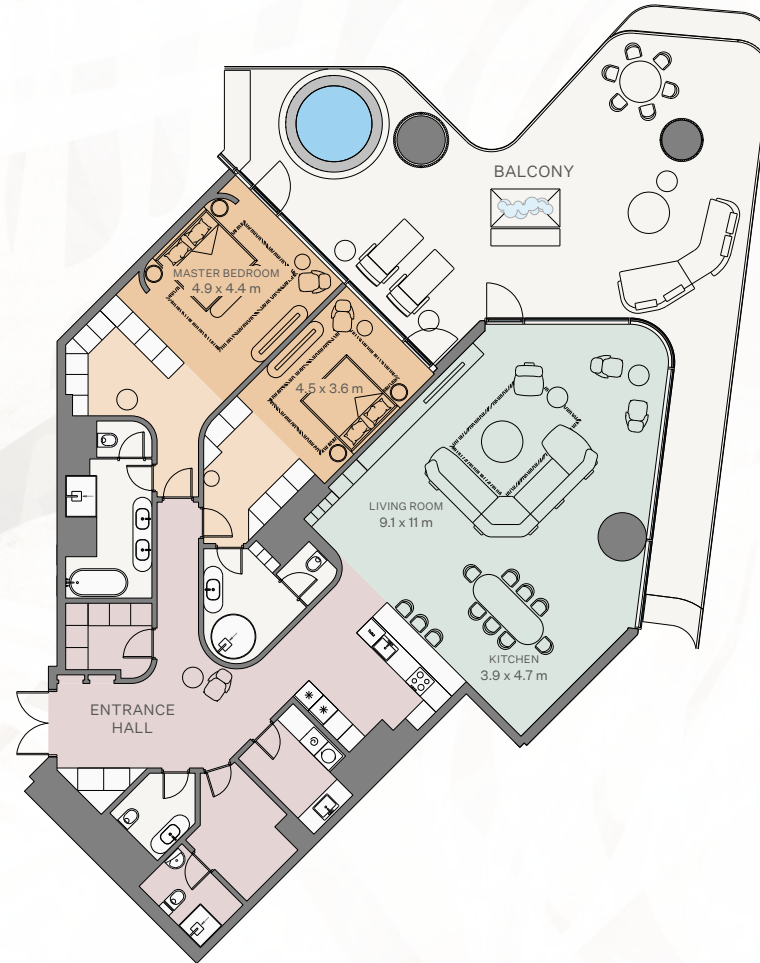
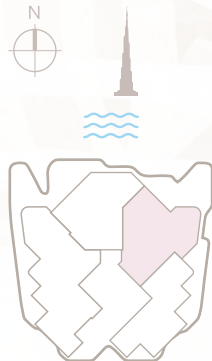
# Eyeza

DUBAI

## APARTMENT 303

2 Bedroom | Type B

Internal area: 247.02 m<sup>2</sup> 2,659 ft<sup>2</sup>  
Balcony: 118.93 m<sup>2</sup> 1,280 ft<sup>2</sup>  
Total area: 365.95 m<sup>2</sup> 3,939 ft<sup>2</sup>

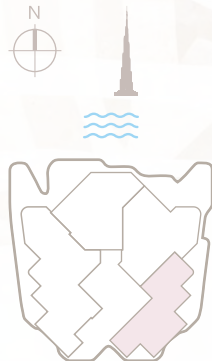


DISCLAIMER 1. All dimensions are in imperial and metric, and measured from finish to finish excluding construction tolerances. 2. All materials, dimensions and drawings are approximate only. 3. Information is subject to change without notice, at developer's absolute discretion. 4. Actual area may vary from the stated area. 5. Drawings not to scale. 6. All images used are for illustrative purposes only and do not represent the actual size, features, specifications, fittings and furnishing. 7. The developer reserves, the right to make revisions or alterations, at its absolute discretion, without any liability whatsoever.

# APARTMENT 304

## 2 Bedroom | Type C

Internal area:	203.38 m <sup>2</sup>	2,189 ft <sup>2</sup>
Balcony:	73.57 m <sup>2</sup>	792 ft <sup>2</sup>
Total area:	276.95 m <sup>2</sup>	2,981 ft <sup>2</sup>

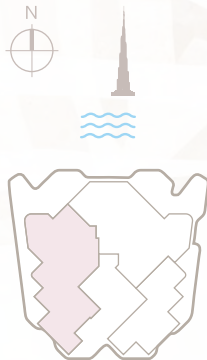


DISCLAIMER 1. All dimensions are in imperial and metric, and measured from finish to finish excluding construction tolerances. 2. All materials, dimensions and drawings are approximate only. 3. Information is subject to change without notice, at developer's absolute discretion. 4. Actual area may vary from the stated area. 5. Drawings not to scale. 6. All images used are for illustrative purposes only and do not represent the actual size, features, specifications, fittings and furnishing. 7. The developer reserves, the right to make revisions or alterations, at its absolute discretion, without any liability whatsoever.

# APARTMENT 401

## 4 Bedroom | Type A

Internal area:	411.63 m <sup>2</sup>	4,431 ft <sup>2</sup>
Balcony:	164.02 m <sup>2</sup>	1,765 ft <sup>2</sup>
Total area:	575.65 m <sup>2</sup>	6,196 ft <sup>2</sup>



DISCLAIMER 1. All dimensions are in imperial and metric, and measured from finish to finish excluding construction tolerances. 2. All materials, dimensions and drawings are approximate only. 3. Information is subject to change without notice, at developer's absolute discretion. 4. Actual area may vary from the stated area. 5. Drawings not to scale. 6. All images used are for illustrative purposes only and do not represent the actual size, features, specifications, fittings and furnishing. 7. The developer reserves, the right to make revisions or alterations, at its absolute discretion, without any liability whatsoever.

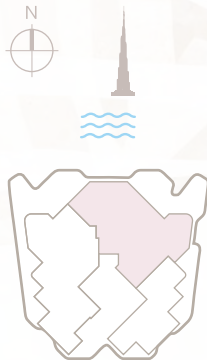
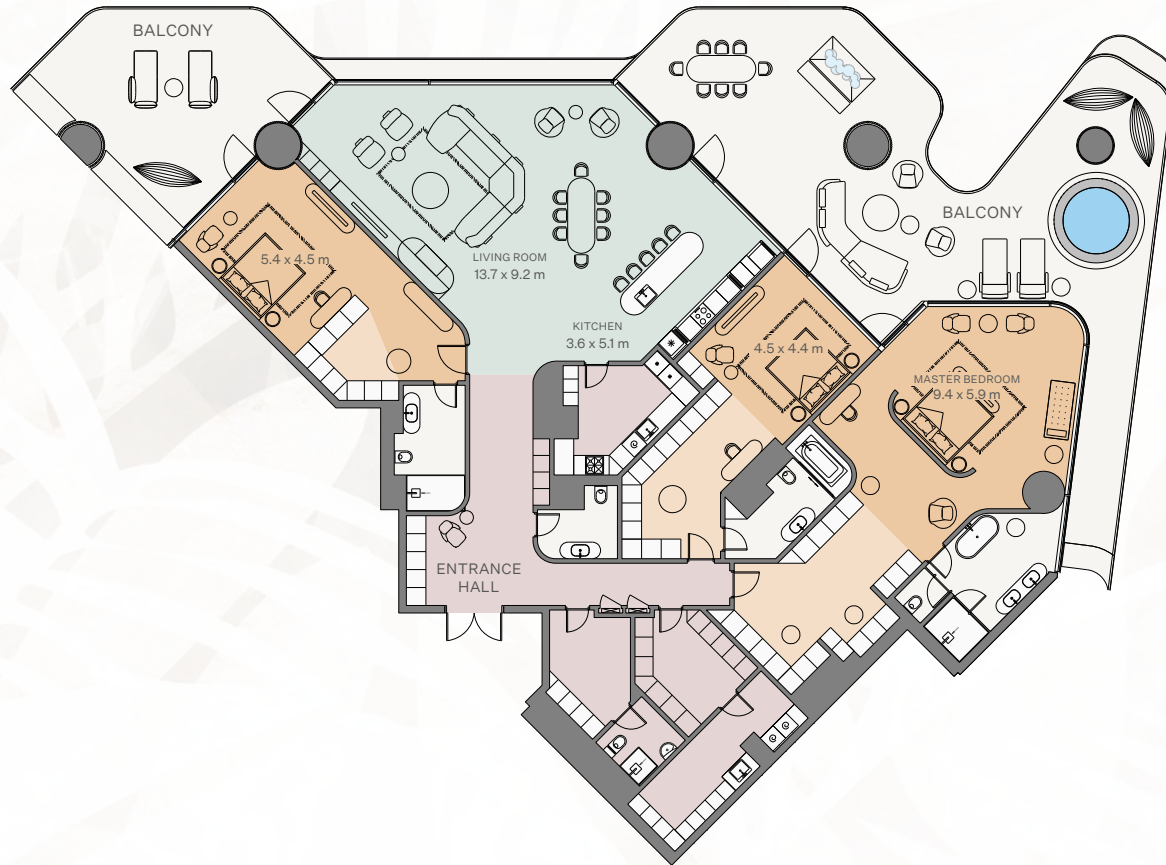
# Eyeza

DUBAI

## APARTMENT 402

3 Bedroom | Type D

Internal area: 410.71 m<sup>2</sup> 4,421 ft<sup>2</sup>  
Balcony: 178.99 m<sup>2</sup> 1,926 ft<sup>2</sup>  
Total area: 589.70 m<sup>2</sup> 6,347 ft<sup>2</sup>



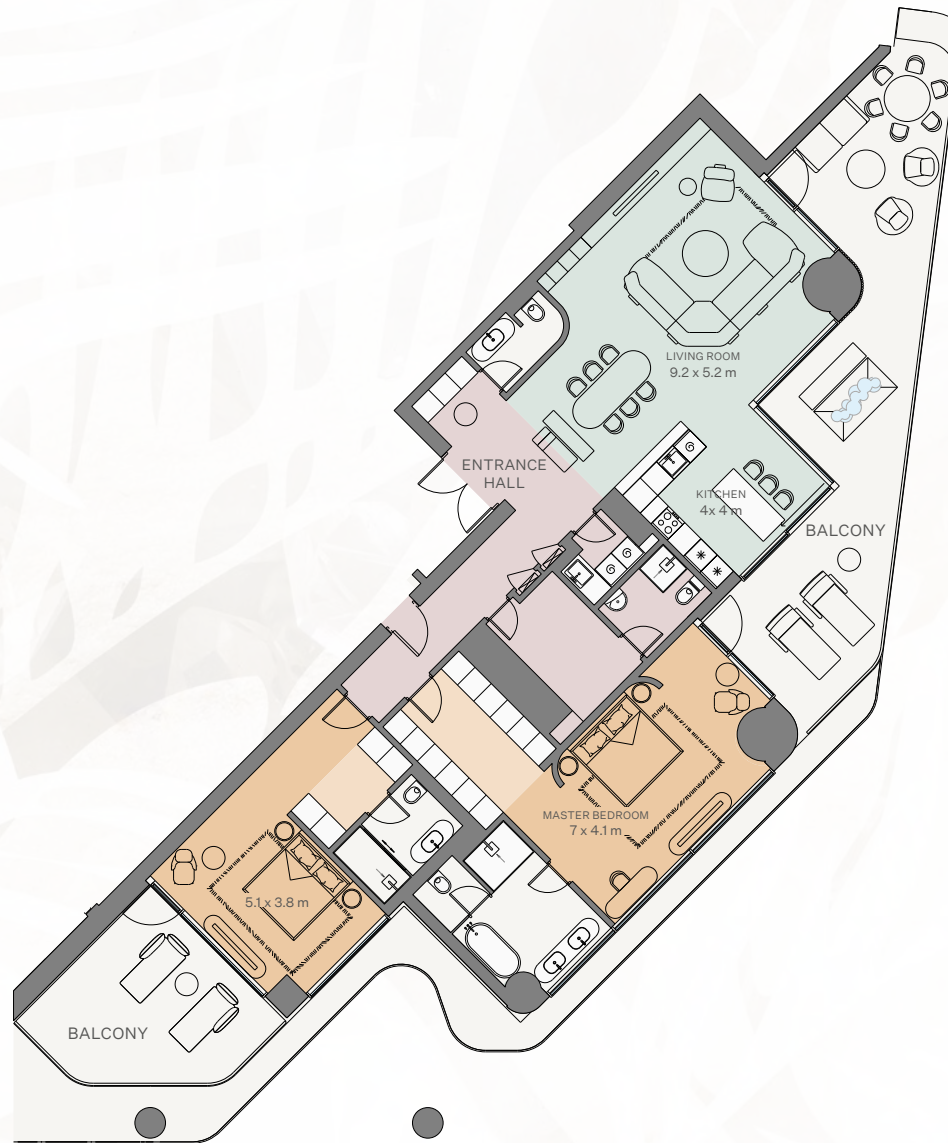
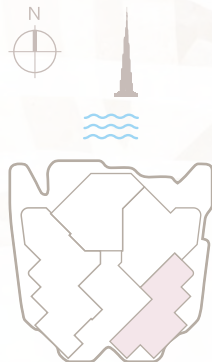
DISCLAIMER 1. All dimensions are in imperial and metric, and measured from finish to finish excluding construction tolerances. 2. All materials, dimensions and drawings are approximate only. 3. Information is subject to change without notice, at developer's absolute discretion. 4. Actual area may vary from the stated area. 5. Drawings not to scale. 6. All images used are for illustrative purposes only and do not represent the actual size, features, specifications, fittings and furnishing. 7. The developer reserves, the right to make revisions or alterations, at its absolute discretion, without any liability whatsoever.

BY R.EVOLUTION

# APARTMENT 403

## 2 Bedroom | Type C

Internal area:	203.26 m <sup>2</sup>	2,188 ft <sup>2</sup>
Balcony:	79.3 m <sup>2</sup>	853 ft <sup>2</sup>
Total area:	282.56 m <sup>2</sup>	3,041 ft <sup>2</sup>



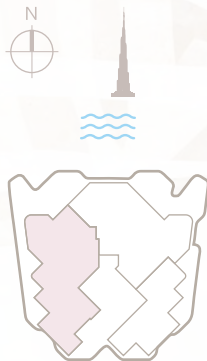
DISCLAIMER 1. All dimensions are in imperial and metric, and measured from finish to finish excluding construction tolerances. 2. All materials, dimensions and drawings are approximate only. 3. Information is subject to change without notice, at developer's absolute discretion. 4. Actual area may vary from the stated area. 5. Drawings not to scale. 6. All images used are for illustrative purposes only and do not represent the actual size, features, specifications, fittings and furnishing. 7. The developer reserves, the right to make revisions or alterations, at its absolute discretion, without any liability whatsoever.



# APARTMENT 501

## 3 Bedroom | Type A

Internal area:	411.69 m <sup>2</sup>	4,431 ft <sup>2</sup>
Balcony:	163.95 m <sup>2</sup>	1,765 ft <sup>2</sup>
Total area:	575.64 m <sup>2</sup>	6,196 ft <sup>2</sup>



DISCLAIMER 1. All dimensions are in imperial and metric, and measured from finish to finish excluding construction tolerances. 2. All materials, dimensions and drawings are approximate only. 3. Information is subject to change without notice, at developer's absolute discretion. 4. Actual area may vary from the stated area. 5. Drawings not to scale. 6. All images used are for illustrative purposes only and do not represent the actual size, features, specifications, fittings and furnishing. 7. The developer reserves, the right to make revisions or alterations, at its absolute discretion, without any liability whatsoever.

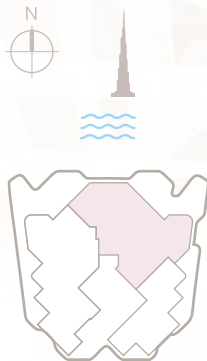
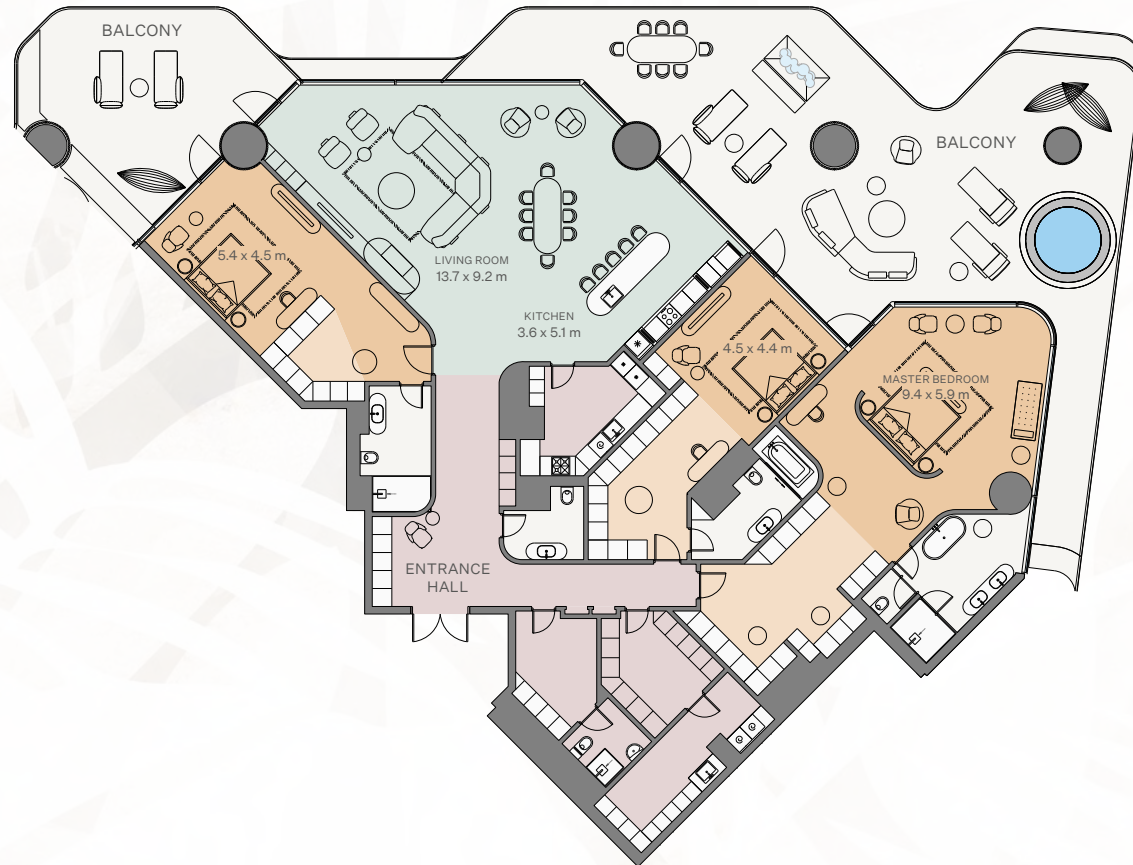
# Eyeza

DUBAI

## APARTMENT 502

3 Bedroom | Type D

Internal area:	410.7 m <sup>2</sup>	4,421 ft <sup>2</sup>
Balcony:	200.13 m <sup>2</sup>	2,154 ft <sup>2</sup>
Total area:	610.83 m <sup>2</sup>	6,575 ft <sup>2</sup>



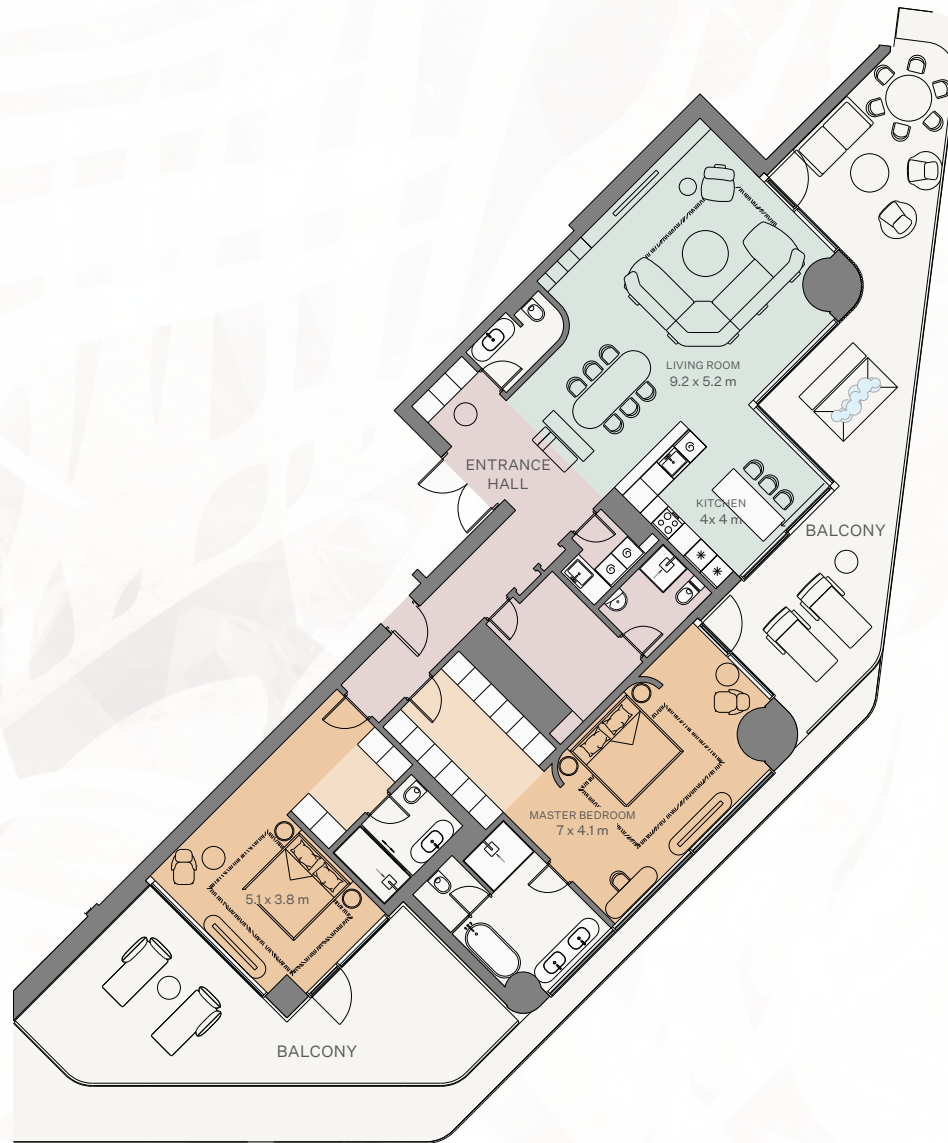
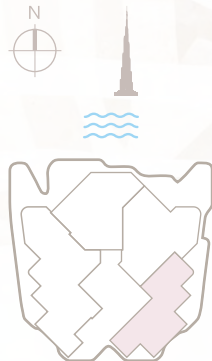
DISCLAIMER 1. All dimensions are in imperial and metric, and measured from finish to finish excluding construction tolerances. 2. All materials, dimensions and drawings are approximate only. 3. Information is subject to change without notice, at developer's absolute discretion. 4. Actual area may vary from the stated area. 5. Drawings not to scale. 6. All images used are for illustrative purposes only and do not represent the actual size, features, specifications, fittings and furnishing. 7. The developer reserves, the right to make revisions or alterations, at its absolute discretion, without any liability whatsoever.

BY R.EVOLUTION

# APARTMENT 503

## 2 Bedroom | Type C

Internal area:	203.25 m <sup>2</sup>	2,188 ft <sup>2</sup>
Balcony:	99.76 m <sup>2</sup>	1,074 ft <sup>2</sup>
Total area:	303.01 m <sup>2</sup>	3,262 ft <sup>2</sup>

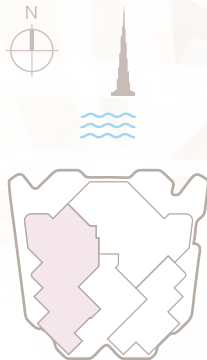


DISCLAIMER 1. All dimensions are in imperial and metric, and measured from finish to finish excluding construction tolerances. 2. All materials, dimensions and drawings are approximate only. 3. Information is subject to change without notice, at developer's absolute discretion. 4. Actual area may vary from the stated area. 5. Drawings not to scale. 6. All images used are for illustrative purposes only and do not represent the actual size, features, specifications, fittings and furnishing. 7. The developer reserves, the right to make revisions or alterations, at its absolute discretion, without any liability whatsoever.

# APARTMENT 601

## 4 Bedroom | Type A

Internal area:	411.67 m <sup>2</sup>	4,431 ft <sup>2</sup>
Balcony:	160.81 m <sup>2</sup>	1,731 ft <sup>2</sup>
Total area:	572.48 m <sup>2</sup>	6,162 ft <sup>2</sup>



DISCLAIMER 1. All dimensions are in imperial and metric, and measured from finish to finish excluding construction tolerances. 2. All materials, dimensions and drawings are approximate only. 3. Information is subject to change without notice, at developer's absolute discretion. 4. Actual area may vary from the stated area. 5. Drawings not to scale. 6. All images used are for illustrative purposes only and do not represent the actual size, features, specifications, fittings and furnishing. 7. The developer reserves, the right to make revisions or alterations, at its absolute discretion, without any liability whatsoever.

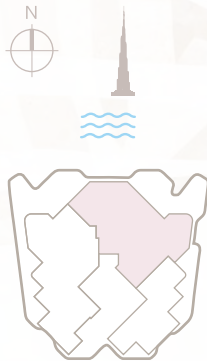
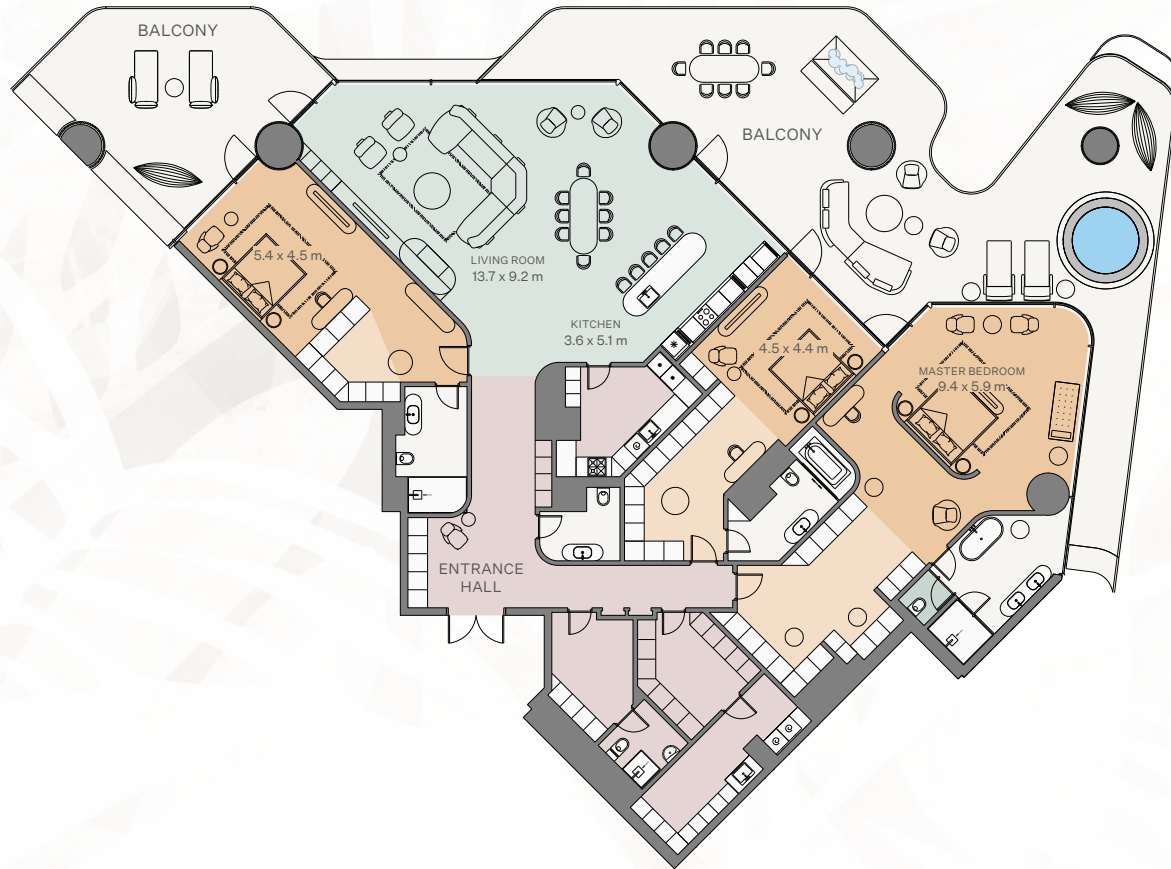
# Eyeza

DUBAI

## APARTMENT 602

3 Bedroom | Type D

Internal area: 410.71 m<sup>2</sup> 4,421 ft<sup>2</sup>  
Balcony: 189.97 m<sup>2</sup> 2,045 ft<sup>2</sup>  
Total area: 600.68 m<sup>2</sup> 6,466 ft<sup>2</sup>



DISCLAIMER 1. All dimensions are in imperial and metric, and measured from finish to finish excluding construction tolerances. 2. All materials, dimensions and drawings are approximate only. 3. Information is subject to change without notice, at developer's absolute discretion. 4. Actual area may vary from the stated area. 5. Drawings not to scale. 6. All images used are for illustrative purposes only and do not represent the actual size, features, specifications, fittings and furnishing. 7. The developer reserves, the right to make revisions or alterations, at its absolute discretion, without any liability whatsoever.

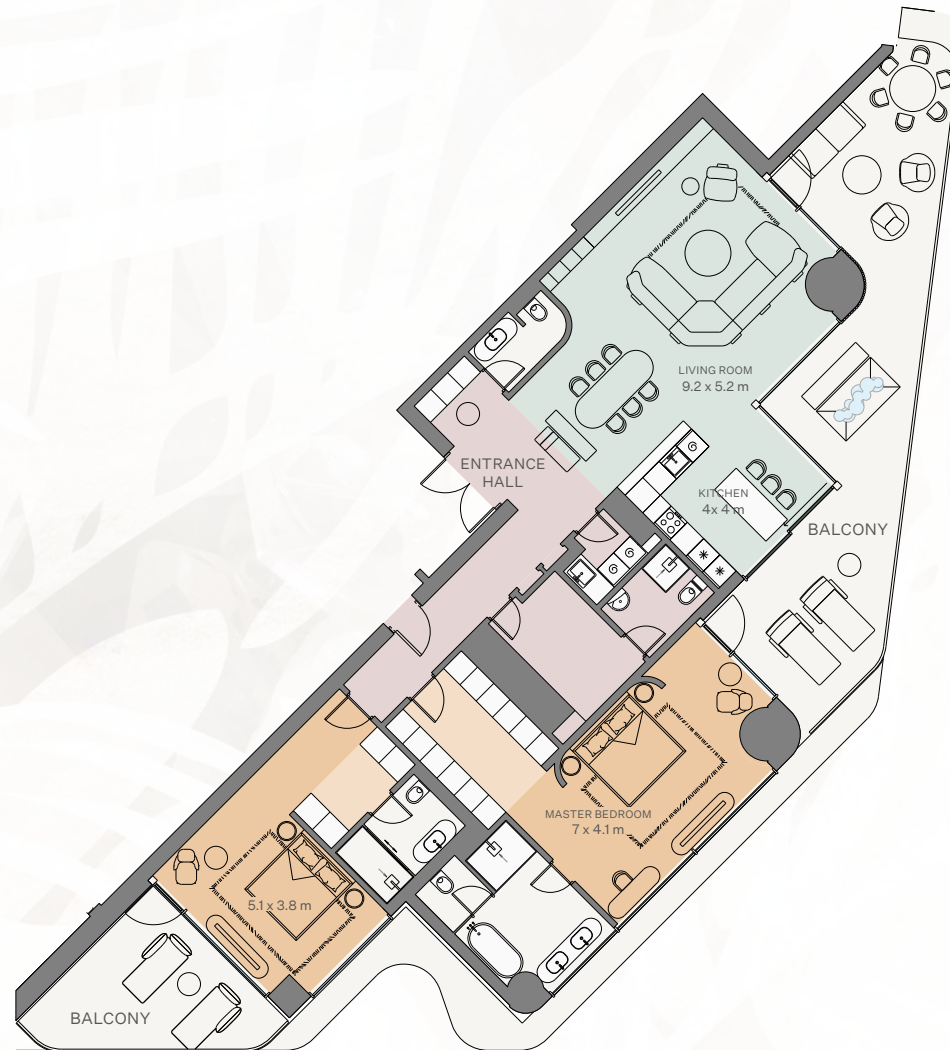
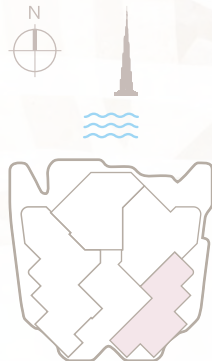
# Eyeza

DUBAI

## APARTMENT 603

3 Bedroom | Type C

Internal area:	203.24 m <sup>2</sup>	2,188 ft <sup>2</sup>
Balcony:	75.12 m <sup>2</sup>	808 ft <sup>2</sup>
Total area:	278.36 m <sup>2</sup>	2,996 ft <sup>2</sup>



DISCLAIMER 1. All dimensions are in imperial and metric, and measured from finish to finish excluding construction tolerances. 2. All materials, dimensions and drawings are approximate only. 3. Information is subject to change without notice, at developer's absolute discretion. 4. Actual area may vary from the stated area. 5. Drawings not to scale. 6. All images used are for illustrative purposes only and do not represent the actual size, features, specifications, fittings and furnishing. 7. The developer reserves, the right to make revisions or alterations, at its absolute discretion, without any liability whatsoever.

BY R.EVOLUTION

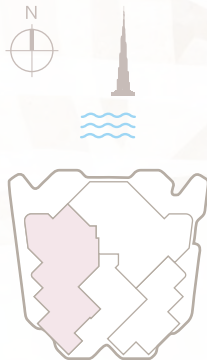
# Eyeza

DUBAI

## APARTMENT 701

4 Bedroom | Type A

Internal area: 411.7 m<sup>2</sup> 4,432 ft<sup>2</sup>  
Balcony: 159.82 m<sup>2</sup> 1,720 ft<sup>2</sup>  
Total area: 571.52 m<sup>2</sup> 6,152 ft<sup>2</sup>



DISCLAIMER 1. All dimensions are in imperial and metric, and measured from finish to finish excluding construction tolerances. 2. All materials, dimensions and drawings are approximate only. 3. Information is subject to change without notice, at developer's absolute discretion. 4. Actual area may vary from the stated area. 5. Drawings not to scale. 6. All images used are for illustrative purposes only and do not represent the actual size, features, specifications, fittings and furnishing. 7. The developer reserves, the right to make revisions or alterations, at its absolute discretion, without any liability whatsoever.

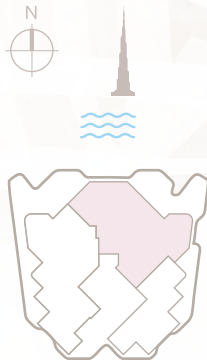
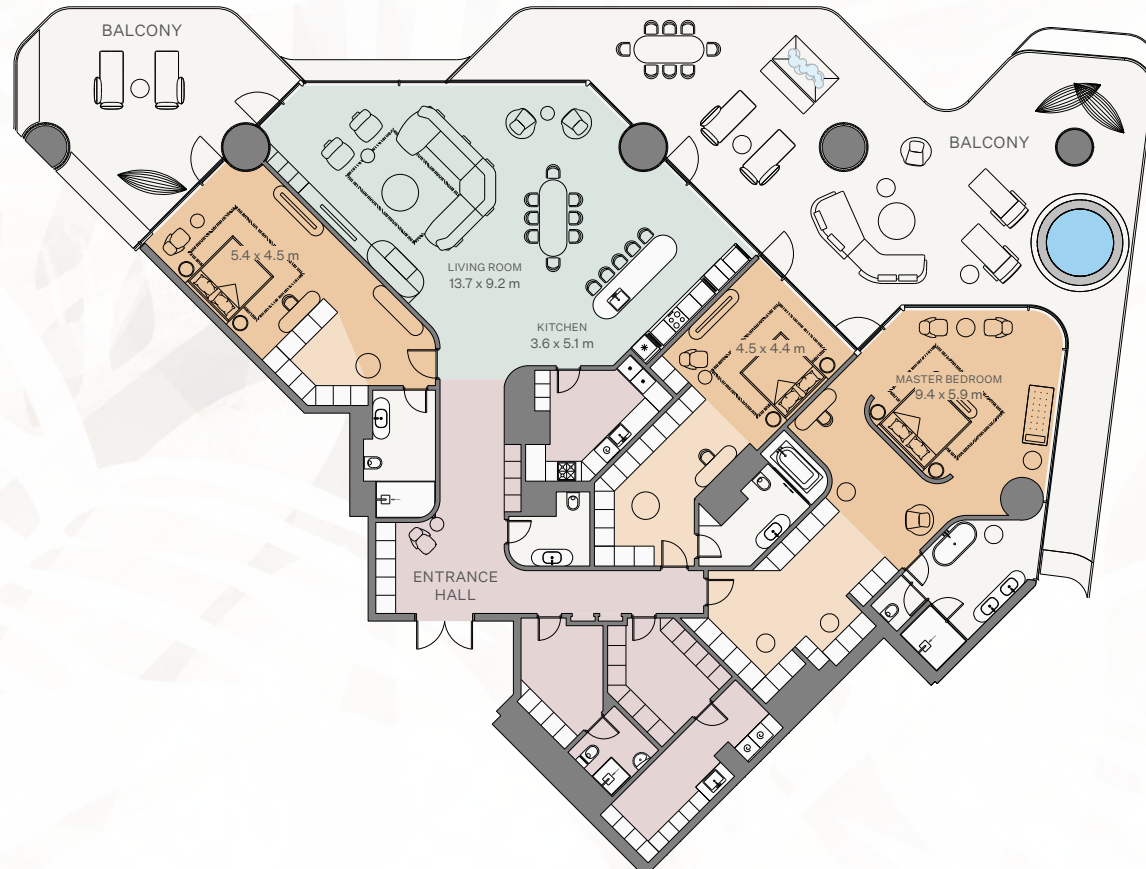
# Eyeza

DUBAI

## APARTMENT 702

3 Bedroom | Type D

Internal area:	410.71 m <sup>2</sup>	4,421 ft <sup>2</sup>
Balcony:	201.02 m <sup>2</sup>	2,164 ft <sup>2</sup>
Total area:	611.73 m <sup>2</sup>	6,585 ft <sup>2</sup>



DISCLAIMER 1. All dimensions are in imperial and metric, and measured from finish to finish excluding construction tolerances. 2. All materials, dimensions and drawings are approximate only. 3. Information is subject to change without notice, at developer's absolute discretion. 4. Actual area may vary from the stated area. 5. Drawings not to scale. 6. All images used are for illustrative purposes only and do not represent the actual size, features, specifications, fittings and furnishing. 7. The developer reserves, the right to make revisions or alterations, at its absolute discretion, without any liability whatsoever.



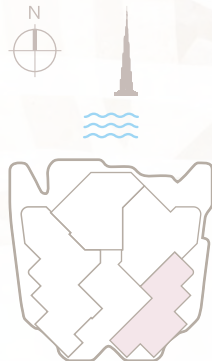
# Eyeza

DUBAI

## APARTMENT 703

2 Bedroom | Type C

Internal area:	203.25 m <sup>2</sup>	2,188 ft <sup>2</sup>
Balcony:	70.38 m <sup>2</sup>	757 ft <sup>2</sup>
Total area:	273.63 m <sup>2</sup>	2,945 ft <sup>2</sup>



DISCLAIMER 1. All dimensions are in imperial and metric, and measured from finish to finish excluding construction tolerances. 2. All materials, dimensions and drawings are approximate only. 3. Information is subject to change without notice, at developer's absolute discretion. 4. Actual area may vary from the stated area. 5. Drawings not to scale. 6. All images used are for illustrative purposes only and do not represent the actual size, features, specifications, fittings and furnishing. 7. The developer reserves, the right to make revisions or alterations, at its absolute discretion, without any liability whatsoever.

# APARTMENT 801

## 4 Bedroom | Type A

Internal area:	411.69 m <sup>2</sup>	4,431 ft <sup>2</sup>
Balcony:	160.83 m <sup>2</sup>	1,732 ft <sup>2</sup>
Total area:	572.52 m <sup>2</sup>	6,163 ft <sup>2</sup>



DISCLAIMER 1. All dimensions are in imperial and metric, and measured from finish to finish excluding construction tolerances. 2. All materials, dimensions and drawings are approximate only. 3. Information is subject to change without notice, at developer's absolute discretion. 4. Actual area may vary from the stated area. 5. Drawings not to scale. 6. All images used are for illustrative purposes only and do not represent the actual size, features, specifications, fittings and furnishing. 7. The developer reserves, the right to make revisions or alterations, at its absolute discretion, without any liability whatsoever.

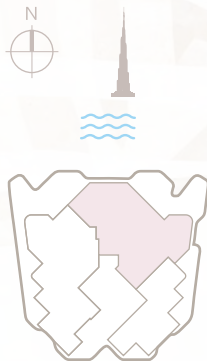
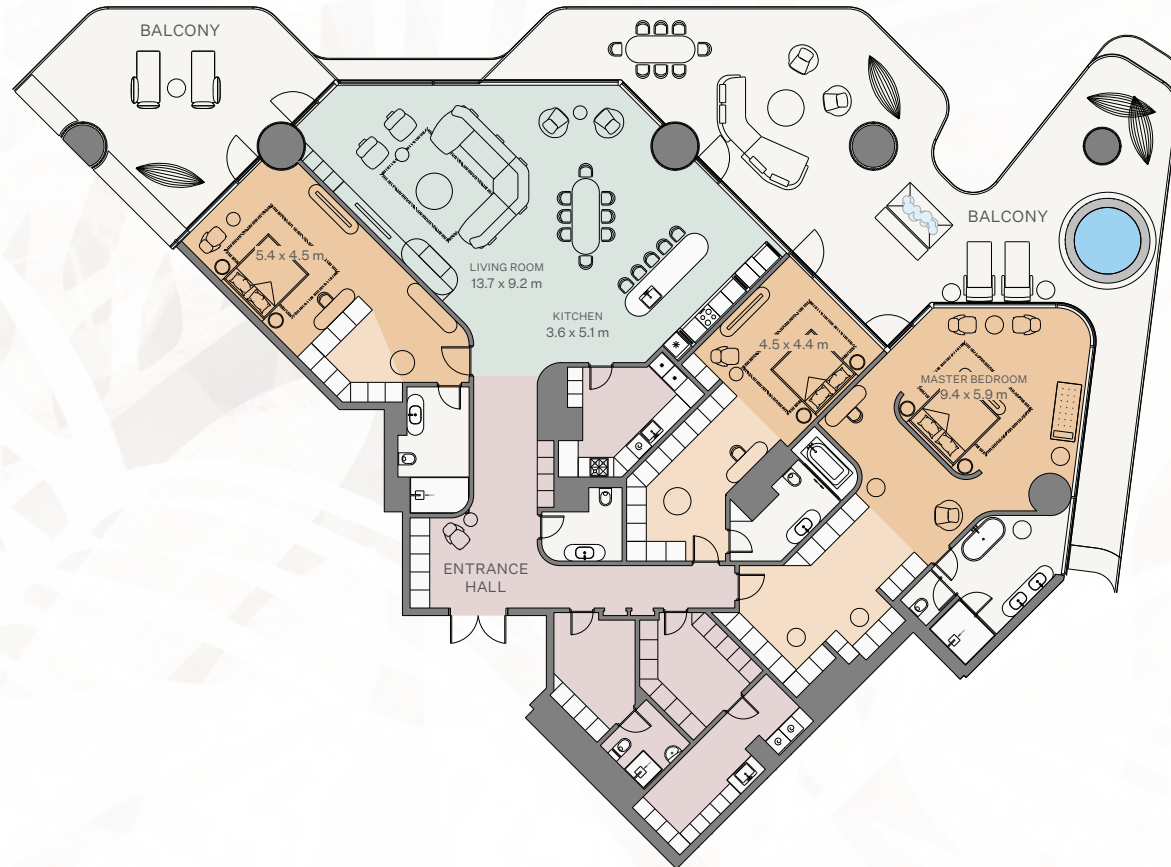
# Eyeza

DUBAI

## APARTMENT 802

3 Bedroom | Type D

Internal area: 410.71 m<sup>2</sup> 4,421 ft<sup>2</sup>  
Balcony: 189.97 m<sup>2</sup> 2,045 ft<sup>2</sup>  
Total area: 600.68 m<sup>2</sup> 6,466 ft<sup>2</sup>

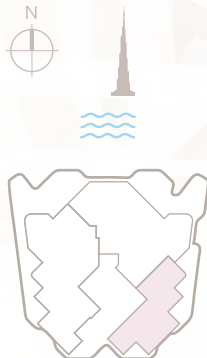


DISCLAIMER 1. All dimensions are in imperial and metric, and measured from finish to finish excluding construction tolerances. 2. All materials, dimensions and drawings are approximate only. 3. Information is subject to change without notice, at developer's absolute discretion. 4. Actual area may vary from the stated area. 5. Drawings not to scale. 6. All images used are for illustrative purposes only and do not represent the actual size, features, specifications, fittings and furnishing. 7. The developer reserves, the right to make revisions or alterations, at its absolute discretion, without any liability whatsoever.

# APARTMENT 803

2 Bedroom | Type C

Internal area:	203.26 m <sup>2</sup>	2,188 ft <sup>2</sup>
Balcony:	70.37 m <sup>2</sup>	757 ft <sup>2</sup>
Total area:	273.63 m <sup>2</sup>	2,945 ft <sup>2</sup>



DISCLAIMER 1. All dimensions are in imperial and metric, and measured from finish to finish excluding construction tolerances. 2. All materials, dimensions and drawings are approximate only. 3. Information is subject to change without notice, at developer's absolute discretion. 4. Actual area may vary from the stated area. 5. Drawings not to scale. 6. All images used are for illustrative purposes only and do not represent the actual size, features, specifications, fittings and furnishing. 7. The developer reserves, the right to make revisions or alterations, at its absolute discretion, without any liability whatsoever.

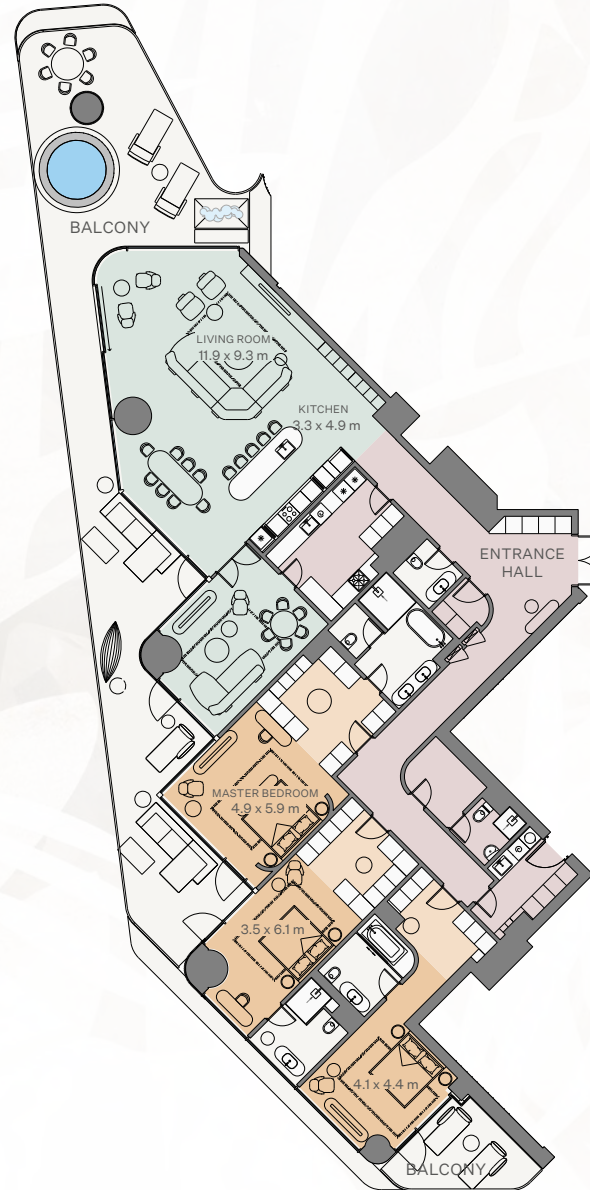
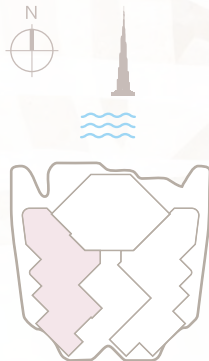
# Eyeza

DUBAI

## APARTMENT 901

3 Bedroom | Type A

Internal area:	346.29 m <sup>2</sup>	3,727 ft <sup>2</sup>
Balcony:	136.25 m <sup>2</sup>	1,467 ft <sup>2</sup>
Total area:	482.54 m <sup>2</sup>	5,194 ft <sup>2</sup>



DISCLAIMER 1. All dimensions are in imperial and metric, and measured from finish to finish excluding construction tolerances. 2. All materials, dimensions and drawings are approximate only. 3. Information is subject to change without notice, at developer's absolute discretion. 4. Actual area may vary from the stated area. 5. Drawings not to scale. 6. All images used are for illustrative purposes only and do not represent the actual size, features, specifications, fittings and furnishing. 7. The developer reserves, the right to make revisions or alterations, at it's absolute discretion, without any liability whatsoever.

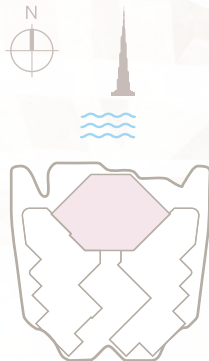
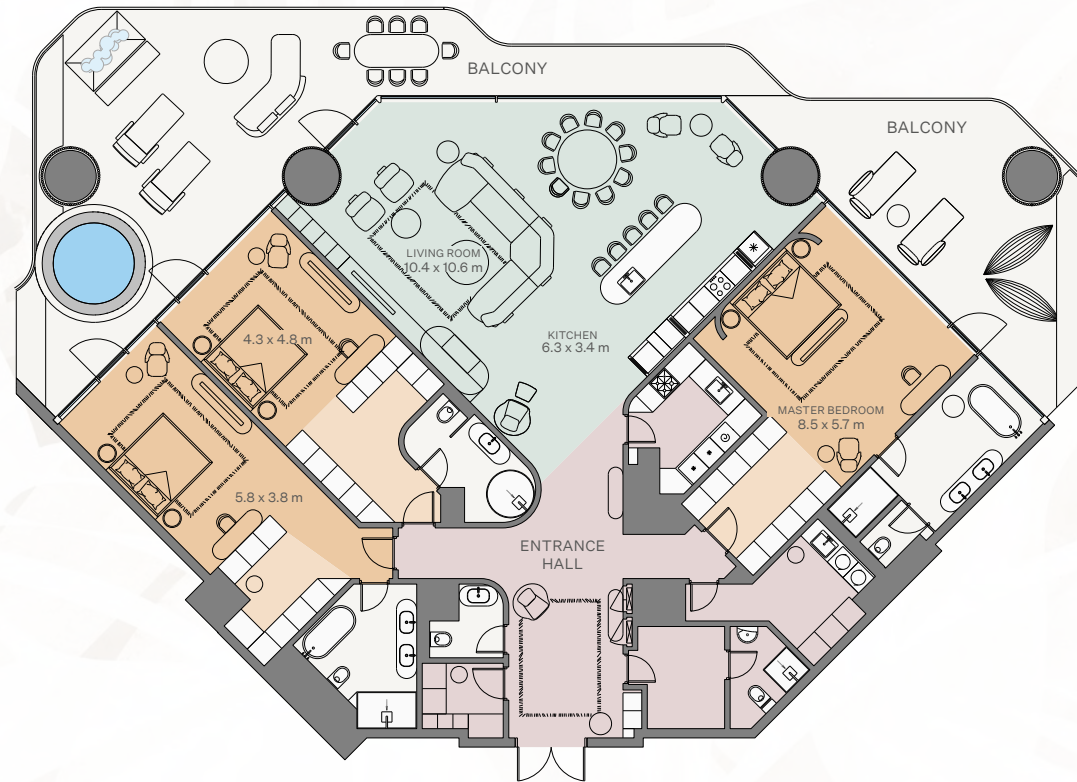
# Eyeza

DUBAI

## APARTMENT 902

3 Bedroom | Type B

Internal area: 319.3 m<sup>2</sup> 3,437 ft<sup>2</sup>  
Balcony: 125.16 m<sup>2</sup> 1,347 ft<sup>2</sup>  
Total area: 444.46 m<sup>2</sup> 4,784 ft<sup>2</sup>



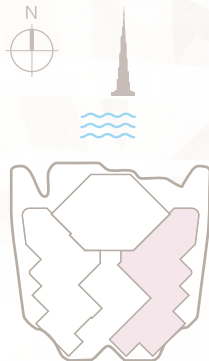
DISCLAIMER 1. All dimensions are in imperial and metric, and measured from finish to finish excluding construction tolerances. 2. All materials, dimensions and drawings are approximate only. 3. Information is subject to change without notice, at developer's absolute discretion. 4. Actual area may vary from the stated area. 5. Drawings not to scale. 6. All images used are for illustrative purposes only and do not represent the actual size, features, specifications, fittings and furnishing. 7. The developer reserves, the right to make revisions or alterations, at its absolute discretion, without any liability whatsoever.

BY R.EVOLUTION

# APARTMENT 903

3 Bedroom | Type C

Internal area:	360.99 m <sup>2</sup>	3,886 ft <sup>2</sup>
Balcony:	142.38 m <sup>2</sup>	1,532 ft <sup>2</sup>
Total area:	503.37 m <sup>2</sup>	5,418 ft <sup>2</sup>

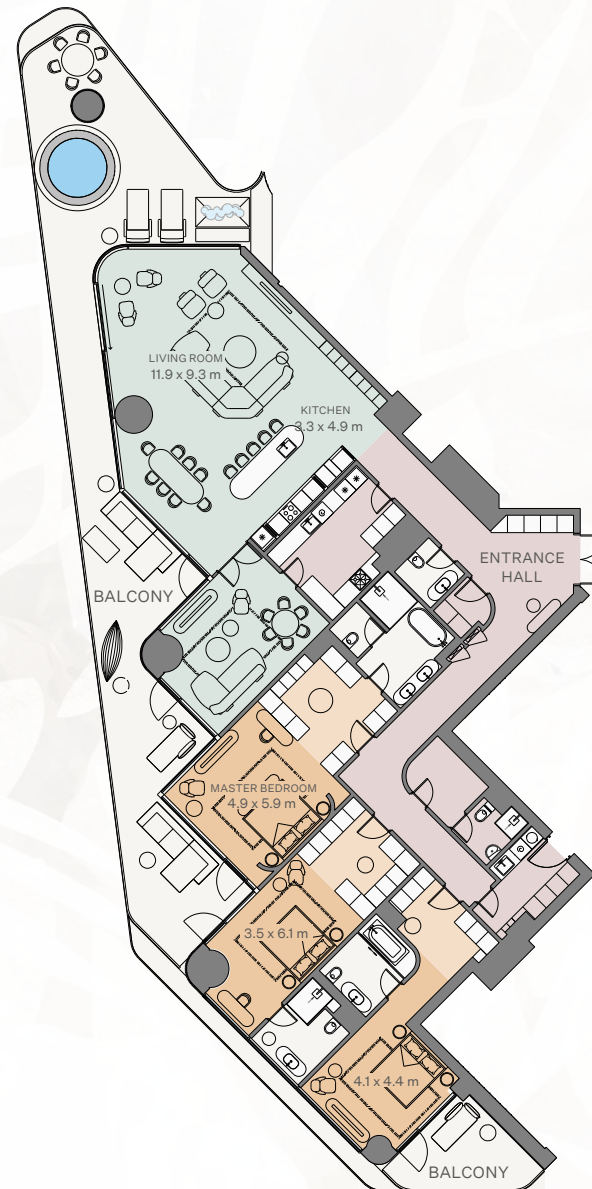
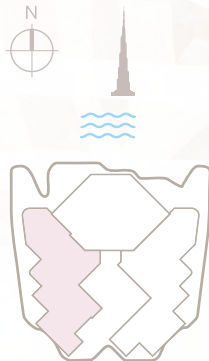


DISCLAIMER 1. All dimensions are in imperial and metric, and measured from finish to finish excluding construction tolerances. 2. All materials, dimensions and drawings are approximate only. 3. Information is subject to change without notice, at developer's absolute discretion. 4. Actual area may vary from the stated area. 5. Drawings not to scale. 6. All images used are for illustrative purposes only and do not represent the actual size, features, specifications, fittings and furnishing. 7. The developer reserves, the right to make revisions or alterations, at its absolute discretion, without any liability whatsoever.

# APARTMENT 1001

3 Bedroom | Type A

Internal area:	346.3 m <sup>2</sup>	3,728 ft <sup>2</sup>
Balcony:	130.95 m <sup>2</sup>	1,409 ft <sup>2</sup>
Total area:	477.25 m <sup>2</sup>	5,137 ft <sup>2</sup>



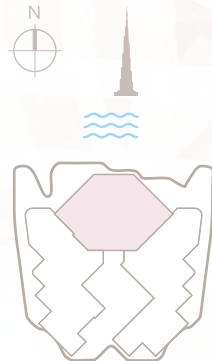
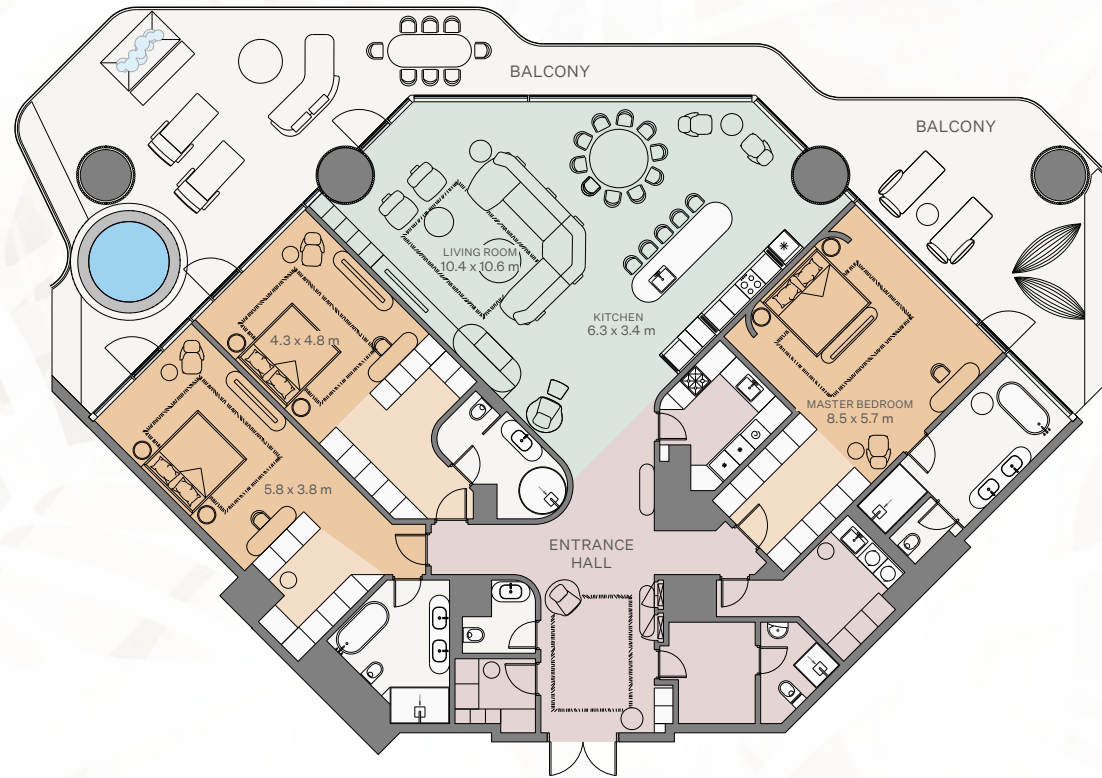
DISCLAIMER 1. All dimensions are in imperial and metric, and measured from finish to finish excluding construction tolerances. 2. All materials, dimensions and drawings are approximate only. 3. Information is subject to change without notice, at developer's absolute discretion. 4. Actual area may vary from the stated area. 5. Drawings not to scale. 6. All images used are for illustrative purposes only and do not represent the actual size, features, specifications, fittings and furnishing. 7. The developer reserves, the right to make revisions | alterations, at it's absolute discretion, without any liability whatsoever.



# APARTMENT 1002

3 Bedroom | Type B

Internal area:	319.3 m <sup>2</sup>	3,437 ft <sup>2</sup>
Balcony:	129.33 m <sup>2</sup>	1,392 ft <sup>2</sup>
Total area:	448.63 m <sup>2</sup>	4,829 ft <sup>2</sup>

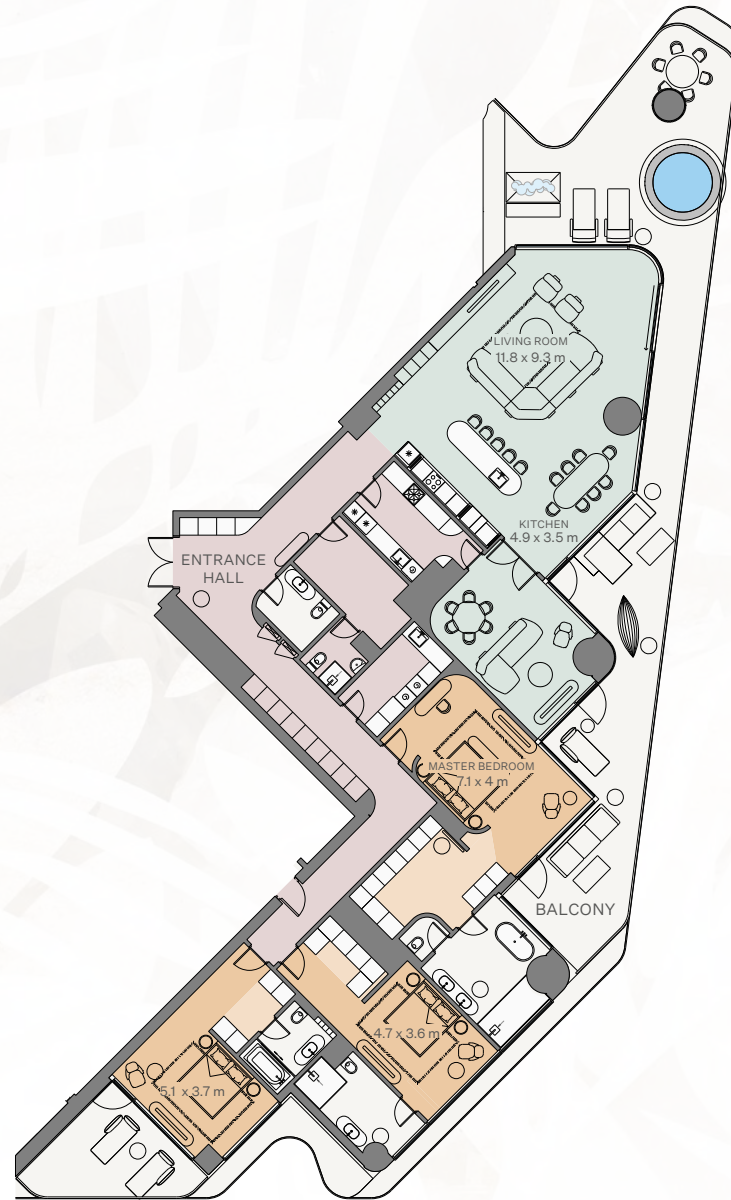
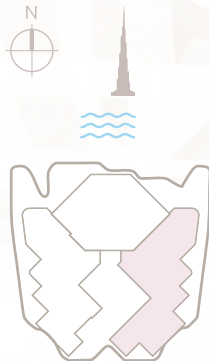


DISCLAIMER 1. All dimensions are in imperial and metric, and measured from finish to finish excluding construction tolerances. 2. All materials, dimensions and drawings are approximate only. 3. Information is subject to change without notice, at developer's absolute discretion. 4. Actual area may vary from the stated area. 5. Drawings not to scale. 6. All images used are for illustrative purposes only and do not represent the actual size, features, specifications, fittings and furnishing. 7. The developer reserves, the right to make revisions or alterations, at its absolute discretion, without any liability whatsoever.

# APARTMENT 1003

3 Bedroom | Type C

Internal area: 360.99 m<sup>2</sup> 3,886 ft<sup>2</sup>  
 Balcony: 140.66 m<sup>2</sup> 1,514 ft<sup>2</sup>  
 Total area: 501.65 m<sup>2</sup> 5,400 ft<sup>2</sup>

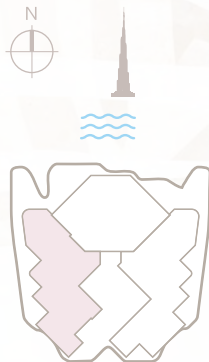


DISCLAIMER 1. All dimensions are in imperial and metric, and measured from finish to finish excluding construction tolerances. 2. All materials, dimensions and drawings are approximate only. 3. Information is subject to change without notice, at developer's absolute discretion. 4. Actual area may vary from the stated area. 5. Drawings not to scale. 6. All images used are for illustrative purposes only and do not represent the actual size, features, specifications, fittings and furnishing. 7. The developer reserves, the right to make revisions or alterations, at its absolute discretion, without any liability whatsoever.

# APARTMENT 1101

## 3 Bedroom | Type A

Internal area:	346.3 m <sup>2</sup>	3,728 ft <sup>2</sup>
Balcony:	136.26 m <sup>2</sup>	1,466 ft <sup>2</sup>
Total area:	482.56 m <sup>2</sup>	5,194 ft <sup>2</sup>



DISCLAIMER 1. All dimensions are in imperial and metric, and measured from finish to finish excluding construction tolerances. 2. All materials, dimensions and drawings are approximate only. 3. Information is subject to change without notice, at developer's absolute discretion. 4. Actual area may vary from the stated area. 5. Drawings not to scale. 6. All images used are for illustrative purposes only and do not represent the actual size, features, specifications, fittings and furnishing. 7. The developer reserves, the right to make revisions or alterations, at its absolute discretion, without any liability whatsoever.

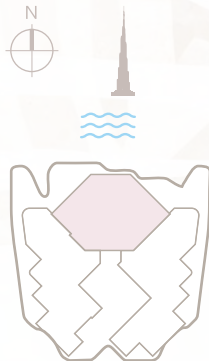
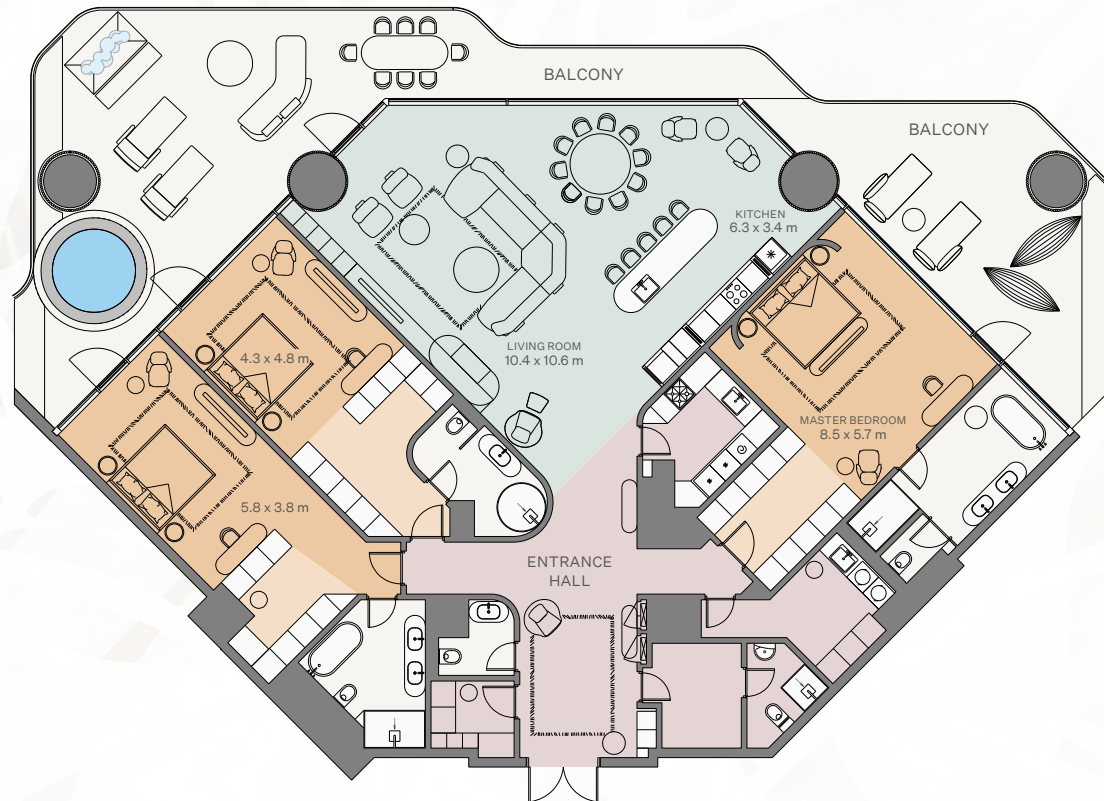
# Eyeza

DUBAI

## APARTMENT 1102

3 Bedroom | Type B

Internal area: 319.3 m<sup>2</sup> 3,437 ft<sup>2</sup>  
Balcony: 125.16 m<sup>2</sup> 1,347 ft<sup>2</sup>  
Total area: 444.46 m<sup>2</sup> 4,784 ft<sup>2</sup>



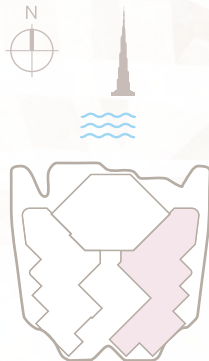
DISCLAIMER 1. All dimensions are in imperial and metric, and measured from finish to finish excluding construction tolerances. 2. All materials, dimensions and drawings are approximate only. 3. Information is subject to change without notice, at developer's absolute discretion. 4. Actual area may vary from the stated area. 5. Drawings not to scale. 6. All images used are for illustrative purposes only and do not represent the actual size, features, specifications, fittings and furnishing. 7. The developer reserves, the right to make revisions or alterations, at its absolute discretion, without any liability whatsoever.

BY R.EVOLUTION

# APARTMENT 1103

3 Bedroom | Type C

Internal area:	360.99 m <sup>2</sup>	3,886 ft <sup>2</sup>
Balcony:	147.13 m <sup>2</sup>	1,583 ft <sup>2</sup>
Total area:	508.12 m <sup>2</sup>	5,469 ft <sup>2</sup>

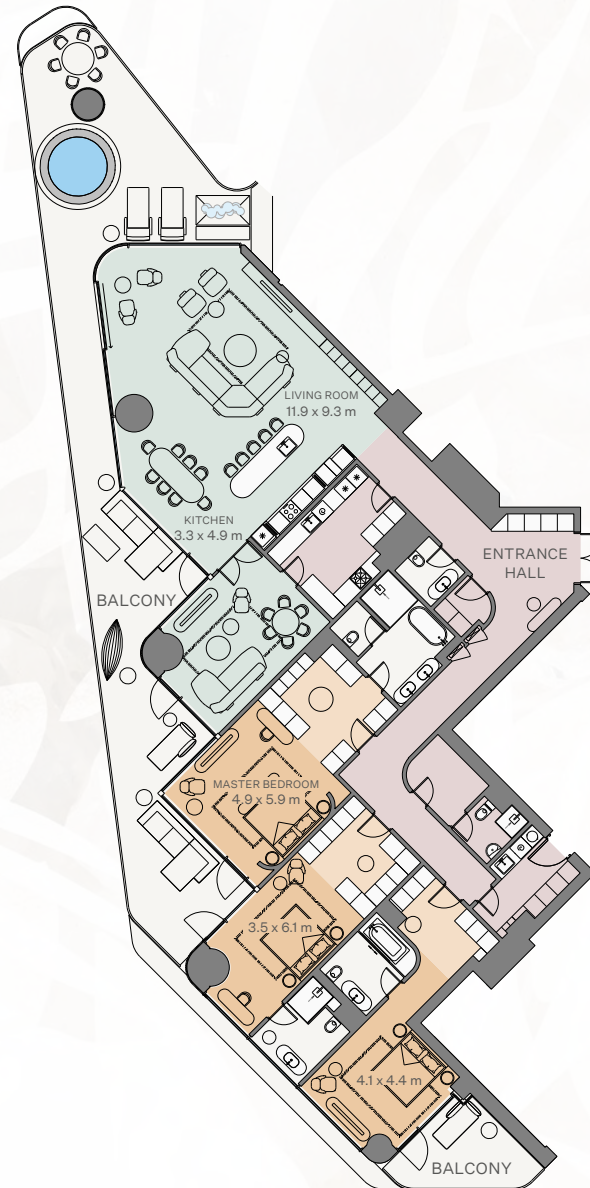
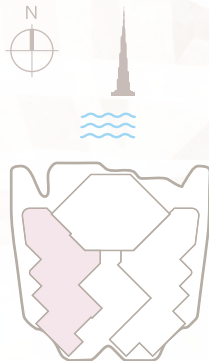


DISCLAIMER 1. All dimensions are in imperial and metric, and measured from finish to finish excluding construction tolerances. 2. All materials, dimensions and drawings are approximate only. 3. Information is subject to change without notice, at developer's absolute discretion. 4. Actual area may vary from the stated area. 5. Drawings not to scale. 6. All images used are for illustrative purposes only and do not represent the actual size, features, specifications, fittings and furnishing. 7. The developer reserves, the right to make revisions or alterations, at it's absolute discretion, without any liability whatsoever.

# APARTMENT 1201

3 Bedroom | Type A

Internal area:	346.29 m <sup>2</sup>	3,727 ft <sup>2</sup>
Balcony:	130.94 m <sup>2</sup>	1,410 ft <sup>2</sup>
Total area:	477.23 m <sup>2</sup>	5,137 ft <sup>2</sup>



DISCLAIMER 1. All dimensions are in imperial and metric, and measured from finish to finish excluding construction tolerances. 2. All materials, dimensions and drawings are approximate only. 3. Information is subject to change without notice, at developer's absolute discretion. 4. Actual area may vary from the stated area. 5. Drawings not to scale. 6. All images used are for illustrative purposes only and do not represent the actual size, features, specifications, fittings and furnishing. 7. The developer reserves, the right to make revisions or alterations, at its absolute discretion, without any liability whatsoever.

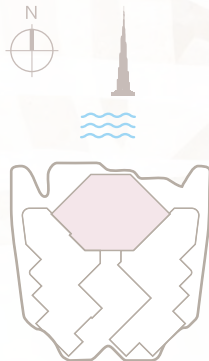
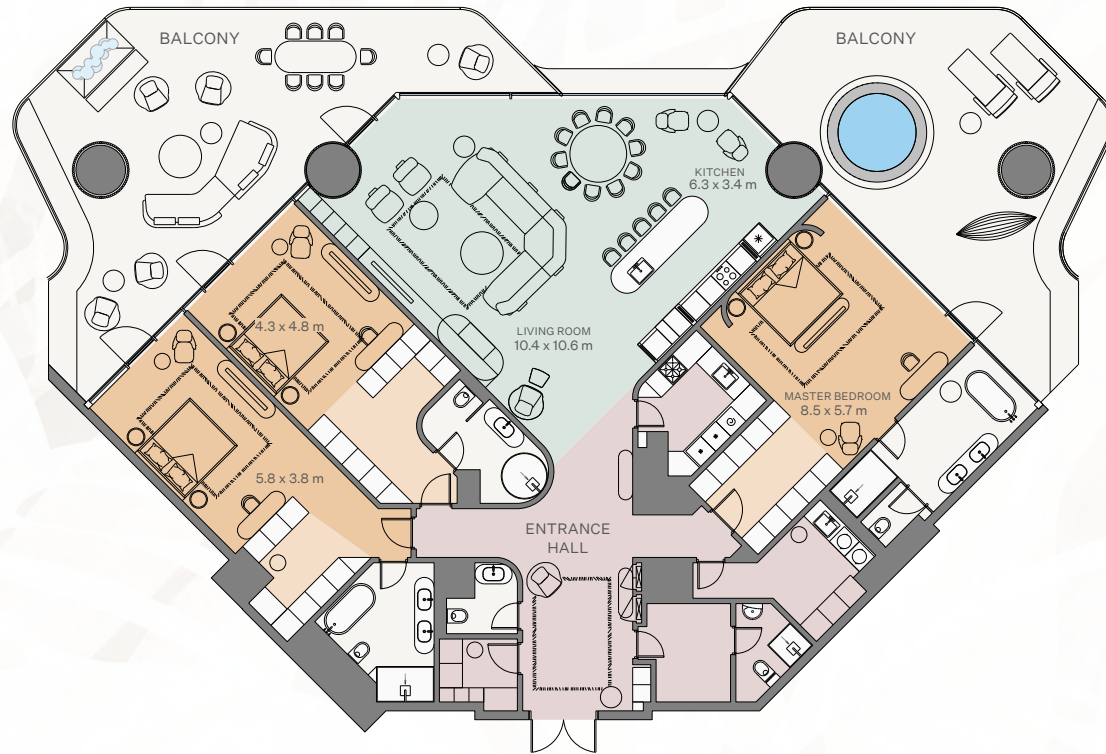
# Eyeza

DUBAI

## APARTMENT 1202

3 Bedroom | Type B

Internal area: 319.3 m<sup>2</sup> 3,437 ft<sup>2</sup>  
Balcony: 145.34 m<sup>2</sup> 1,564 ft<sup>2</sup>  
Total area: 465.64 m<sup>2</sup> 5,001 ft<sup>2</sup>



DISCLAIMER 1. All dimensions are in imperial and metric, and measured from finish to finish excluding construction tolerances. 2. All materials, dimensions and drawings are approximate only. 3. Information is subject to change without notice, at developer's absolute discretion. 4. Actual area may vary from the stated area. 5. Drawings not to scale. 6. All images used are for illustrative purposes only and do not represent the actual size, features, specifications, fittings and furnishing. 7. The developer reserves, the right to make revisions or alterations, at its absolute discretion, without any liability whatsoever.

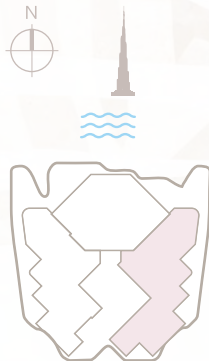
# Eyeza

DUBAI

## APARTMENT 1203

3 Bedroom | Type C

Internal area: 360.68 m<sup>2</sup> 3,886 ft<sup>2</sup>  
Balcony: 131.08 m<sup>2</sup> 1,410 ft<sup>2</sup>  
Total area: 492.06 m<sup>2</sup> 5,296 ft<sup>2</sup>



DISCLAIMER 1. All dimensions are in imperial and metric, and measured from finish to finish excluding construction tolerances. 2. All materials, dimensions and drawings are approximate only. 3. Information is subject to change without notice, at developer's absolute discretion. 4. Actual area may vary from the stated area. 5. Drawings not to scale. 6. All images used are for illustrative purposes only and do not represent the actual size, features, specifications, fittings and furnishing. 7. The developer reserves, the right to make revisions or alterations, at its absolute discretion, without any liability whatsoever.

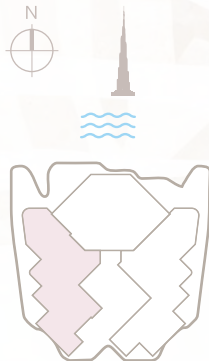
BY R.EVOLUTION



# APARTMENT 1301

3 Bedroom | Type A

Internal area:	346.29 m <sup>2</sup>	3,727 ft <sup>2</sup>
Balcony:	136.25 m <sup>2</sup>	1,467 ft <sup>2</sup>
Total area:	482.54 m <sup>2</sup>	5,194 ft <sup>2</sup>



DISCLAIMER 1. All dimensions are in imperial and metric, and measured from finish to finish excluding construction tolerances. 2. All materials, dimensions and drawings are approximate only. 3. Information is subject to change without notice, at developer's absolute discretion. 4. Actual area may vary from the stated area. 5. Drawings not to scale. 6. All images used are for illustrative purposes only and do not represent the actual size, features, specifications, fittings and furnishing. 7. The developer reserves, the right to make revisions or alterations, at its absolute discretion, without any liability whatsoever.

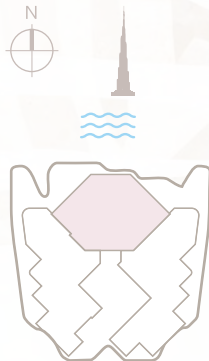
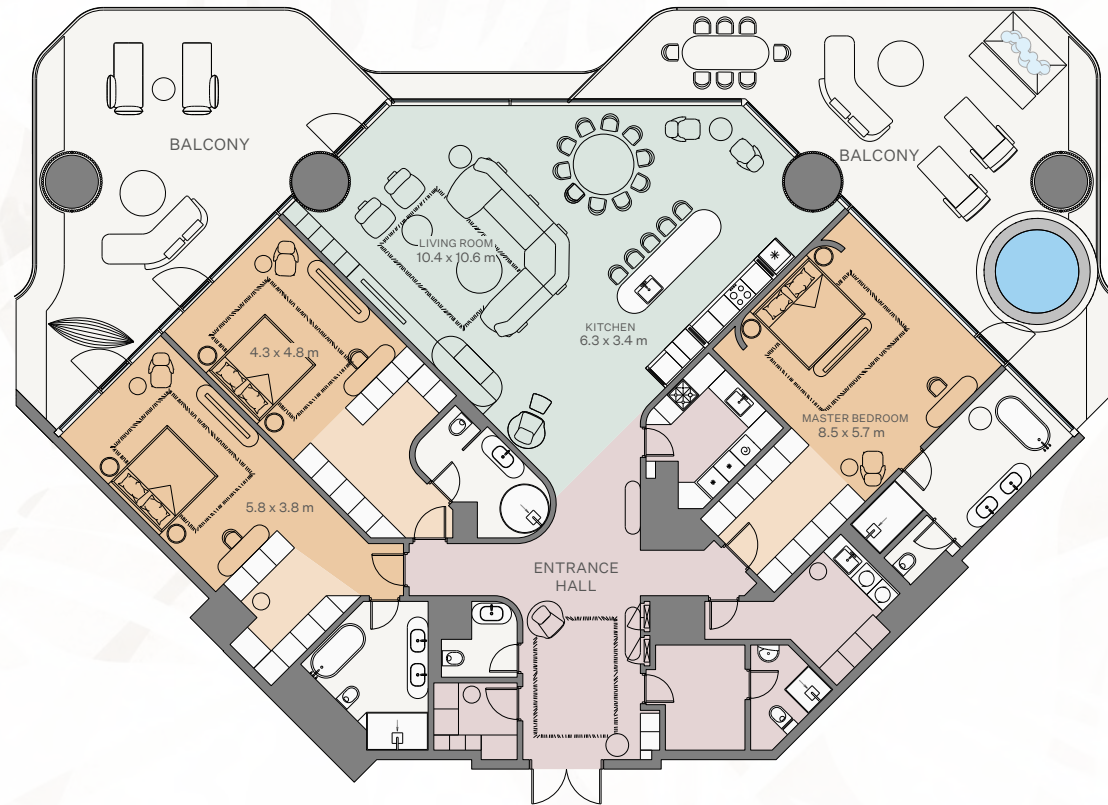
# Eyeza

DUBAI

## APARTMENT 1302

3 Bedroom | Type B

Internal area: 319.3 m<sup>2</sup> 3,437 ft<sup>2</sup>  
Balcony: 136.31 m<sup>2</sup> 1,467 ft<sup>2</sup>  
Total area: 455.61 m<sup>2</sup> 4,904 ft<sup>2</sup>



DISCLAIMER 1. All dimensions are in imperial and metric, and measured from finish to finish excluding construction tolerances. 2. All materials, dimensions and drawings are approximate only. 3. Information is subject to change without notice, at developer's absolute discretion. 4. Actual area may vary from the stated area. 5. Drawings not to scale. 6. All images used are for illustrative purposes only and do not represent the actual size, features, specifications, fittings and furnishing. 7. The developer reserves, the right to make revisions or alterations, at its absolute discretion, without any liability whatsoever.

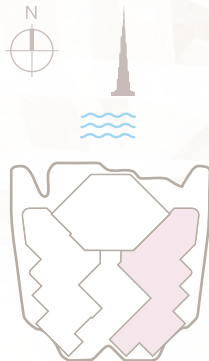
# Eyeza

DUBAI

## APARTMENT 1303

3 Bedroom | Type C

Internal area:	360.98 m <sup>2</sup>	3,886 ft <sup>2</sup>
Balcony:	136.39 m <sup>2</sup>	1,468 ft <sup>2</sup>
Total area:	497.37 m <sup>2</sup>	5,354 ft <sup>2</sup>



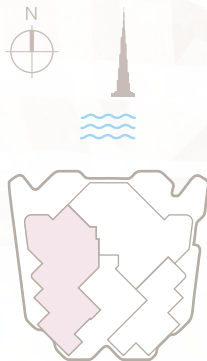
DISCLAIMER 1. All dimensions are in imperial and metric, and measured from finish to finish excluding construction tolerances. 2. All materials, dimensions and drawings are approximate only. 3. Information is subject to change without notice, at developer's absolute discretion. 4. Actual area may vary from the stated area. 5. Drawings not to scale. 6. All images used are for illustrative purposes only and do not represent the actual size, features, specifications, fittings and furnishing. 7. The developer reserves, the right to make revisions or alterations, at its absolute discretion, without any liability whatsoever.

BY R.EVOLUTION

# APARTMENT 1401

4 Bedroom | Type B

Internal area: 431.63 m<sup>2</sup> 4,646 ft<sup>2</sup>  
 Balcony: 171.61 m<sup>2</sup> 1,847 ft<sup>2</sup>  
 Total area: 603.24 m<sup>2</sup> 6,493 ft<sup>2</sup>

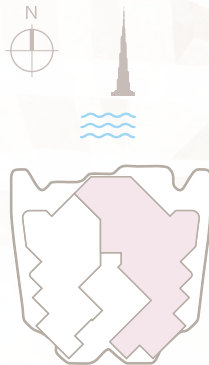


DISCLAIMER 1. All dimensions are in imperial and metric, and measured from finish to finish excluding construction tolerances. 2. All materials, dimensions and drawings are approximate only. 3. Information is subject to change without notice, at developer's absolute discretion. 4. Actual area may vary from the stated area. 5. Drawings not to scale. 6. All images used are for illustrative purposes only and do not represent the actual size, features, specifications, fittings and furnishing. 7. The developer reserves, the right to make revisions or alterations, at its absolute discretion, without any liability whatsoever.

# APARTMENT 1402

5 Bedroom | Type A

Internal area:	596.04 m <sup>2</sup>	6,416 ft <sup>2</sup>
Balcony:	228.88 m <sup>2</sup>	2,463 ft <sup>2</sup>
Total area:	824.92 m <sup>2</sup>	8,879 ft <sup>2</sup>

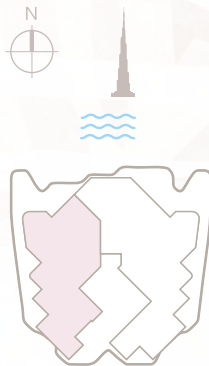


DISCLAIMER 1. All dimensions are in imperial and metric, and measured from finish to finish excluding construction tolerances. 2. All materials, dimensions and drawings are approximate only. 3. Information is subject to change without notice, at developer's absolute discretion. 4. Actual area may vary from the stated area. 5. Drawings not to scale. 6. All images used are for illustrative purposes only and do not represent the actual size, features, specifications, fittings and furnishing. 7. The developer reserves, the right to make revisions or alterations, at its absolute discretion, without any liability whatsoever.

# APARTMENT 1501

## 4 Bedroom | Type B

Internal area: 431.64 m<sup>2</sup> 4,646 ft<sup>2</sup>  
 Balcony: 177.85 m<sup>2</sup> 1,914 ft<sup>2</sup>  
 Total area: 609.49 m<sup>2</sup> 6,560 ft<sup>2</sup>



DISCLAIMER 1. All dimensions are in imperial and metric, and measured from finish to finish excluding construction tolerances. 2. All materials, dimensions and drawings are approximate only. 3. Information is subject to change without notice, at developer's absolute discretion. 4. Actual area may vary from the stated area. 5. Drawings not to scale. 6. All images used are for illustrative purposes only and do not represent the actual size, features, specifications, fittings and furnishing. 7. The developer reserves, the right to make revisions or alterations, at its absolute discretion, without any liability whatsoever.

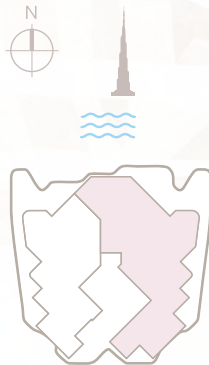
# Eyeza

DUBAI

## APARTMENT 1502

5 Bedroom | Type A

Internal area: 596.05 m<sup>2</sup> 6,416 ft<sup>2</sup>  
Balcony: 227.22 m<sup>2</sup> 2,446 ft<sup>2</sup>  
Total area: 823.27 m<sup>2</sup> 8,862 ft<sup>2</sup>

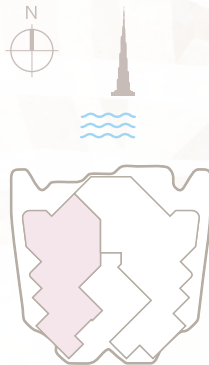


DISCLAIMER 1. All dimensions are in imperial and metric, and measured from finish to finish excluding construction tolerances. 2. All materials, dimensions and drawings are approximate only. 3. Information is subject to change without notice, at developer's absolute discretion. 4. Actual area may vary from the stated area. 5. Drawings not to scale. 6. All images used are for illustrative purposes only and do not represent the actual size, features, specifications, fittings and furnishing. 7. The developer reserves, the right to make revisions or alterations, at its absolute discretion, without any liability whatsoever.

# APARTMENT 1601

## 4 Bedroom | Type B

Internal area: 431.63 m<sup>2</sup> 4,646 ft<sup>2</sup>  
 Balcony: 159.39 m<sup>2</sup> 1,716 ft<sup>2</sup>  
 Total area: 591.02 m<sup>2</sup> 6,362 ft<sup>2</sup>



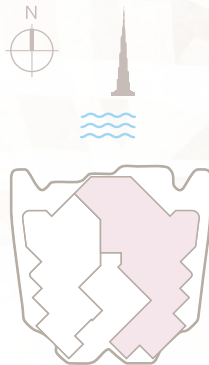
DISCLAIMER 1. All dimensions are in imperial and metric, and measured from finish to finish excluding construction tolerances. 2. All materials, dimensions and drawings are approximate only. 3. Information is subject to change without notice, at developer's absolute discretion. 4. Actual area may vary from the stated area. 5. Drawings not to scale. 6. All images used are for illustrative purposes only and do not represent the actual size, features, specifications, fittings and furnishing. 7. The developer reserves, the right to make revisions or alterations, at its absolute discretion, without any liability whatsoever.



# APARTMENT 1602

## 5 Bedroom | Type A

Internal area: 596.06 m<sup>2</sup> 6,416 ft<sup>2</sup>  
 Balcony: 224.23 m<sup>2</sup> 2,414 ft<sup>2</sup>  
 Total area: 820.29 m<sup>2</sup> 8,830 ft<sup>2</sup>

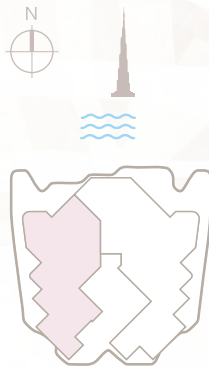


DISCLAIMER 1. All dimensions are in imperial and metric, and measured from finish to finish excluding construction tolerances. 2. All materials, dimensions and drawings are approximate only. 3. Information is subject to change without notice, at developer's absolute discretion. 4. Actual area may vary from the stated area. 5. Drawings not to scale. 6. All images used are for illustrative purposes only and do not represent the actual size, features, specifications, fittings and furnishing. 7. The developer reserves, the right to make revisions or alterations, at its absolute discretion, without any liability whatsoever.

# APARTMENT 1701

4 Bedroom | Type B

Internal area:	431.65 m <sup>2</sup>	4,646 ft <sup>2</sup>
Balcony:	165.6 m <sup>2</sup>	1,783 ft <sup>2</sup>
Total area:	597.25 m <sup>2</sup>	6,429 ft <sup>2</sup>



DISCLAIMER 1. All dimensions are in imperial and metric, and measured from finish to finish excluding construction tolerances. 2. All materials, dimensions and drawings are approximate only. 3. Information is subject to change without notice, at developer's absolute discretion. 4. Actual area may vary from the stated area. 5. Drawings not to scale. 6. All images used are for illustrative purposes only and do not represent the actual size, features, specifications, fittings and furnishing. 7. The developer reserves, the right to make revisions or alterations, at its absolute discretion, without any liability whatsoever.

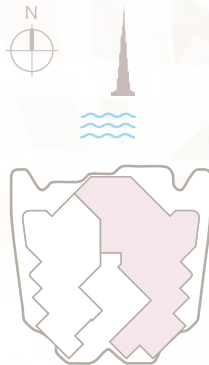
# Eyeza

DUBAI

## APARTMENT 1702

5 Bedroom | Type A

Internal area:	596.09 m <sup>2</sup>	6,416 ft <sup>2</sup>
Balcony:	252.07 m <sup>2</sup>	2,714 ft <sup>2</sup>
Total area:	848.16 m <sup>2</sup>	9,130 ft <sup>2</sup>



DISCLAIMER 1. All dimensions are in imperial and metric, and measured from finish to finish excluding construction tolerances. 2. All materials, dimensions and drawings are approximate only. 3. Information is subject to change without notice, at developer's absolute discretion. 4. Actual area may vary from the stated area. 5. Drawings not to scale. 6. All images used are for illustrative purposes only and do not represent the actual size, features, specifications, fittings and furnishing. 7. The developer reserves, the right to make revisions or alterations, at its absolute discretion, without any liability whatsoever.

# Eyeza

DUBAI

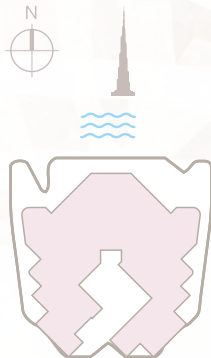
## PENTHOUSE 1801

5 Bedroom | Type B

Internal area: 1029.83 m<sup>2</sup> 11,085 ft<sup>2</sup>

Balcony: 438.43 m<sup>2</sup> 4,719 ft<sup>2</sup>

Total area: 1468.26 m<sup>2</sup> 15,804 ft<sup>2</sup>



DISCLAIMER 1. All dimensions are in imperial and metric, and measured from finish to finish excluding construction tolerances. 2. All materials, dimensions and drawings are approximate only. 3. Information is subject to change without notice, at developer's absolute discretion. 4. Actual area may vary from the stated area. 5. Drawings not to scale. 6. All images used are for illustrative purposes only and do not represent the actual size, features, specifications, fittings and furnishing. 7. The developer reserves the right to make revisions or alterations, at its absolute discretion, without any liability whatsoever.

# Eyeza

DUBAI

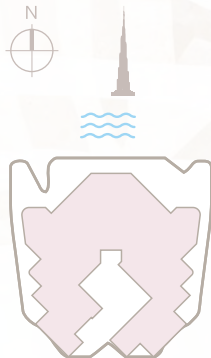
## PENTHOUSE 1901

3 Bedroom | Type B

Internal area: 1029.66 m<sup>2</sup> 11,083 ft<sup>2</sup>

Balcony: 441.33 m<sup>2</sup> 4,751 ft<sup>2</sup>

Total area: 1,470.99 m<sup>2</sup> 15,834 ft<sup>2</sup>



DISCLAIMER 1. All dimensions are in imperial and metric, and measured from finish to finish excluding construction tolerances. 2. All materials, dimensions and drawings are approximate only. 3. Information is subject to change without notice, at developer's absolute discretion. 4. Actual area may vary from the stated area. 5. Drawings not to scale. 6. All images used are for illustrative purposes only and do not represent the actual size, features, specifications, fittings and furnishing. 7. The developer reserves the right to make revisions or alterations, at its absolute discretion, without any liability whatsoever.