

# DIFC Living

## FLOOR PLAN

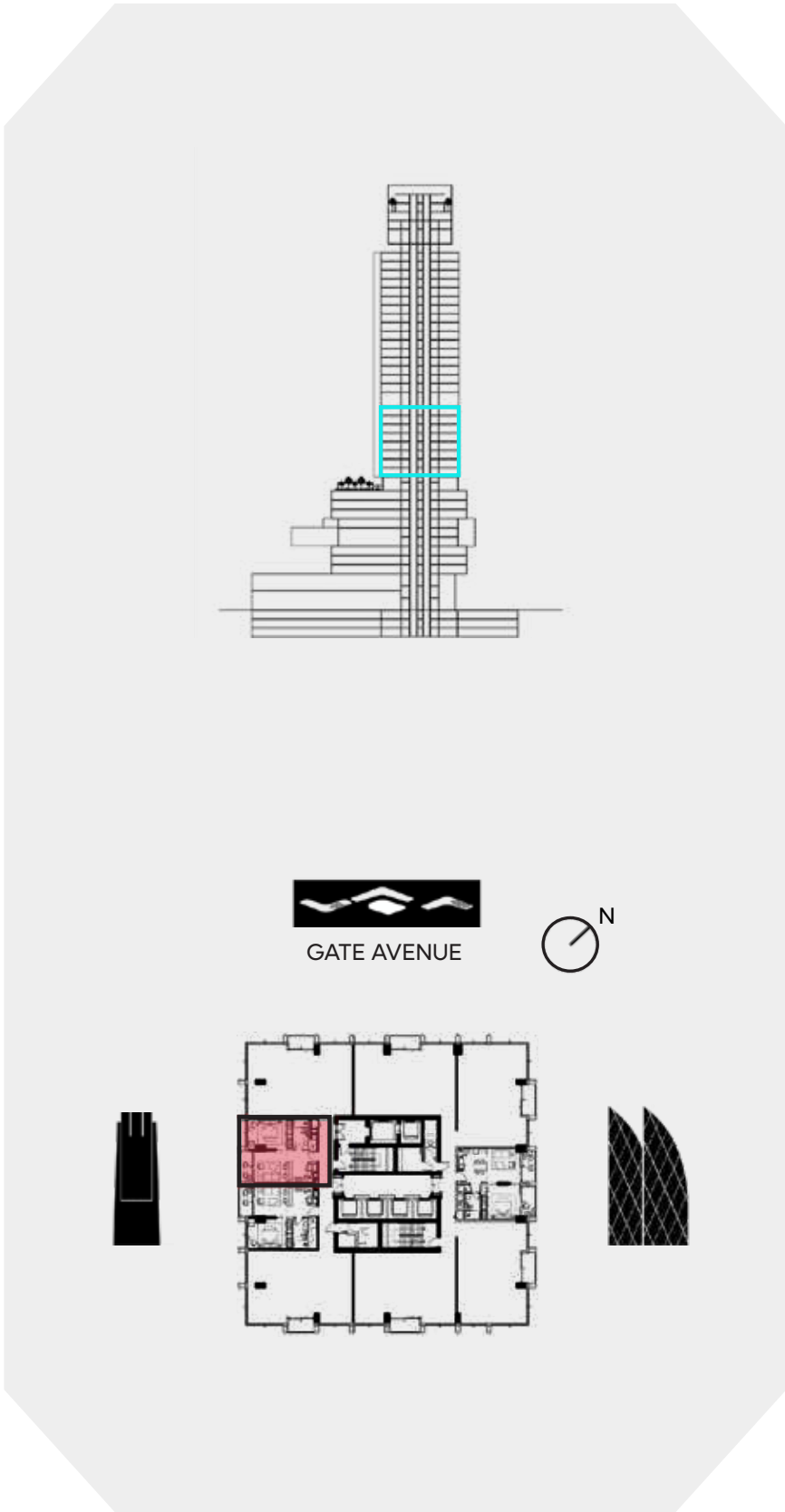


# 1 BEDROOM A

LEVEL 10-17

**UNIT AREA**

INTERNAL AREA	54.93 SQ.M.	591.26 SQ.FT.
EXTERNAL AREA	5.59 SQ.M.	60.17 SQ.FT.
<b>TOTAL AREA</b>	<b>60.52 SQ.M.</b>	<b>651.43 SQ.FT.</b>



**DISCLAIMER:**

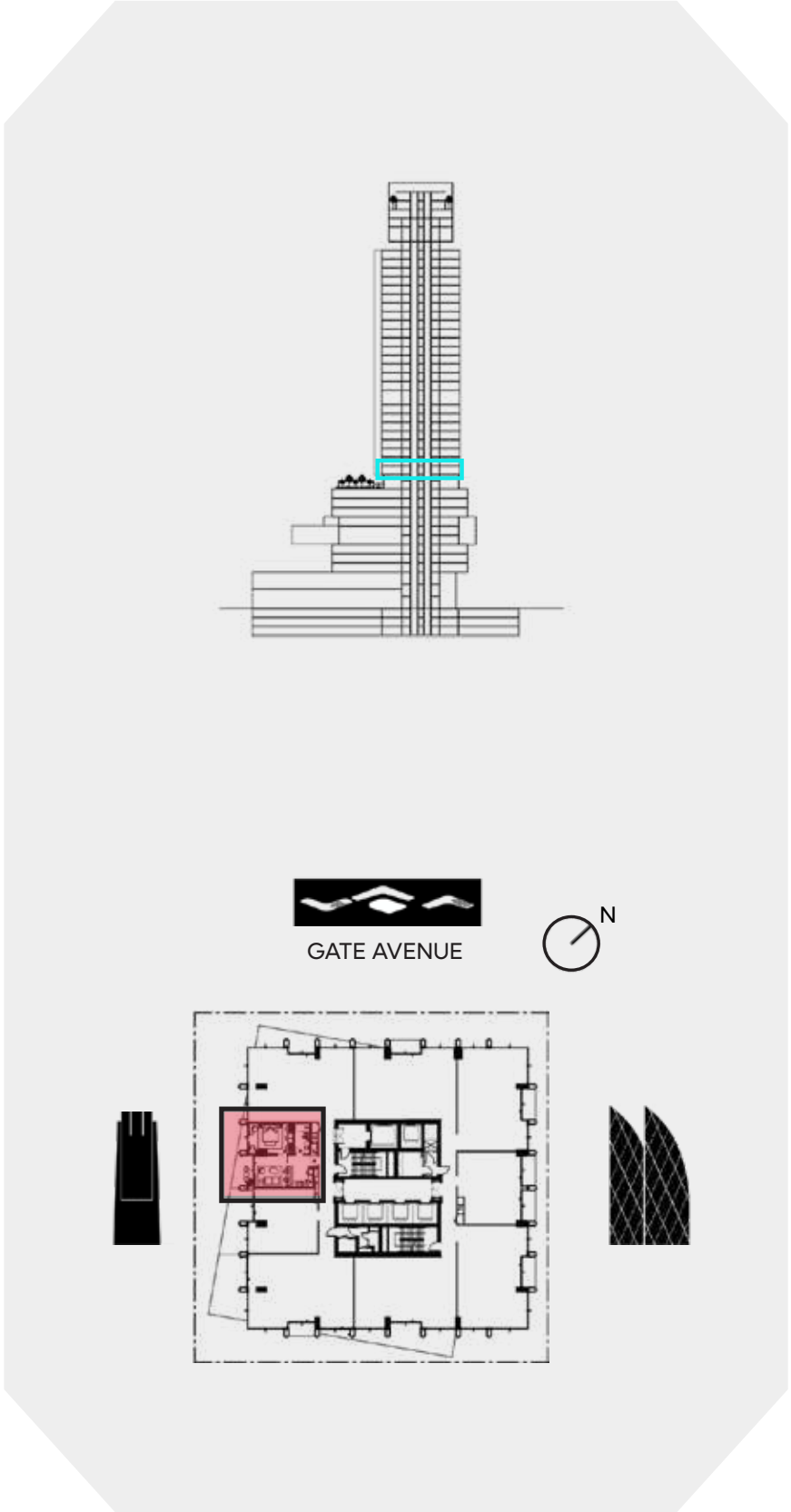
All measurements are indicative and are for marketing purposes only. All efforts have been made to ensure their accuracy, however these layouts are subject to change at the discretion of the developer and should not be relied upon as final. The actual area may vary from the stated area and the developer reserves the right to make the revisions/alterations, at its absolute discretion, without any liability whatsoever.

# 1 BEDROOM A1

LEVEL 10

**UNIT AREA**

INTERNAL AREA	54.93 SQ.M.	591.26 SQ.FT.
EXTERNAL AREA	11.67 SQ.M.	125.61 SQ.FT.
<b>TOTAL AREA</b>	<b>66.59 SQ.M.</b>	<b>716.87 SQ.FT.</b>



## DISCLAIMER:

All measurements are indicative and are for marketing purposes only. All efforts have been made to ensure their accuracy, however these layouts are subject to change at the discretion of the developer and should not be relied upon as final. The actual area may vary from the stated area and the developer reserves the right to make the revisions/alterations, at its absolute discretion, without any liability whatsoever.

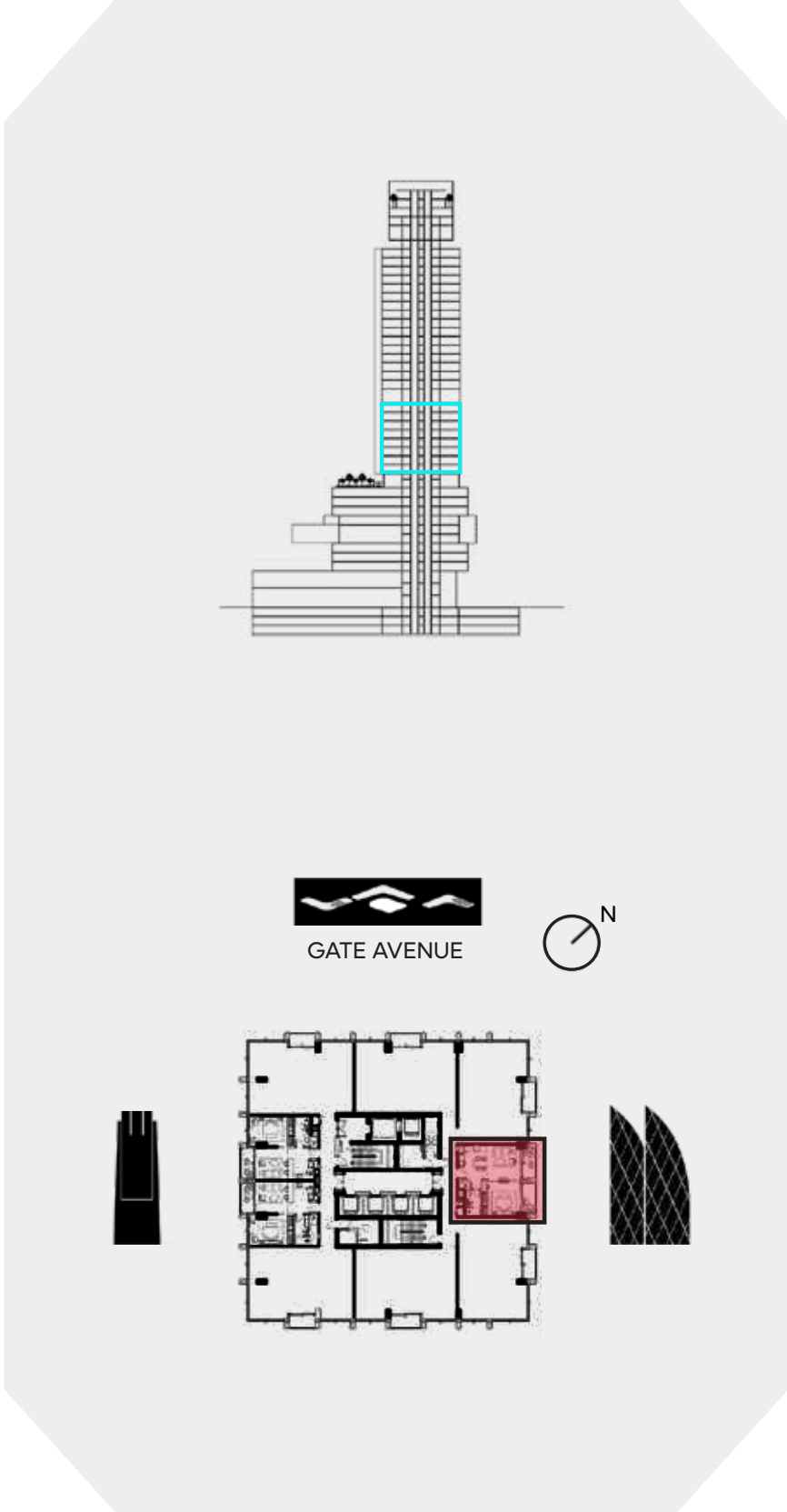


# 1 BEDROOM B

LEVEL 10-17

**UNIT AREA**

INTERNAL AREA	58.36 SQ.M.	628.18 SQ.FT.
EXTERNAL AREA	11.69 SQ.M.	125.82 SQ.FT.
<b>TOTAL AREA</b>	<b>70.05 SQ.M.</b>	<b>754.00 SQ.FT.</b>



**DISCLAIMER:**

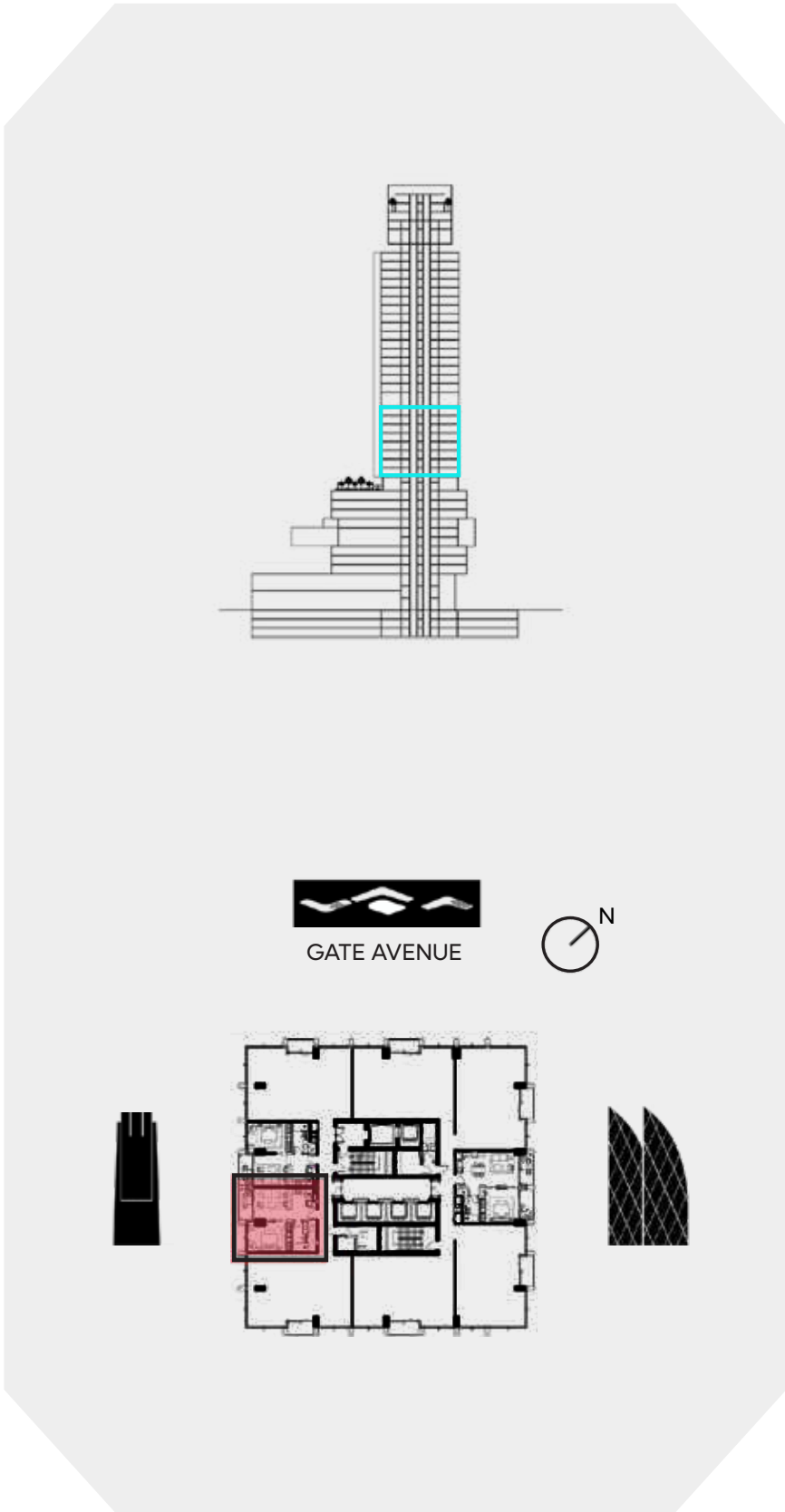
All measurements are indicative and are for marketing purposes only. All efforts have been made to ensure their accuracy, however these layouts are subject to change at the discretion of the developer and should not be relied upon as final. The actual area may vary from the stated area and the developer reserves the right to make the revisions/alterations, at its absolute discretion, without any liability whatsoever.

# 1 BEDROOM C

LEVEL 10-17

**UNIT AREA**

INTERNAL AREA	54.28 SQ.M.	584.26 SQ.FT.
EXTERNAL AREA	5.59 SQ.M.	60.17 SQ.FT.
<b>TOTAL AREA</b>	<b>59.87 SQ.M.</b>	<b>644.43 SQ.FT.</b>



**DISCLAIMER:**

All measurements are indicative and are for marketing purposes only. All efforts have been made to ensure their accuracy, however these layouts are subject to change at the discretion of the developer and should not be relied upon as final. The actual area may vary from the stated area and the developer reserves the right to make the revisions/alterations, at its absolute discretion, without any liability whatsoever.

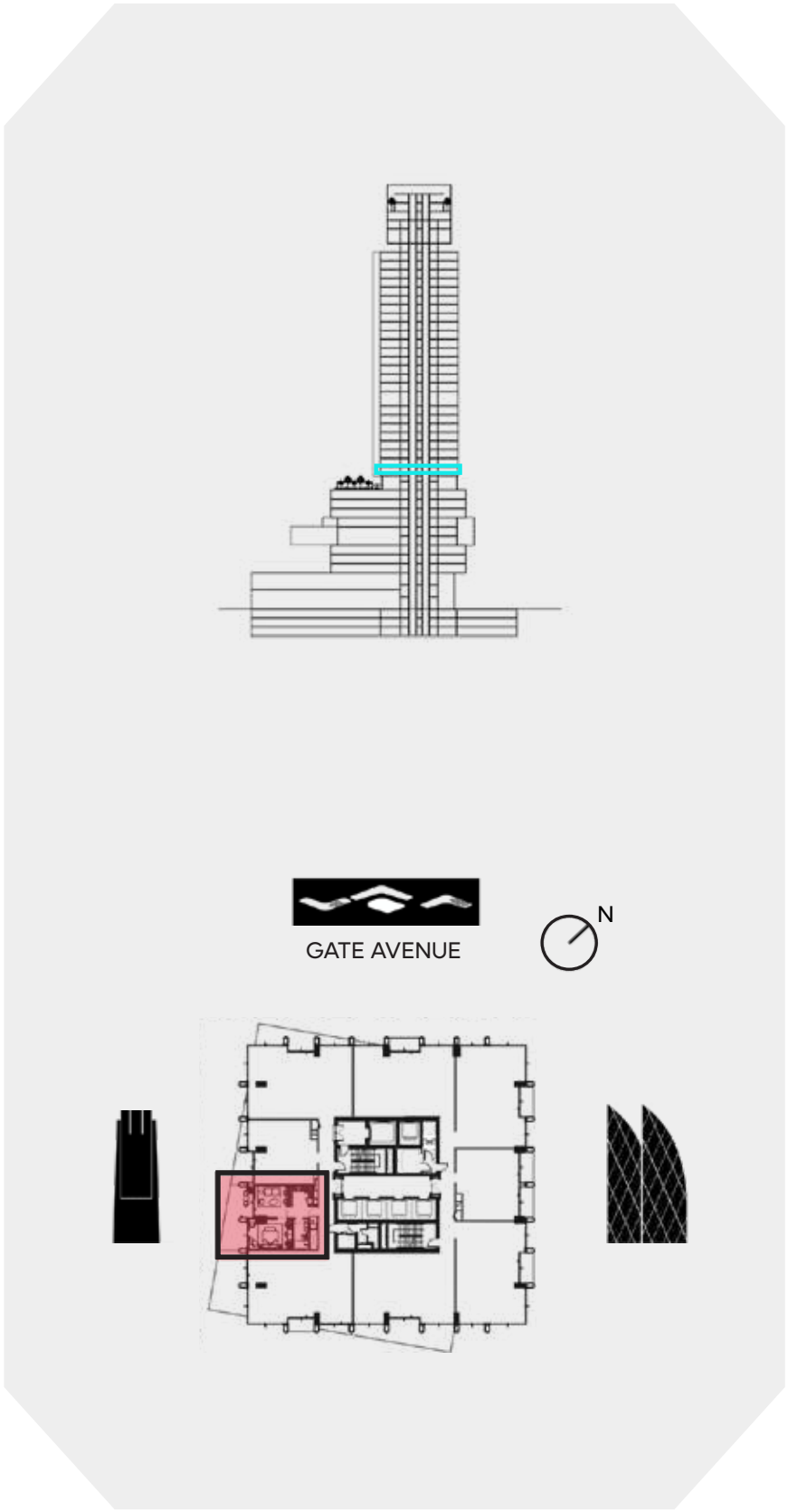


# 1 BEDROOM C1

LEVEL 10

**UNIT AREA**

INTERNAL AREA	54.29 SQ.M.	584.37	SQ.FT.
EXTERNAL AREA	21.52 SQ.M.	231.63	SQ.FT.
<b>TOTAL AREA</b>	<b>75.81 SQ.M.</b>	<b>816.00</b>	<b>SQ.FT.</b>



**DISCLAIMER:**

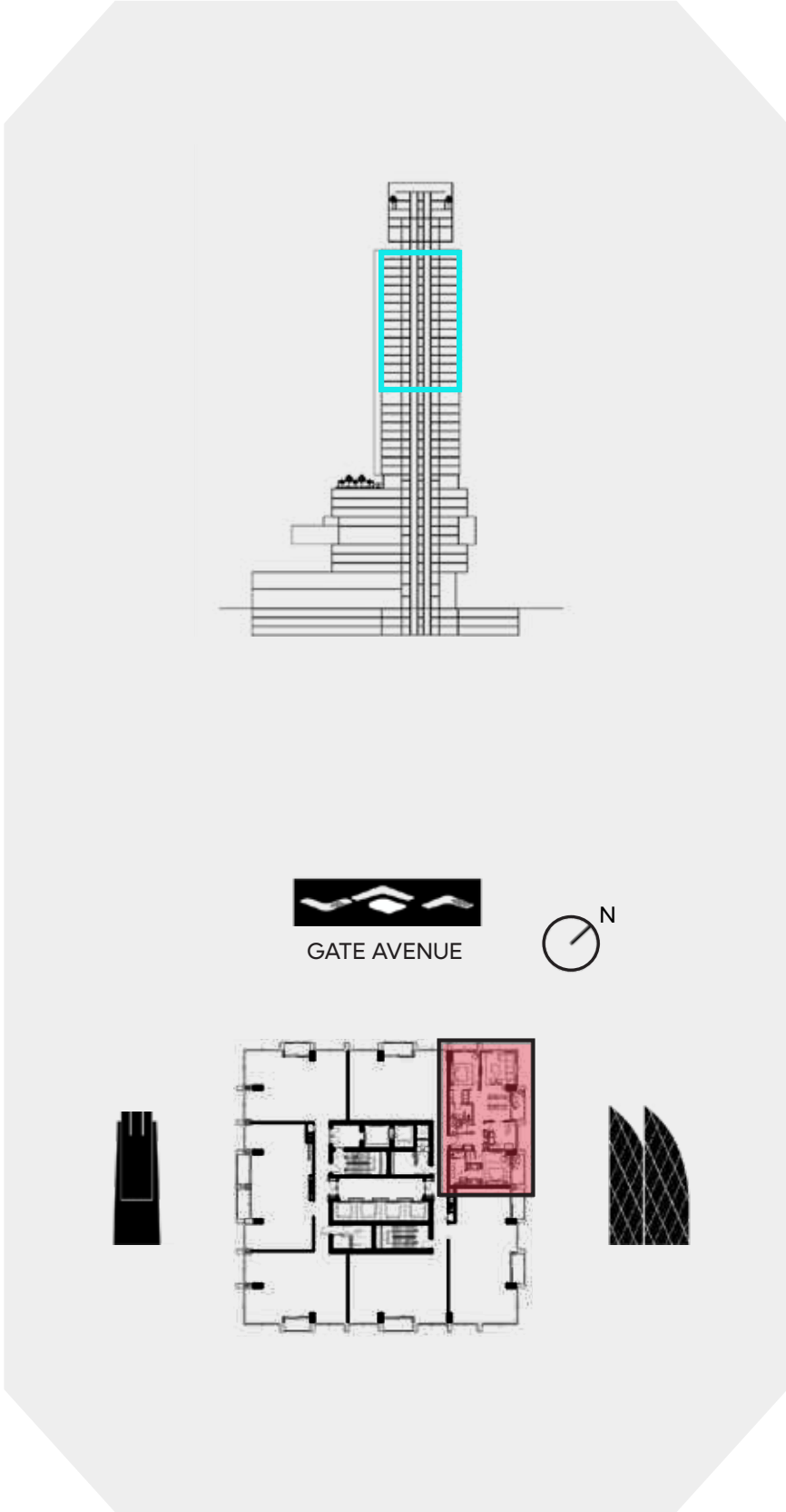
All measurements are indicative and are for marketing purposes only. All efforts have been made to ensure their accuracy, however these layouts are subject to change at the discretion of the developer and should not be relied upon as final. The actual area may vary from the stated area and the developer reserves the right to make the revisions/alterations, at its absolute discretion, without any liability whatsoever.

# 2 BEDROOM A

LEVEL 19-34

**UNIT AREA**

INTERNAL AREA	121.04 SQ.M.	1,302.86 SQ.FT.
EXTERNAL AREA	11.45 SQ.M.	123.24 SQ.FT.
<b>TOTAL AREA</b>	<b>132.49 SQ.M.</b>	<b>1,426.10 SQ.FT.</b>



**DISCLAIMER:**

All measurements are indicative and are for marketing purposes only. All efforts have been made to ensure their accuracy, however these layouts are subject to change at the discretion of the developer and should not be relied upon as final. The actual area may vary from the stated area and the developer reserves the right to make the revisions/alterations, at its absolute discretion, without any liability whatsoever.

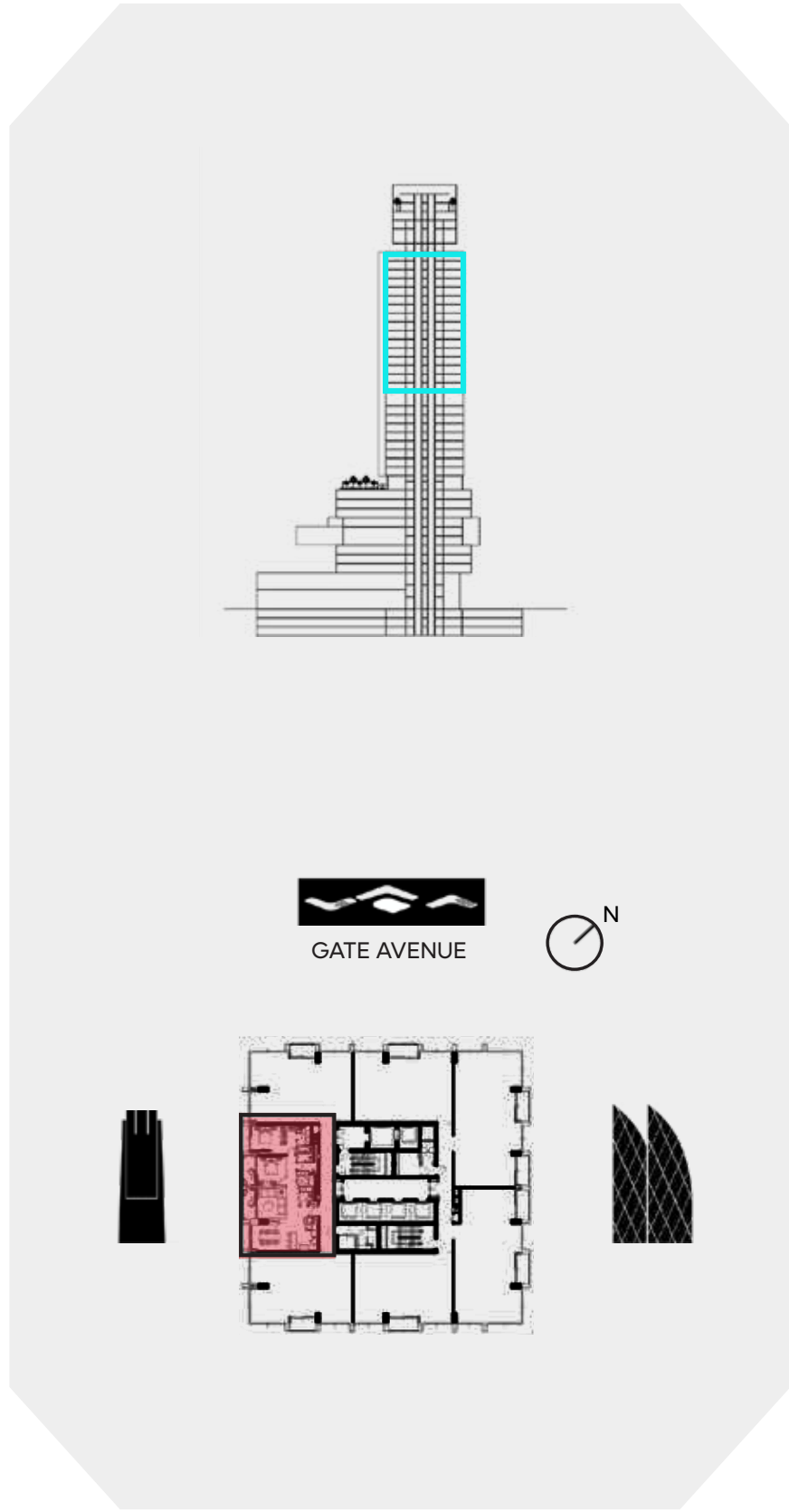


# 2 BEDROOM B

LEVEL 19-34

**UNIT AREA**

INTERNAL AREA	107.56 SQ.M.	1,157.76	SQ.FT.
EXTERNAL AREA	11.08 SQ.M.	119.26	SQ.FT.
<b>TOTAL AREA</b>	<b>118.64 SQ.M.</b>	<b>1,277.02</b>	<b>SQ.FT.</b>



**DISCLAIMER:**

All measurements are indicative and are for marketing purposes only. All efforts have been made to ensure their accuracy, however these layouts are subject to change at the discretion of the developer and should not be relied upon as final. The actual area may vary from the stated area and the developer reserves the right to make the revisions/alterations, at its absolute discretion, without any liability whatsoever.

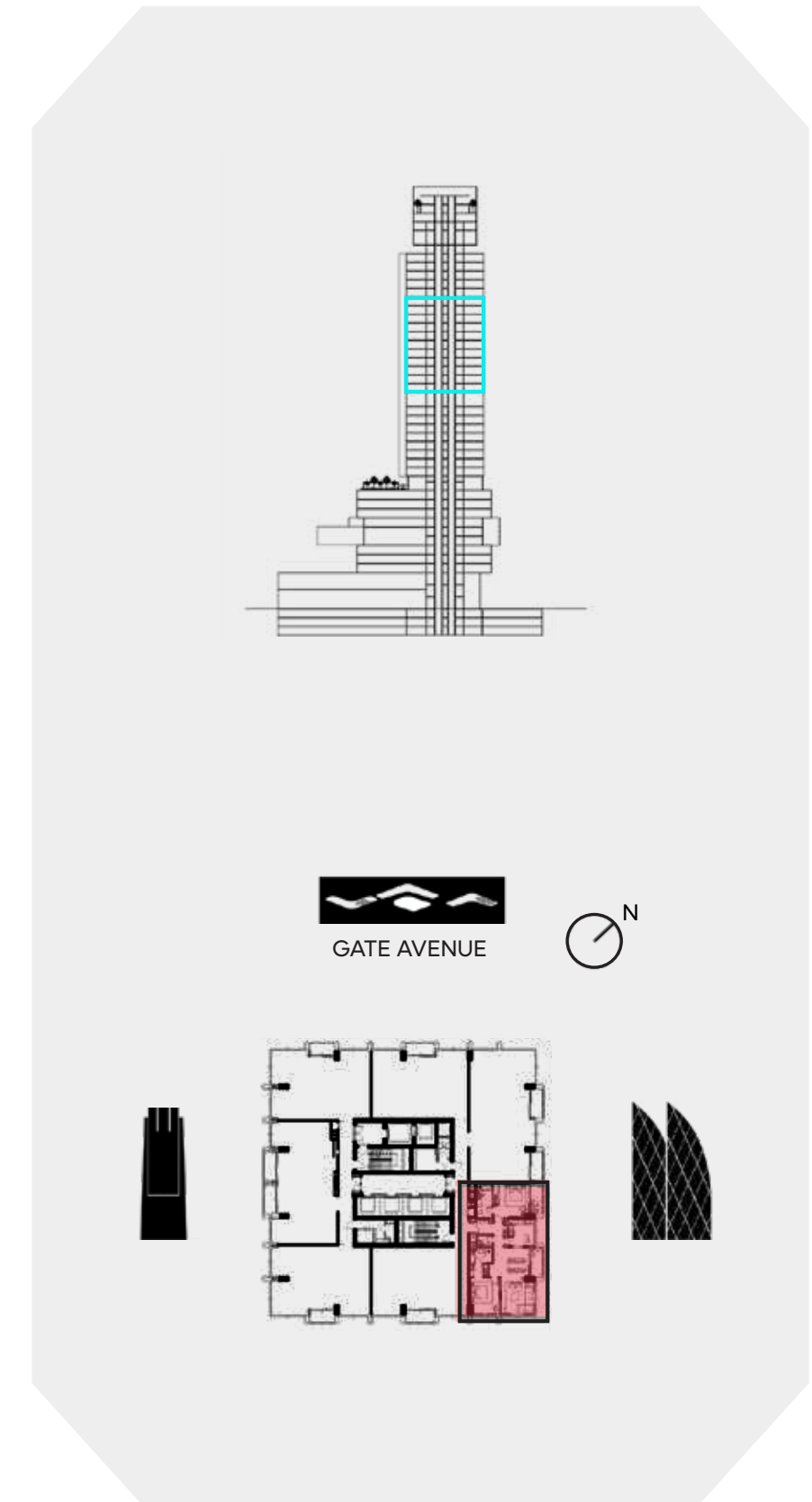


# 2 BEDROOM C

LEVEL 19-29

**UNIT AREA**

INTERNAL AREA	117.08 SQ.M.	1,260.23 SQ.FT.
EXTERNAL AREA	11.41 SQ.M.	122.81 SQ.FT.
<b>TOTAL AREA</b>	<b>128.49 SQ.M.</b>	<b>1,383.04 SQ.FT.</b>



## DISCLAIMER:

All measurements are indicative and are for marketing purposes only. All efforts have been made to ensure their accuracy, however these layouts are subject to change at the discretion of the developer and should not be relied upon as final. The actual area may vary from the stated area and the developer reserves the right to make the revisions/alterations, at its absolute discretion, without any liability whatsoever.

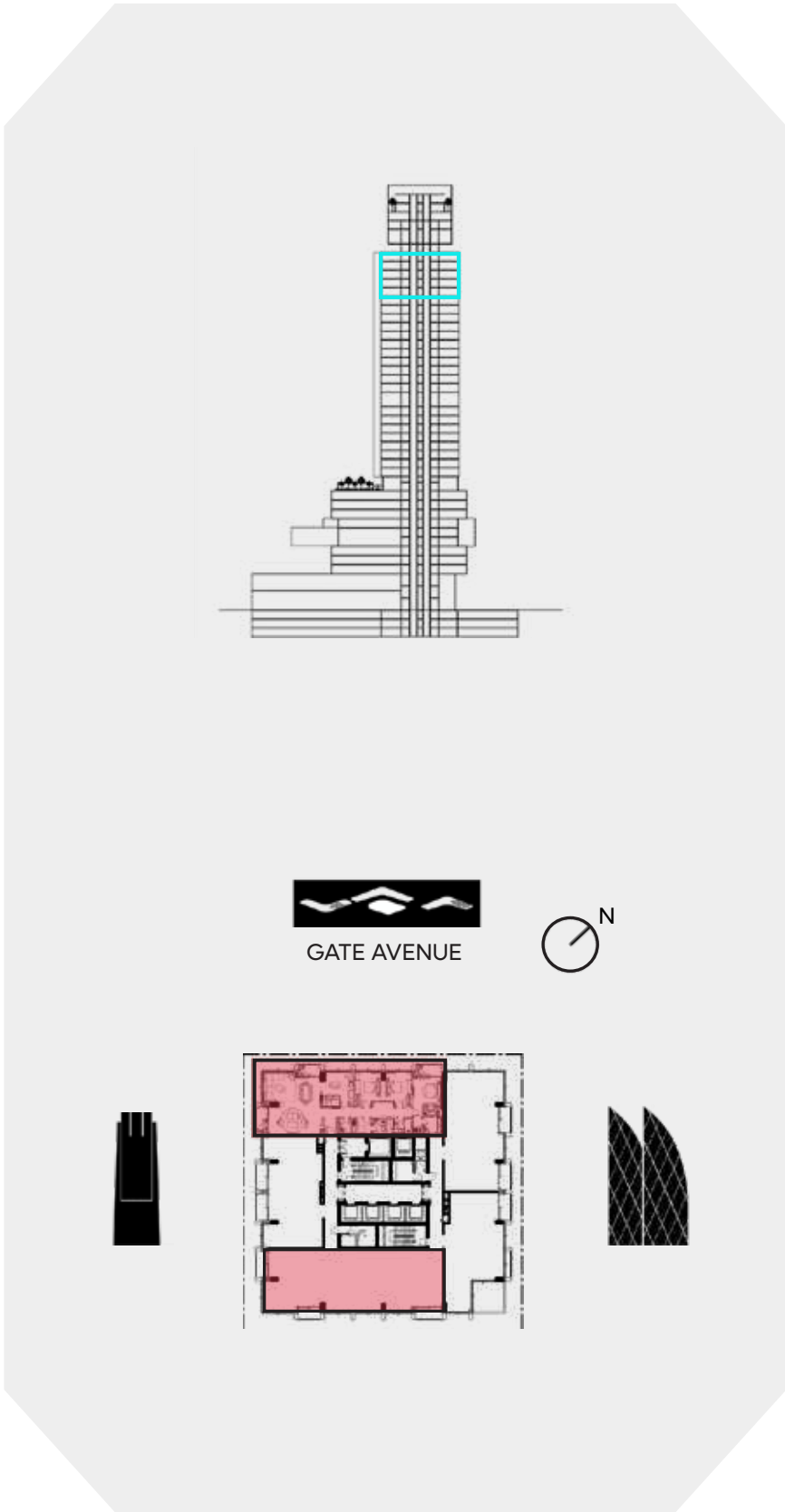


# 3 BEDROOM A

LEVEL 31-34

**UNIT AREA**

INTERNAL AREA	189.24 SQ.M.	2,036.96 SQ.FT.
EXTERNAL AREA	16.22 SQ.M.	174.59 SQ.FT.
<b>TOTAL AREA</b>	<b>205.46 SQ.M.</b>	<b>2,211.55 SQ.FT.</b>



**DISCLAIMER:**

All measurements are indicative and are for marketing purposes only. All efforts have been made to ensure their accuracy, however these layouts are subject to change at the discretion of the developer and should not be relied upon as final. The actual area may vary from the stated area and the developer reserves the right to make the revisions/alterations, at its absolute discretion, without any liability whatsoever.

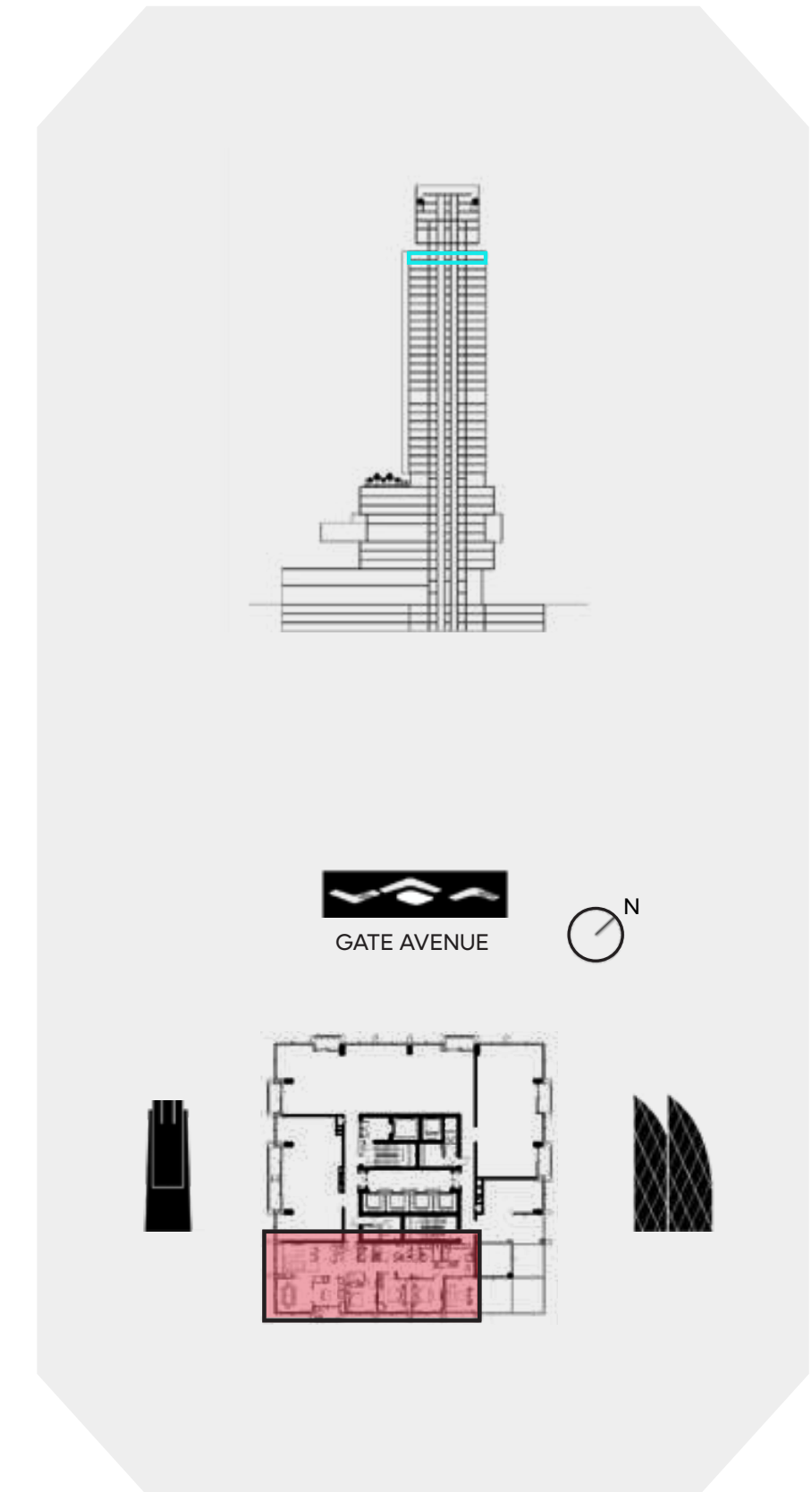


# 3 BEDROOM B

LEVEL 34

**UNIT AREA**

INTERNAL AREA	178.78 SQ.M.	1,924.37 SQ.FT.
EXTERNAL AREA	22.07 SQ.M.	237.55 SQ.FT.
<b>TOTAL AREA</b>	<b>200.85 SQ.M.</b>	<b>2,161.92 SQ.FT.</b>



## DISCLAIMER:

All measurements are indicative and are for marketing purposes only. All efforts have been made to ensure their accuracy, however these layouts are subject to change at the discretion of the developer and should not be relied upon as final. The actual area may vary from the stated area and the developer reserves the right to make the revisions/alterations, at its absolute discretion, without any liability whatsoever.

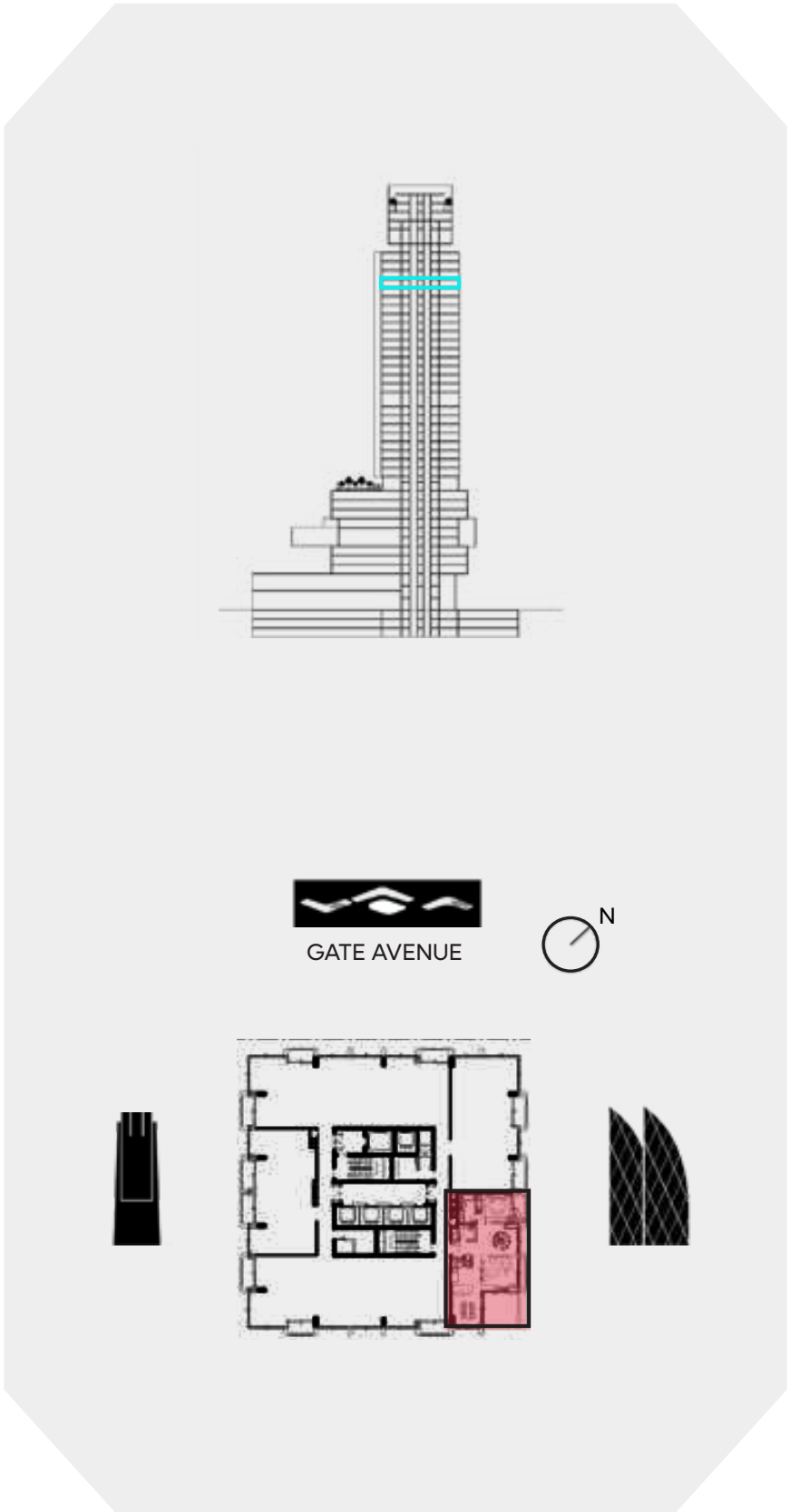


# 3 BEDROOM LOFT

LOWER LEVEL  
LEVEL 31

**UNIT AREA**

INTERNAL AREA	189.42 SQ.M.	2,038.89 SQ.FT.
EXTERNAL AREA	32.52 SQ.M.	350.04 SQ.FT.
<b>TOTAL AREA</b>	<b>221.94 SQ.M.</b>	<b>2,388.93 SQ.FT.</b>



**DISCLAIMER:**

All measurements are indicative and are for marketing purposes only. All efforts have been made to ensure their accuracy, however these layouts are subject to change at the discretion of the developer and should not be relied upon as final. The actual area may vary from the stated area and the developer reserves the right to make the revisions/alterations, at its absolute discretion, without any liability whatsoever.

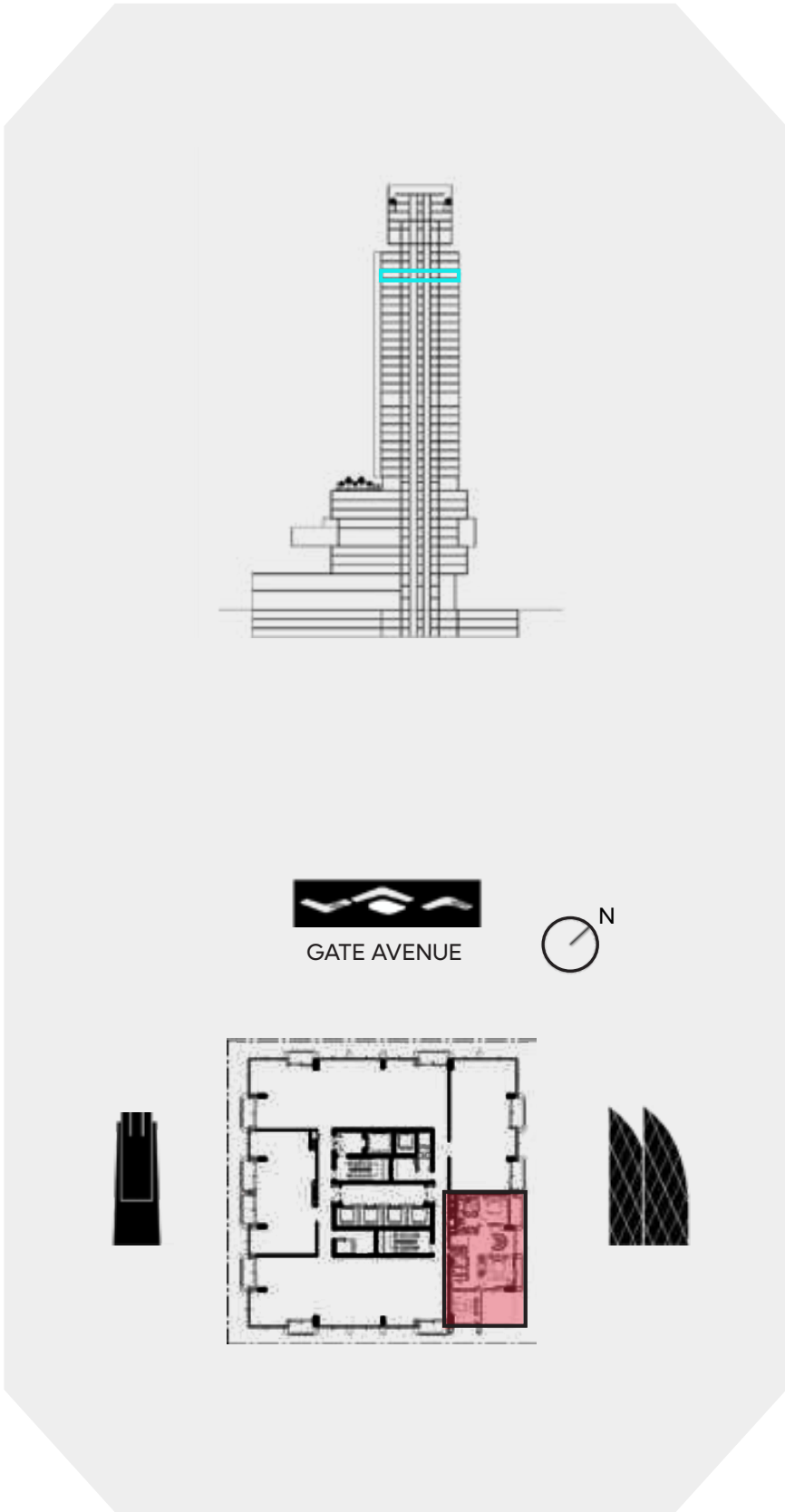


# 3 BEDROOM LOFT

UPPER LEVEL  
LEVEL 32

**UNIT AREA**

INTERNAL AREA	189.42 SQ.M.	2,038.89	SQ.FT.
EXTERNAL AREA	32.52 SQ.M.	350.04	SQ.FT.
<b>TOTAL AREA</b>	<b>221.94 SQ.M.</b>	<b>2,388.93</b>	<b>SQ.FT.</b>



**DISCLAIMER:**

All measurements are indicative and are for marketing purposes only. All efforts have been made to ensure their accuracy, however these layouts are subject to change at the discretion of the developer and should not be relied upon as final. The actual area may vary from the stated area and the developer reserves the right to make the revisions/alterations, at its absolute discretion, without any liability whatsoever.

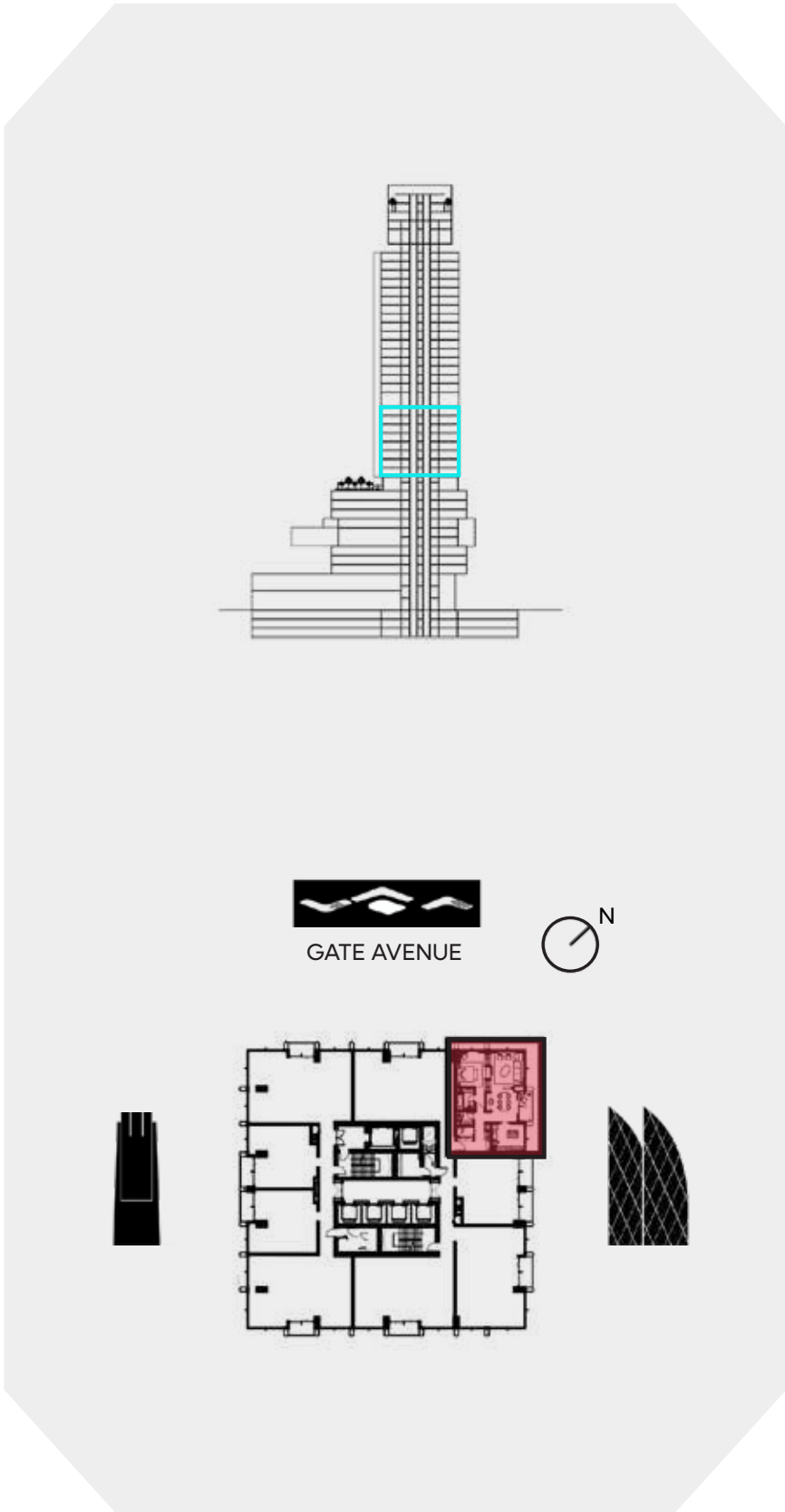


# EXECUTIVE 1 BEDROOM A

LEVEL 10-17

**UNIT AREA**

INTERNAL AREA	90.38 SQ.M.	972.84	SQ.FT.
EXTERNAL AREA	5.72 SQ.M.	61.56	SQ.FT.
<b>TOTAL AREA</b>	<b>96.10 SQ.M.</b>	<b>1,034.40</b>	<b>SQ.FT.</b>



**DISCLAIMER:**

All measurements are indicative and are for marketing purposes only. All efforts have been made to ensure their accuracy, however these layouts are subject to change at the discretion of the developer and should not be relied upon as final. The actual area may vary from the stated area and the developer reserves the right to make the revisions/alterations, at its absolute discretion, without any liability whatsoever.

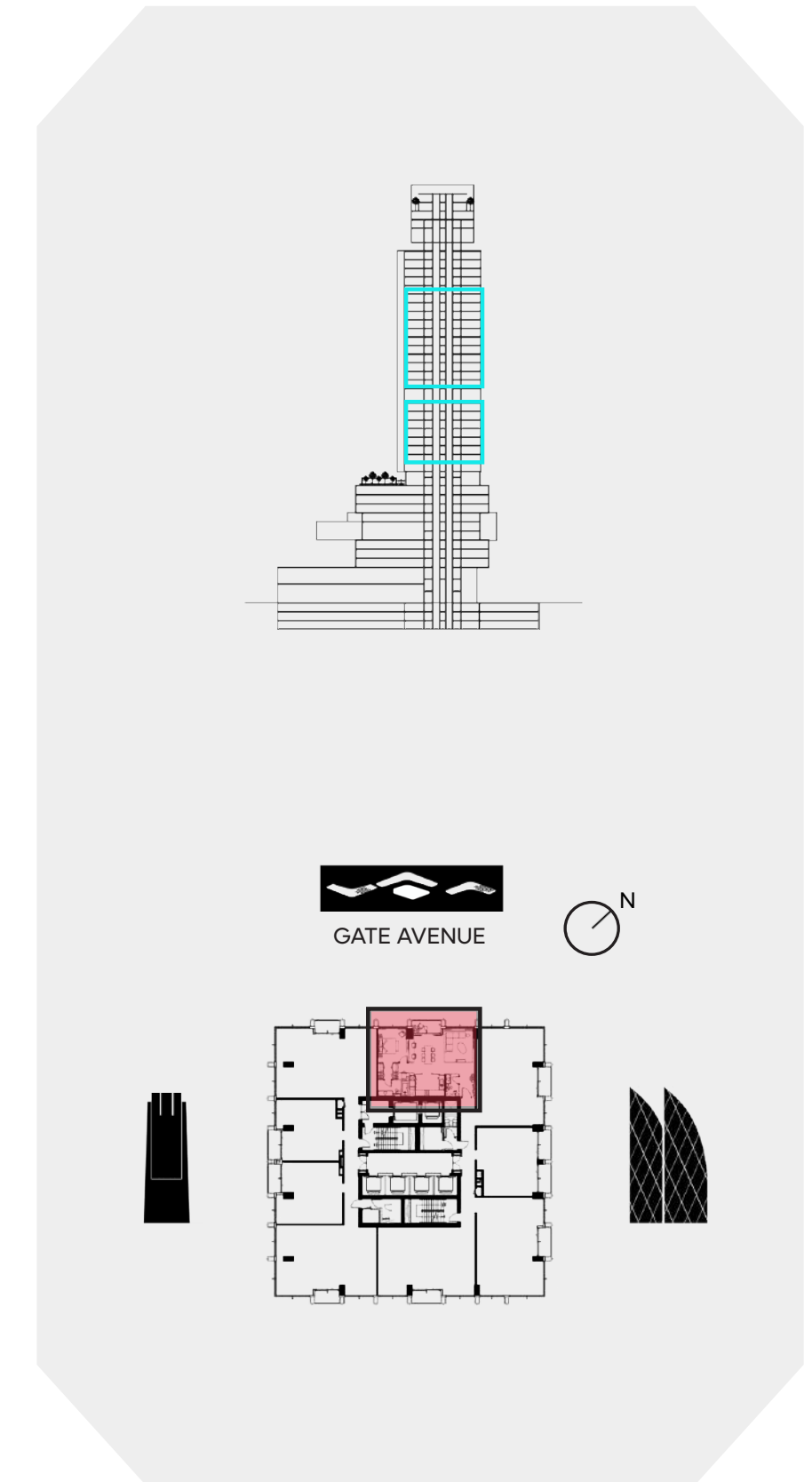


# EXECUTIVE 1 BEDROOM B

LEVEL 11-17  
LEVEL 19-30

**UNIT AREA**

INTERNAL AREA	93.60 SQ.M.	1,007.50	SQ.FT.
EXTERNAL AREA	5.70 SQ.M.	61.35	SQ.FT.
<b>TOTAL AREA</b>	<b>99.30 SQ.M.</b>	<b>1,068.85</b>	<b>SQ.FT.</b>



## DISCLAIMER:

All measurements are indicative and are for marketing purposes only. All efforts have been made to ensure their accuracy, however these layouts are subject to change at the discretion of the developer and should not be relied upon as final. The actual area may vary from the stated area and the developer reserves the right to make the revisions/alterations, at its absolute discretion, without any liability whatsoever.

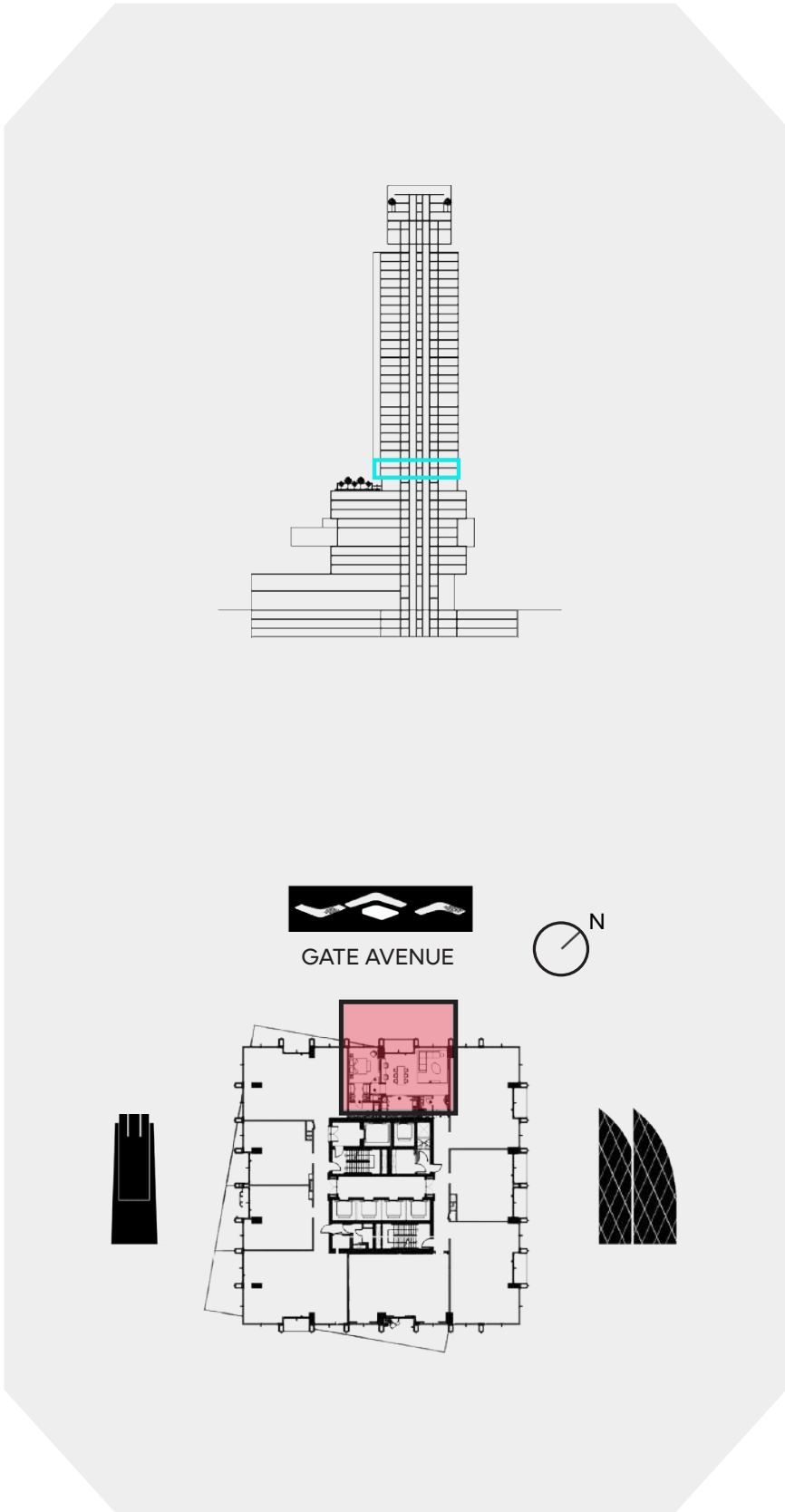


# EXECUTIVE 1 BEDROOM B1

LEVEL 10

**UNIT AREA**

INTERNAL AREA	93.60 SQ.M.	1,007.50 SQ.FT.
EXTERNAL AREA	6.66 SQ.M.	71.68 SQ.FT.
<b>TOTAL AREA</b>	<b>100.26 SQ.M.</b>	<b>1,079.18 SQ.FT.</b>



**DISCLAIMER:**

All measurements are indicative and are for marketing purposes only. All efforts have been made to ensure their accuracy, however these layouts are subject to change at the discretion of the developer and should not be relied upon as final. The actual area may vary from the stated area and the developer reserves the right to make the revisions/alterations, at its absolute discretion, without any liability whatsoever.

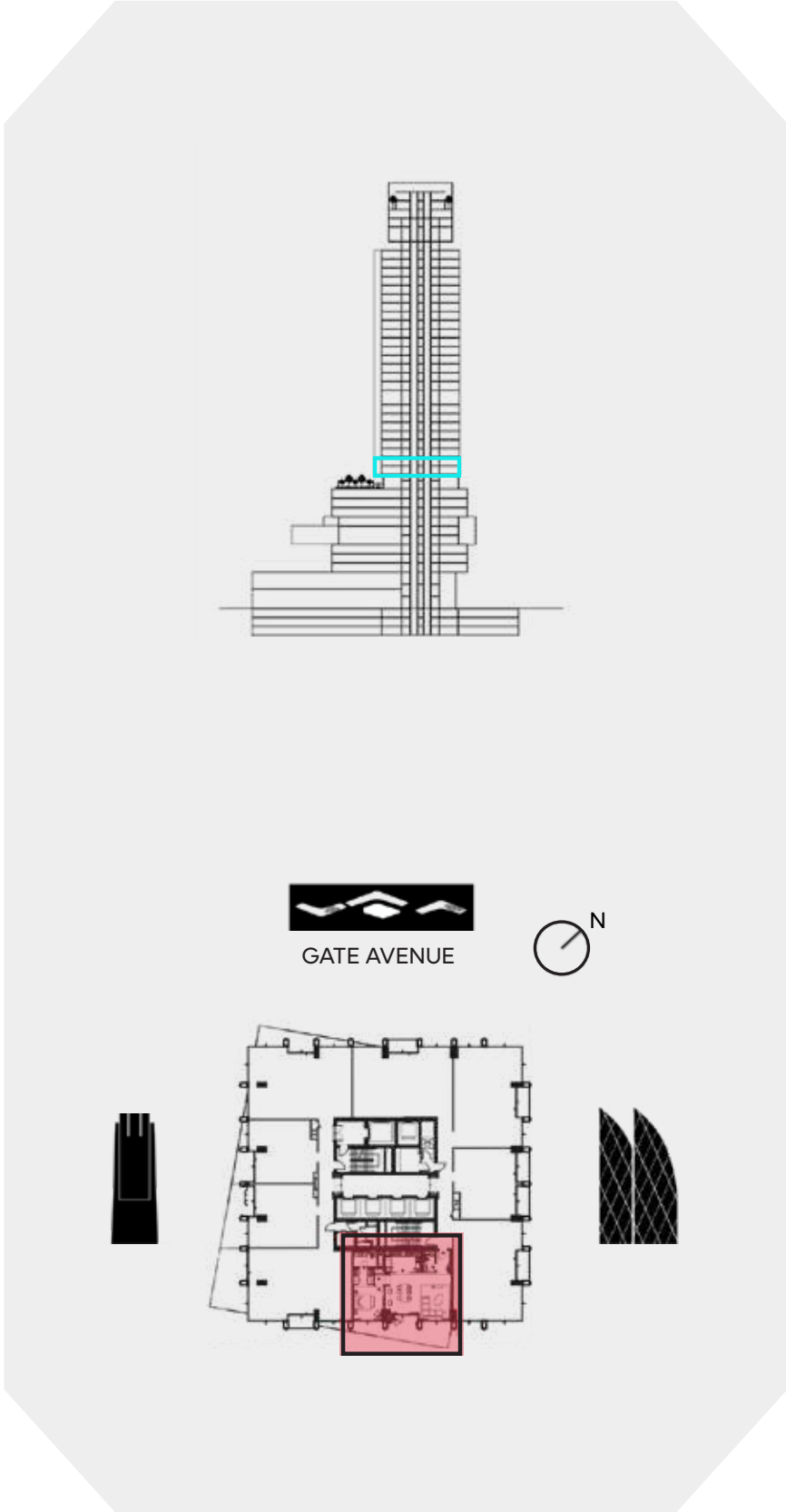
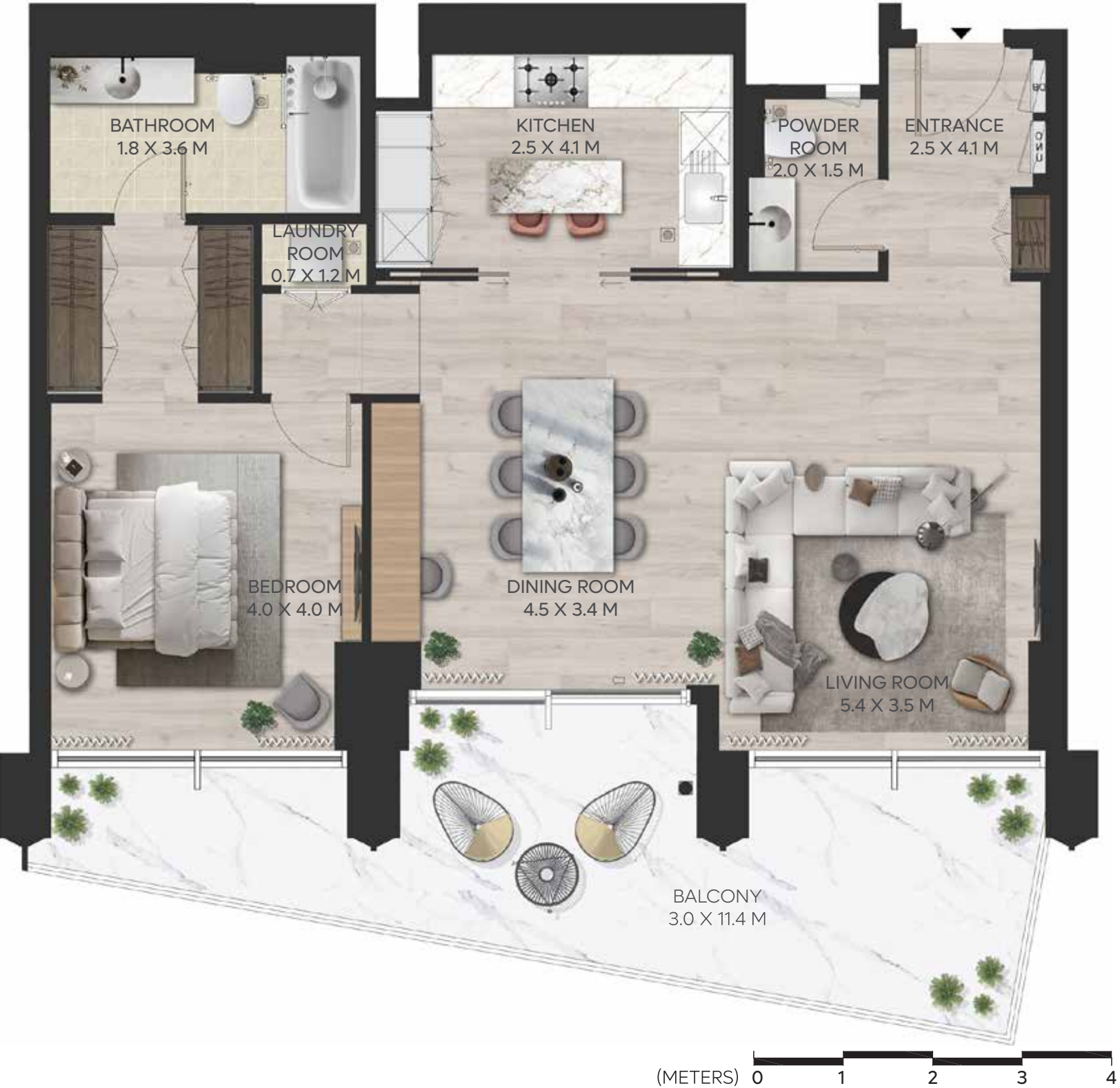


# EXECUTIVE 1 BEDROOM B2

LEVEL 10

**UNIT AREA**

INTERNAL AREA	93.52 SQ.M.	1,006.63	SQ.FT.
EXTERNAL AREA	28.41 SQ.M.	305.80	SQ.FT.
<b>TOTAL AREA</b>	<b>121.93 SQ.M.</b>	<b>1,312.43</b>	<b>SQ.FT.</b>



**DISCLAIMER:**

All measurements are indicative and are for marketing purposes only. All efforts have been made to ensure their accuracy, however these layouts are subject to change at the discretion of the developer and should not be relied upon as final. The actual area may vary from the stated area and the developer reserves the right to make the revisions/alterations, at its absolute discretion, without any liability whatsoever.



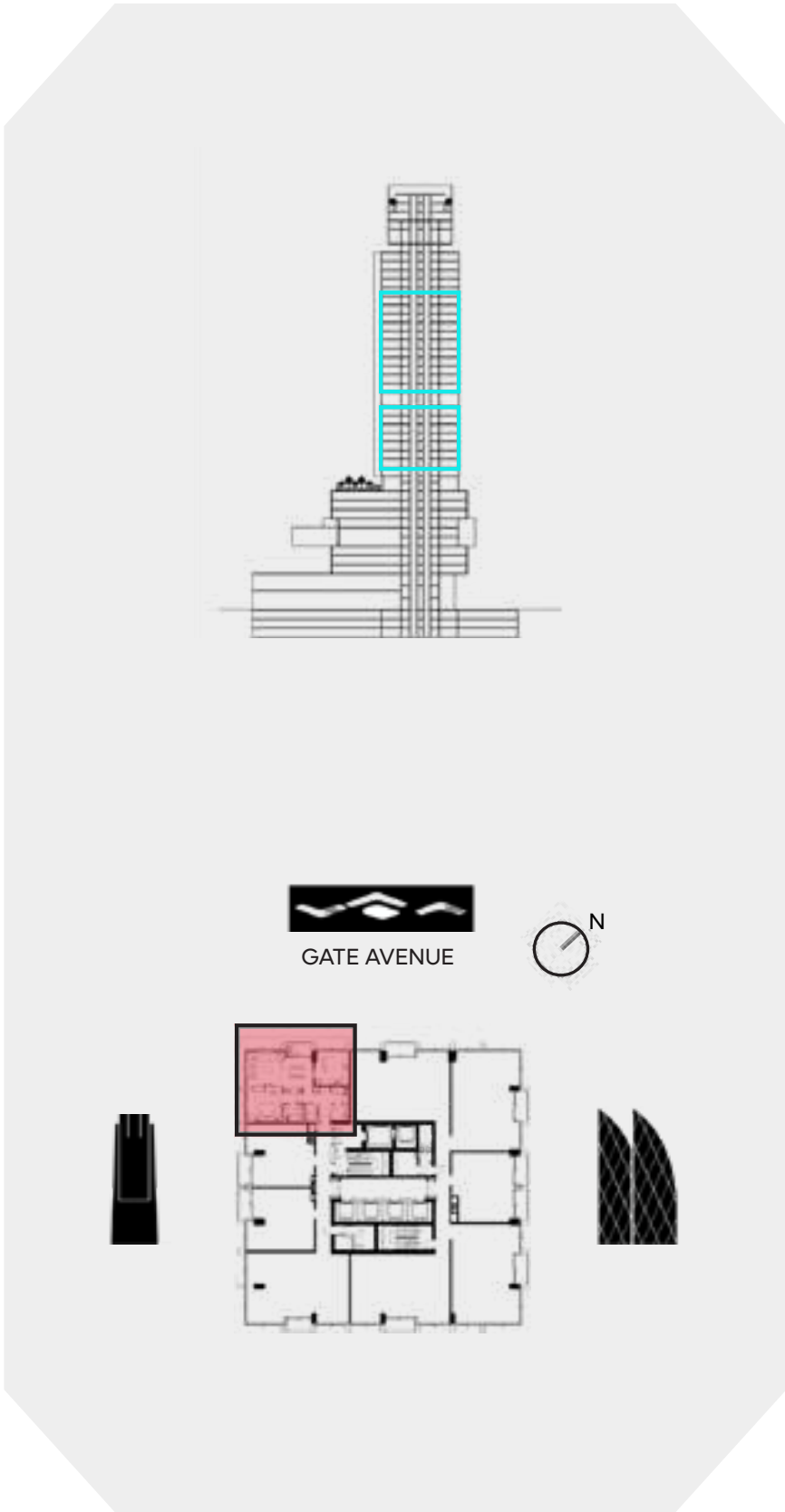
# EXECUTIVE 1 BEDROOM C

LEVEL 11-17

LEVEL 19-30

**UNIT AREA**

INTERNAL AREA	97.22 SQ.M.	1,046.46	SQ.FT.
EXTERNAL AREA	4.96 SQ.M.	53.38	SQ.FT.
<b>TOTAL AREA</b>	<b>102.18 SQ.M.</b>	<b>1,099.84</b>	<b>SQ.FT.</b>



**DISCLAIMER:**

All measurements are indicative and are for marketing purposes only. All efforts have been made to ensure their accuracy, however these layouts are subject to change at the discretion of the developer and should not be relied upon as final. The actual area may vary from the stated area and the developer reserves the right to make the revisions/alterations, at its absolute discretion, without any liability whatsoever.

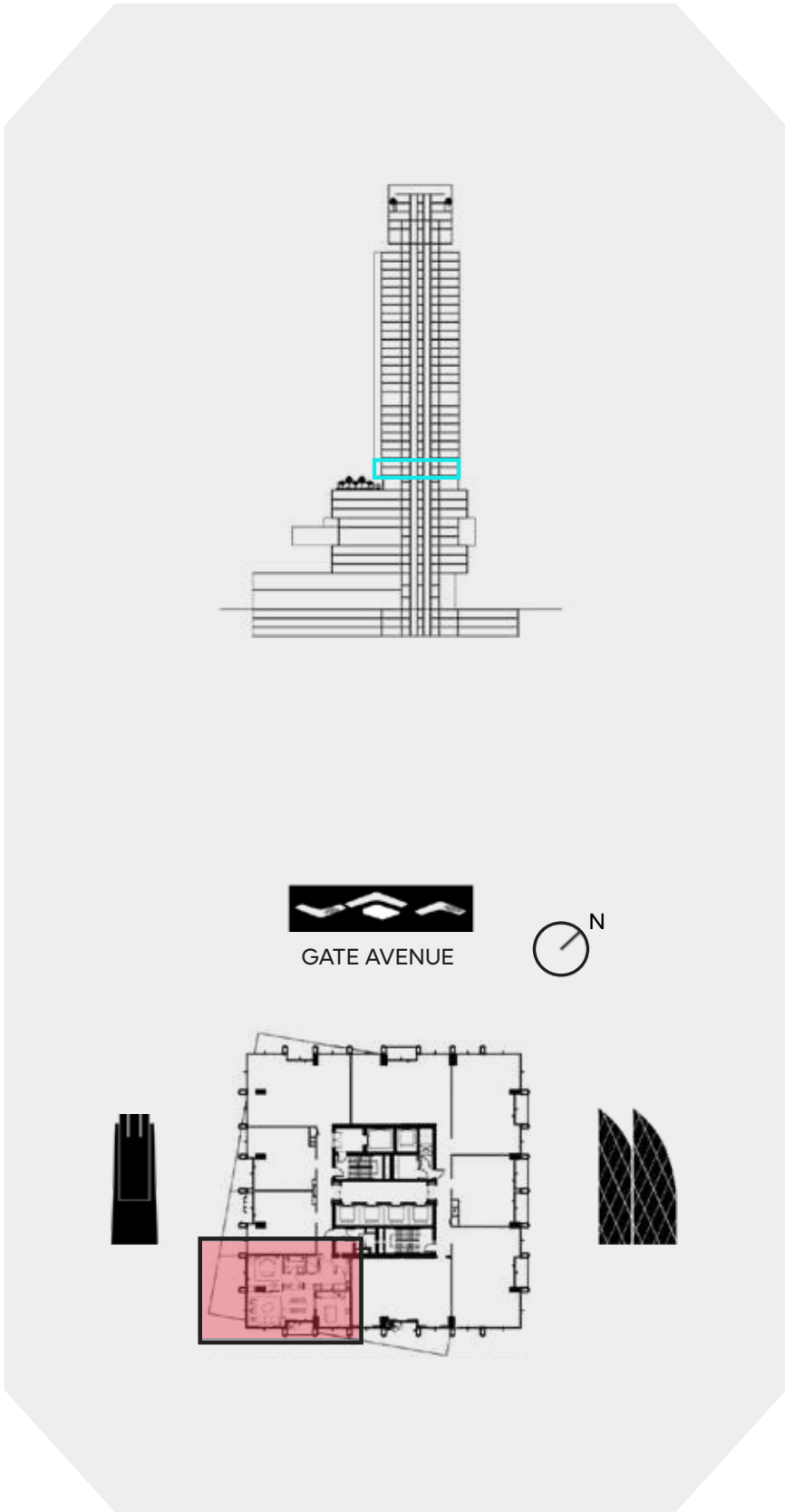


# EXECUTIVE 1 BEDROOM C1

LEVEL 10

**UNIT AREA**

INTERNAL AREA	97.32 SQ.M.	1,047.54 SQ.FT.
EXTERNAL AREA	35.50 SQ.M.	382.11 SQ.FT.
<b>TOTAL AREA</b>	<b>132.82 SQ.M.</b>	<b>1,429.65 SQ.FT.</b>



**DISCLAIMER:**

All measurements are indicative and are for marketing purposes only. All efforts have been made to ensure their accuracy, however these layouts are subject to change at the discretion of the developer and should not be relied upon as final. The actual area may vary from the stated area and the developer reserves the right to make the revisions/alterations, at its absolute discretion, without any liability whatsoever.

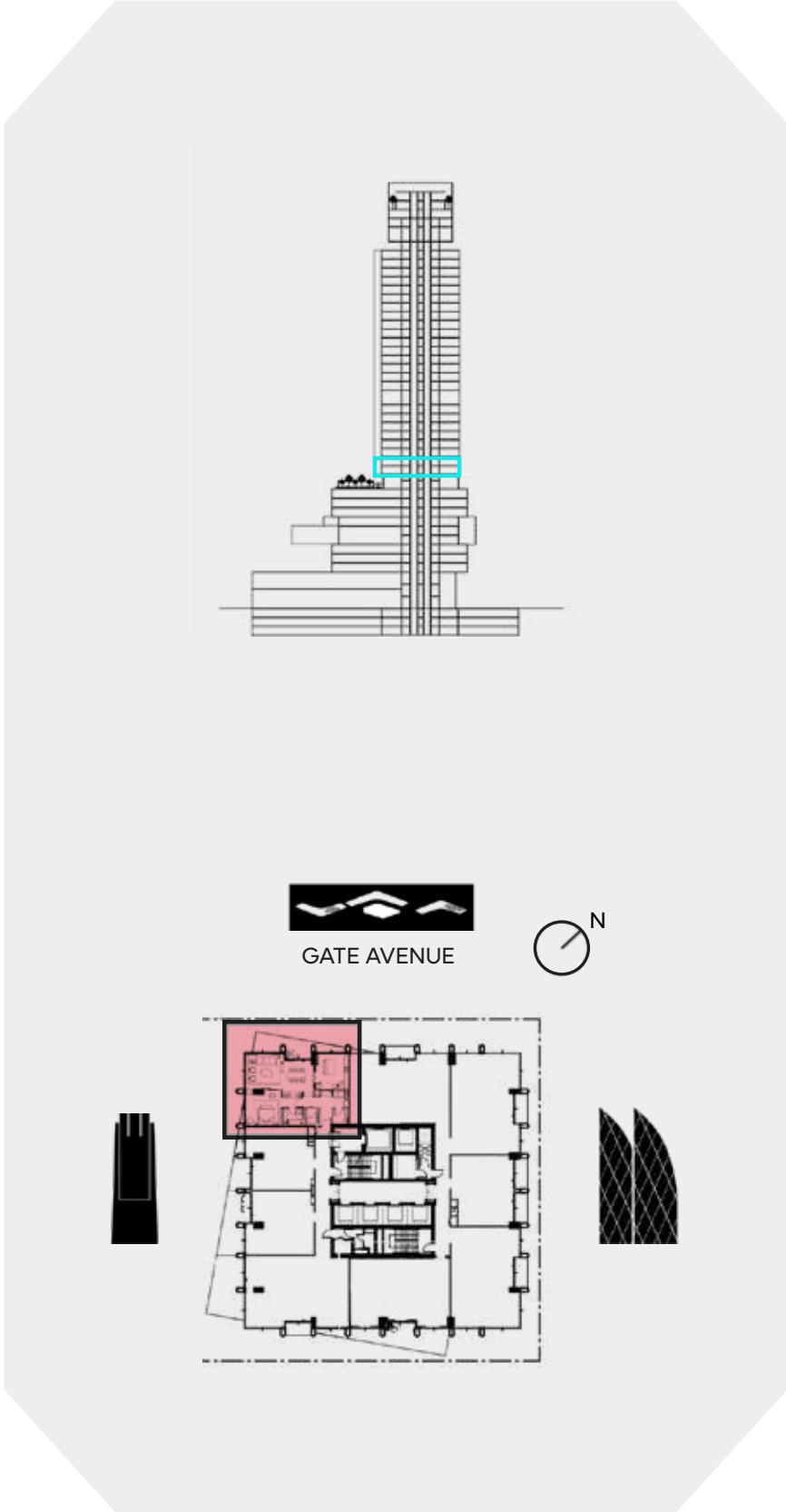


# EXECUTIVE 1 BEDROOM C2

LEVEL 10

**UNIT AREA**

INTERNAL AREA	97.25 SQ.M.	1,046.78	SQ.FT.
EXTERNAL AREA	20.19 SQ.M.	217.32	SQ.FT.
<b>TOTAL AREA</b>	<b>117.44 SQ.M.</b>	<b>1,264.10</b>	<b>SQ.FT.</b>



**DISCLAIMER:**

All measurements are indicative and are for marketing purposes only. All efforts have been made to ensure their accuracy, however these layouts are subject to change at the discretion of the developer and should not be relied upon as final. The actual area may vary from the stated area and the developer reserves the right to make the revisions/alterations, at its absolute discretion, without any liability whatsoever.

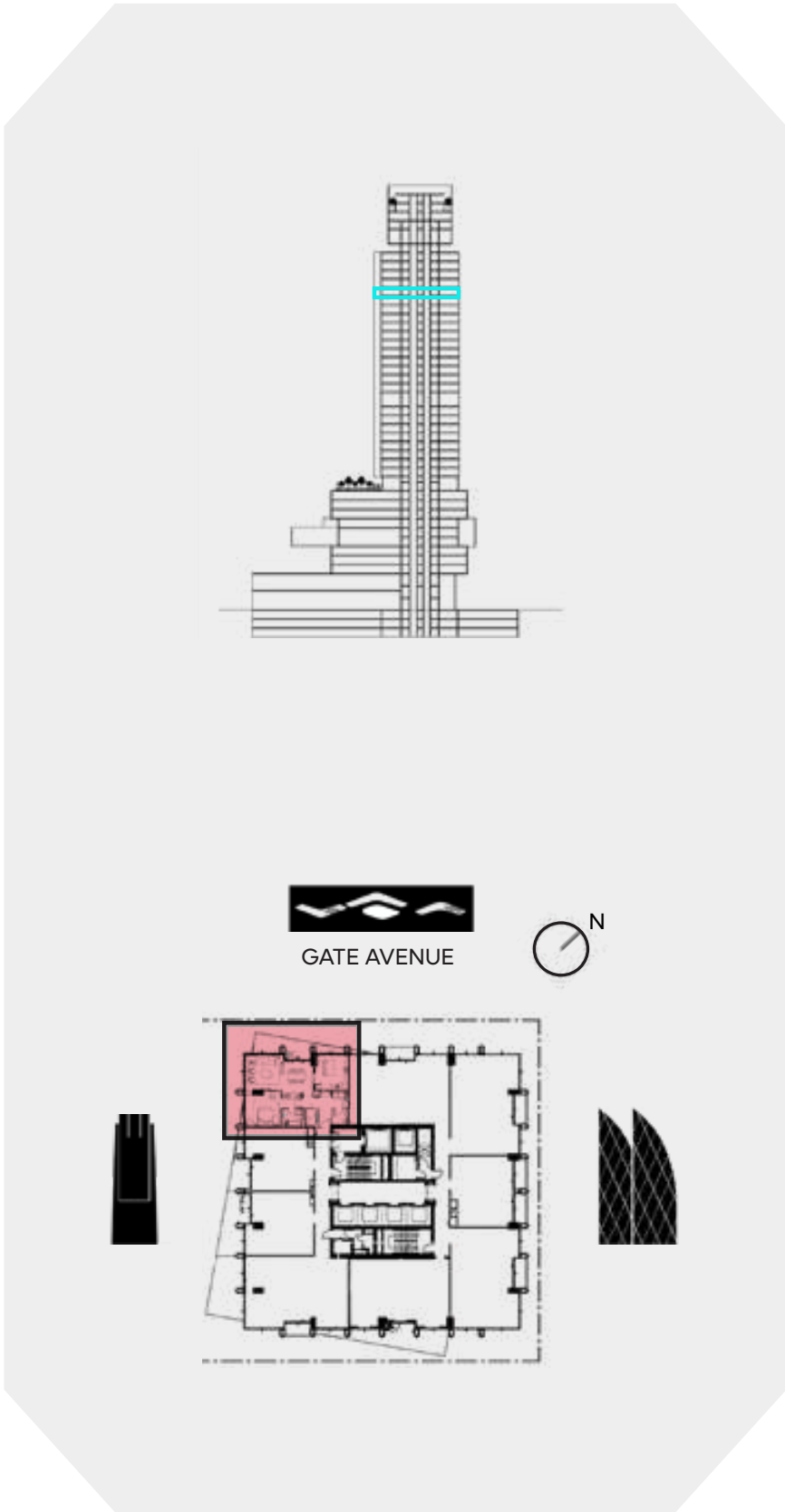


# EXECUTIVE 1 BEDROOM D

LEVEL 30

**UNIT AREA**

INTERNAL AREA	100.29 SQ.M.	1,079.51	SQ.FT.
EXTERNAL AREA	30.09 SQ.M.	323.88	SQ.FT.
<b>TOTAL AREA</b>	<b>130.38 SQ.M.</b>	<b>1,403.39</b>	<b>SQ.FT.</b>



**DISCLAIMER:**

All measurements are indicative and are for marketing purposes only. All efforts have been made to ensure their accuracy, however these layouts are subject to change at the discretion of the developer and should not be relied upon as final. The actual area may vary from the stated area and the developer reserves the right to make the revisions/alterations, at its absolute discretion, without any liability whatsoever.



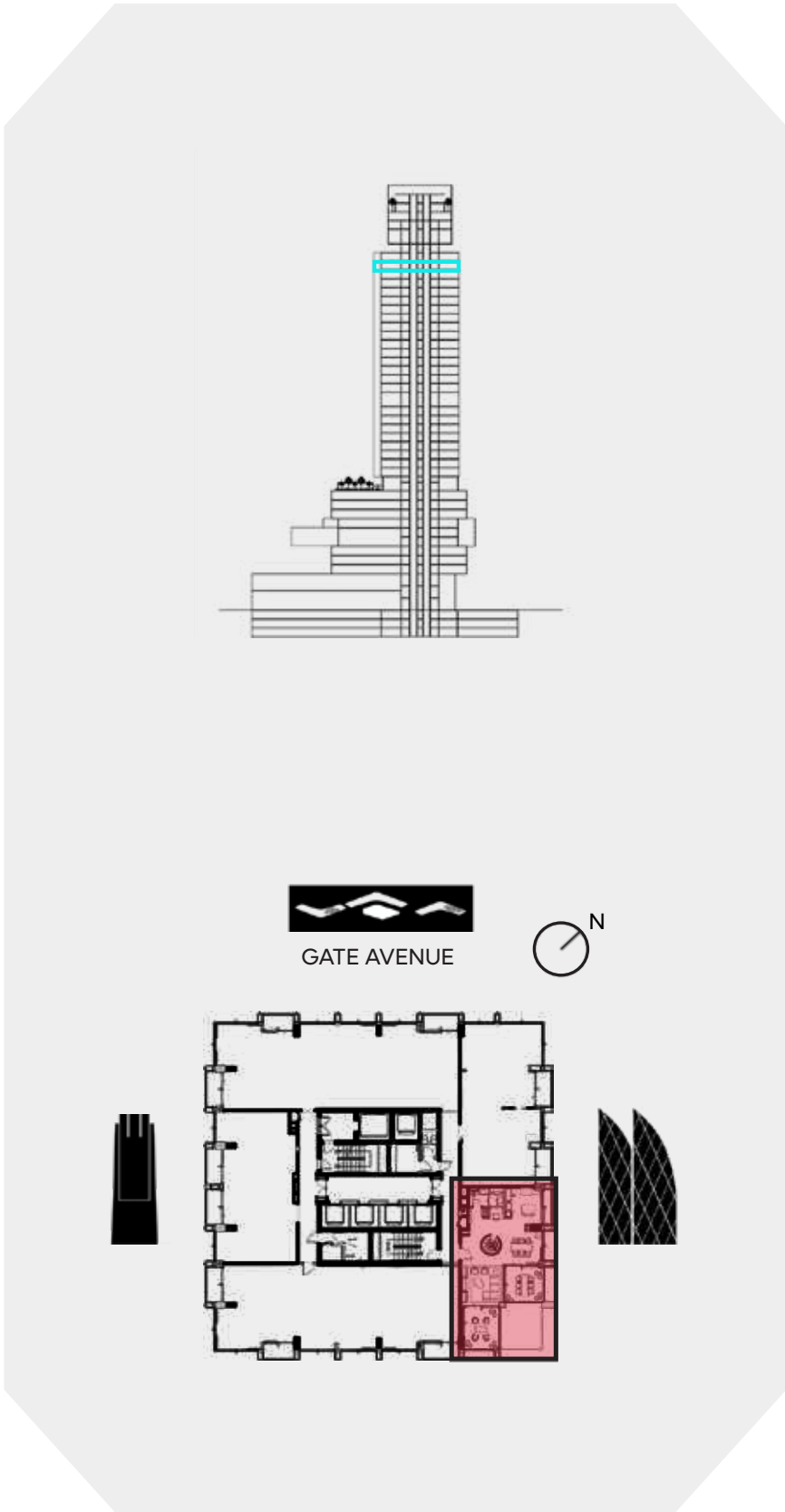
# EXECUTIVE 1 BEDROOM LOFT

LOWER LEVEL

LEVEL 33

**UNIT AREA**

INTERNAL AREA	118.53	SQ.M.	1,275.84	SQ.FT.
EXTERNAL AREA	42.38	SQ.M.	456.17	SQ.FT.
<b>TOTAL AREA</b>	<b>160.91</b>	<b>SQ.M.</b>	<b>1,732.01</b>	<b>SQ.FT.</b>



**DISCLAIMER:**

All measurements are indicative and are for marketing purposes only. All efforts have been made to ensure their accuracy, however these layouts are subject to change at the discretion of the developer and should not be relied upon as final. The actual area may vary from the stated area and the developer reserves the right to make the revisions/alterations, at its absolute discretion, without any liability whatsoever.



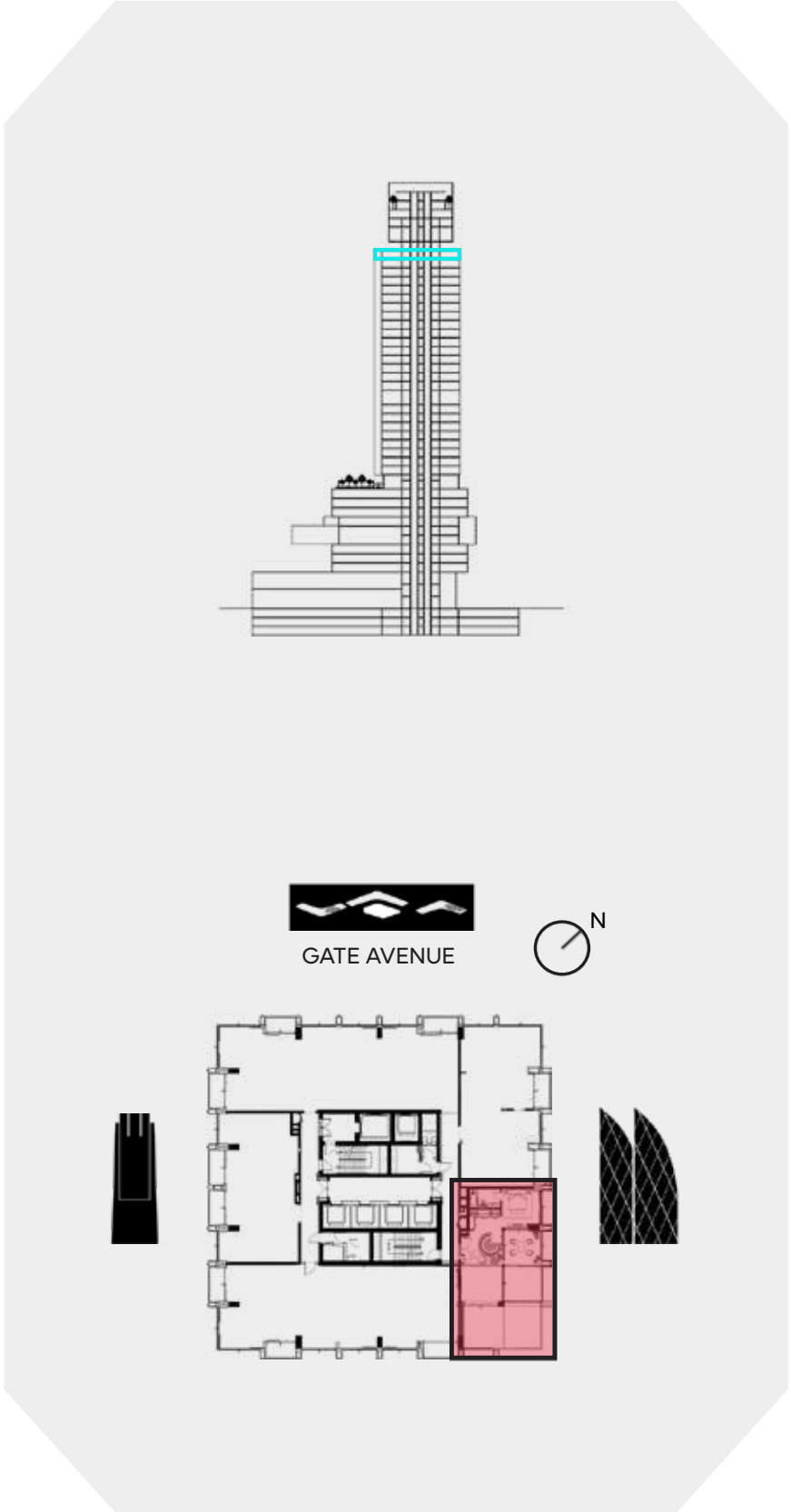
# EXECUTIVE 1 BEDROOM LOFT

UPPER LEVEL

LEVEL 34

**UNIT AREA**

INTERNAL AREA	118.53 SQ.M.	1,275.84 SQ.FT.
EXTERNAL AREA	42.38 SQ.M.	456.17 SQ.FT.
<b>TOTAL AREA</b>	<b>160.91 SQ.M.</b>	<b>1,732.01 SQ.FT.</b>



**DISCLAIMER:**

All measurements are indicative and are for marketing purposes only. All efforts have been made to ensure their accuracy, however these layouts are subject to change at the discretion of the developer and should not be relied upon as final. The actual area may vary from the stated area and the developer reserves the right to make the revisions/alterations, at its absolute discretion, without any liability whatsoever.



For more information, please visit:

DIFC Living Sales Gallery

Gate Village | DIFC | Dubai

10am – 6pm from Monday – Saturday

[www.difcliving.ae](http://www.difcliving.ae)

---

#### **DISCLAIMER**

Please note that these floor plans are for marketing purposes and are to be used as a guide only. Best efforts have been made to ensure accuracy at the time of print, however these layouts are subject to change at the discretion of the developer.