

OCEAN HOUSE

ELLINGTON

FLOOR PLAN

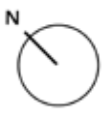
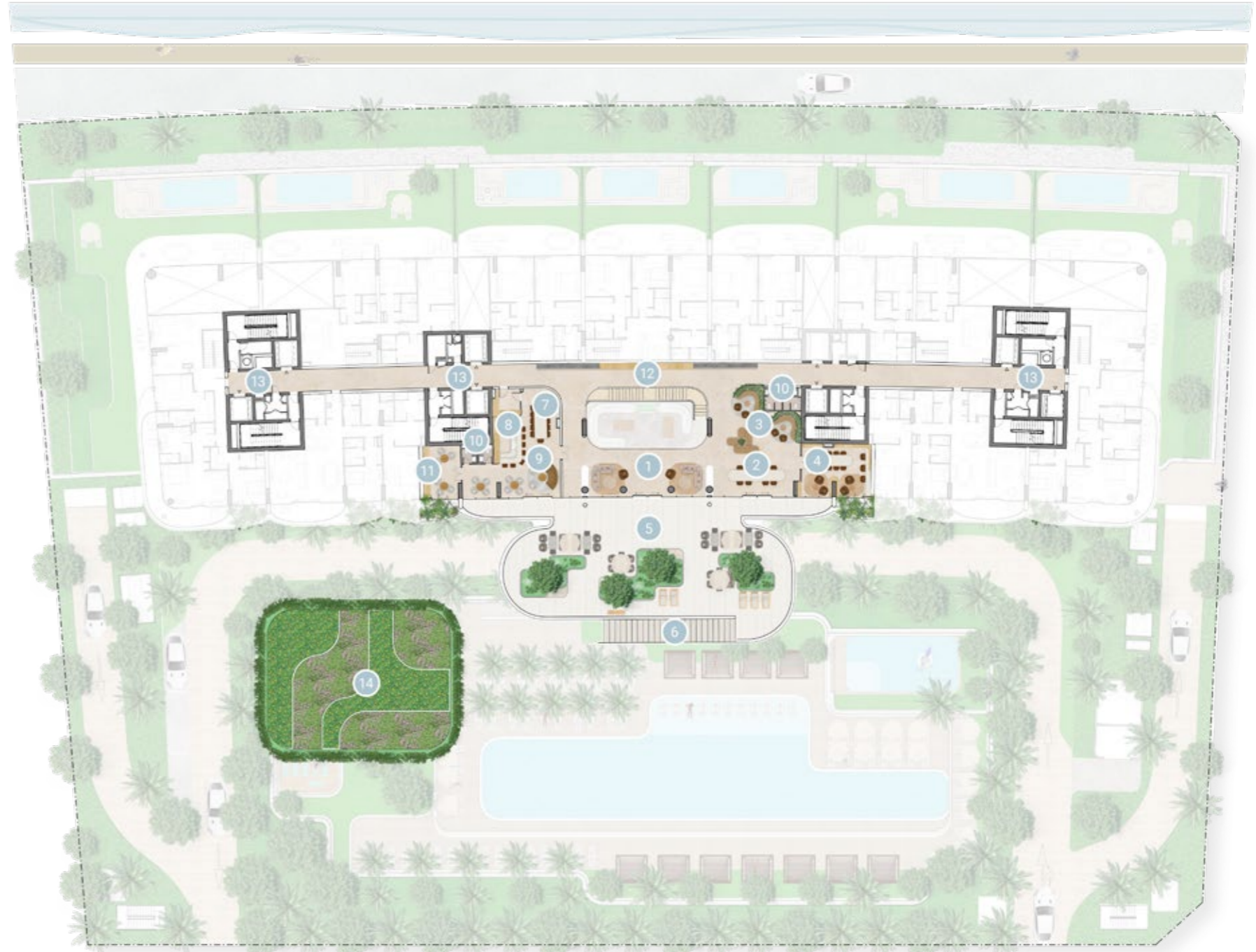
GROUND FLOOR AMENITIES PLAN

- 01 MAIN ENTRANCE
- 02 KIDS PLAY AREA
- 03 KIDS BATHROOM
- 04 MEETING ROOM
- 05 LOBBY LOUNGE
- 06 LOBBY ENTRANCE
- 07 DROP-OFF AREA
- 08 LOBBY RECEPTION
- 09 CINEMA ROOM
- 10 GAMES ROOM
- 11 ACCESS TO THE POOL TERRACE
- 12 FEATURE STAIRCASE
- 13 OLYMPIC SIZE POOL
- 14 BAJA SHELF
- 15 CABANAS
- 16 SUN LOUNGERS' AREA
- 17 KIDS POOL
- 18 FITNESS STUDIO
- 19 OUTDOOR YOGA DECK
- 20 FEMALE CHANGE ROOM
- 21 MALE CHANGE ROOM
- 22 ACCESS TO WELLNESS SPA
- 23 VISITOR PARKING
- 24 VEHICLE ENTRANCE
- 25 VEHICLE EXIT
- 26 SALT CAVE
- 27 STEAM ROOM
- 28 INFRARED SAUNA ROOM
- 29 PLUNGE POOL
- 30 AROMATHERAPY EXPERIENCE SHOWER
- 31 HYDROTHERAPY PATH WALK
- 32 ACCESS TO BASEMENT PARKING



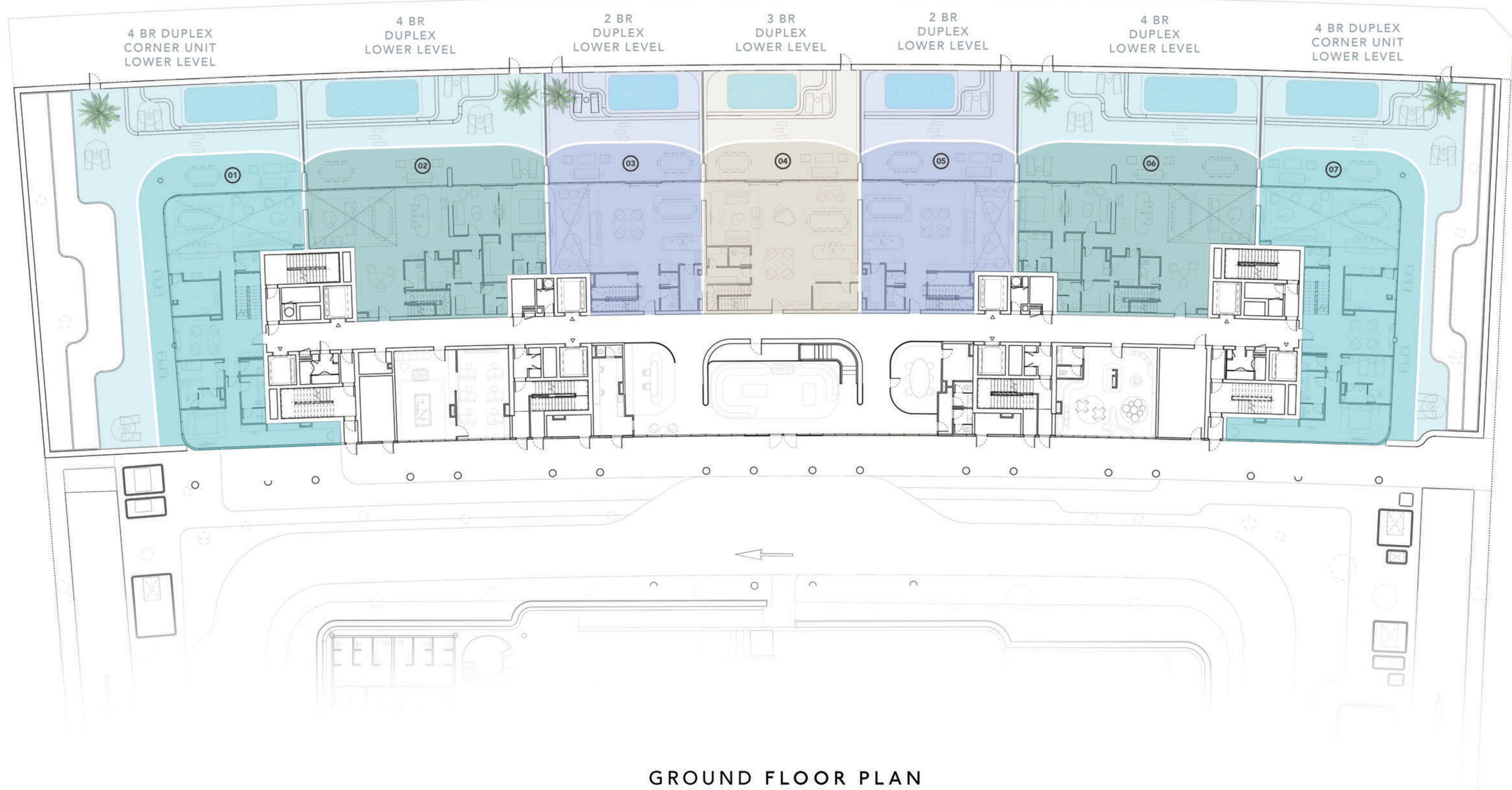
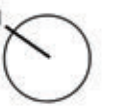
1ST FLOOR AMENITIES PLAN

- 01 LOUNGE AREA
- 02 COMMUNAL TABLE
- 03 CO-WORKING AREA
- 04 LIBRARY ROOM
- 05 OUTDOOR TERRACE LOUNGE
- 06 ACCESS TO POOL DECK
- 07 PRIVATE DINING
- 08 SHOW KITCHEN
- 09 PRIVATE LOUNGE
- 10 WASHROOM
- 11 CIGAR ROOM
- 12 GALLERY WALL
- 13 LIFT LOBBIES
- 14 ROOFTOP GARDEN



DOWNTOWN DUBAI VIEWS

BURJ AL ARAB VIEWS



4 BR DUPLEX
CORNER UNIT
LOWER LEVEL

4 BR
DUPLEX
LOWER LEVEL

2 BR
DUPLEX
LOWER LEVEL

3 BR
DUPLEX
LOWER LEVEL

2 BR
DUPLEX
LOWER LEVEL

4 BR
DUPLEX
LOWER LEVEL

4 BR DUPLEX
CORNER UNIT
LOWER LEVEL

2 BEDROOM DUPLEX
APARTMENTS
WITH PRIVATE POOL

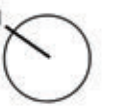
3 BEDROOM DUPLEX
APARTMENT
WITH PRIVATE POOL

4 BEDROOM CORNER
DUPLEX APARTMENTS
WITH PRIVATE POOL

4 BEDROOM DUPLEX
APARTMENTS
WITH PRIVATE POOL

DOWNTOWN DUBAI VIEWS

BURJ AL ARAB VIEWS



4 BR DUPLEX
CORNER UNIT
UPPER LEVEL

4 BR
DUPLEX
UPPER LEVEL

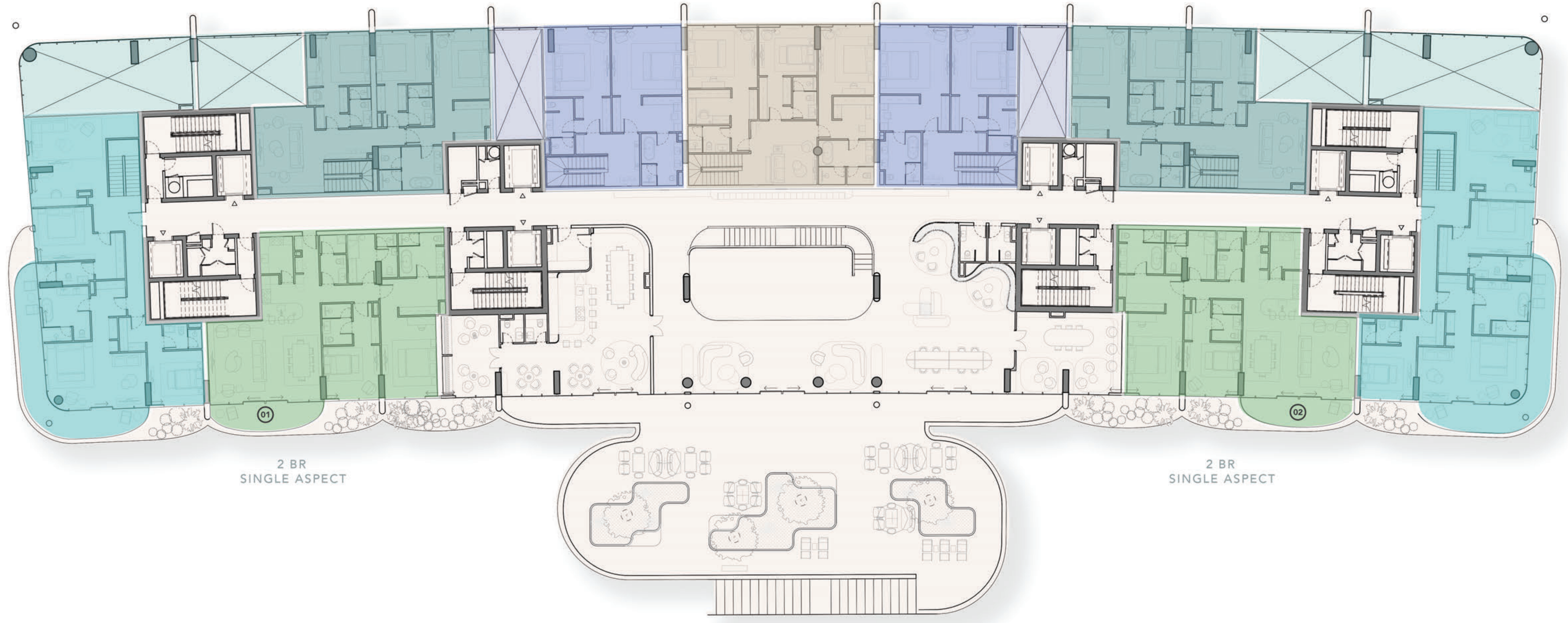
2 BR
DUPLEX
UPPER LEVEL

3 BR
DUPLEX
UPPER LEVEL

2 BR
DUPLEX
UPPER LEVEL

4 BR
DUPLEX
UPPER LEVEL

4 BR DUPLEX
CORNER UNIT
UPPER LEVEL



2 BR
SINGLE ASPECT

2 BR
SINGLE ASPECT

OCEAN HOUSE POOL VIEWS

LEVEL 01 FLOOR PLAN



2 BEDROOM DUPLEX
APARTMENTS
WITH PRIVATE POOL



2 BEDROOM SINGLE
ASPECT APARTMENTS



3 BEDROOM DUPLEX
APARTMENT
WITH PRIVATE POOL



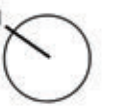
4 BEDROOM CORNER
DUPLEX APARTMENTS
WITH PRIVATE POOL



4 BEDROOM DUPLEX
APARTMENTS
WITH PRIVATE POOL

DOWNTOWN DUBAI VIEWS

BURJ AL ARAB VIEWS



ROYAL ATLANTIS VIEWS

DUBAI MARINA VIEWS

LEVEL 02-07 TYPICAL FLOOR PLAN



2 BEDROOM SINGLE ASPECT APARTMENTS



2 BEDROOM DUAL ASPECT APARTMENTS



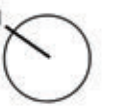
3 BEDROOM DUAL ASPECT CORNER APARTMENTS



3 BEDROOM DUAL ASPECT APARTMENTS

DOWNTOWN DUBAI VIEWS

BURJ AL ARAB VIEWS



3 BR
DUAL ASPECT
CORNER

4 BR
DUAL ASPECT

6 BR
DUAL ASPECT

4 BR
DUAL ASPECT

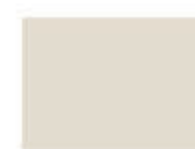
3 BR
DUAL ASPECT
CORNER



ROYAL ATLANTIS VIEWS

DUBAI MARINA VIEWS

LEVEL 08 FLOOR PLAN



3 BEDROOM DUAL ASPECT
CORNER APARTMENTS



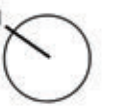
4 BEDROOM DUAL
ASPECT APARTMENTS



6 BEDROOM DUAL
ASPECT APARTMENT

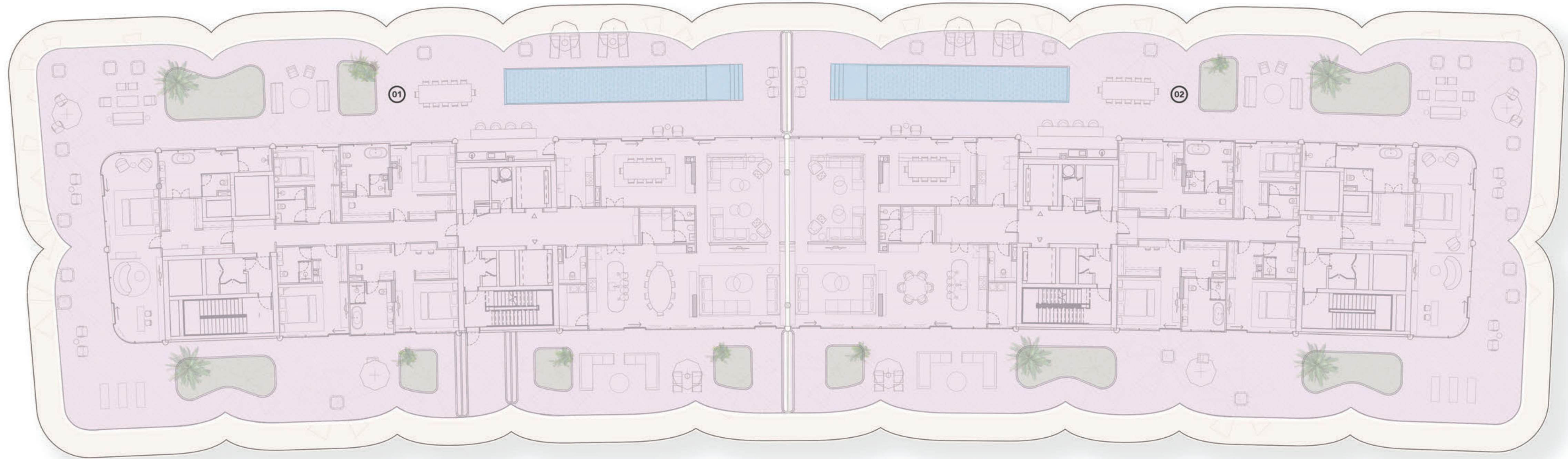
DOWNTOWN DUBAI VIEWS

BURJ AL ARAB VIEWS



PENTHOUSE
TYPE 01

PENTHOUSE
TYPE 02



ROYAL ATLANTIS VIEWS

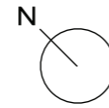
DUBAI MARINA VIEWS

LEVEL 09 FLOOR PLAN

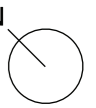


PENTHOUSES

2 BEDROOM SINGLE ASPECT



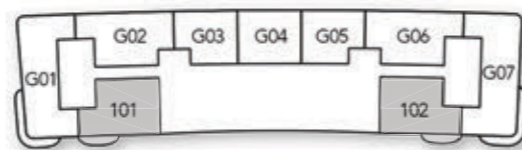
2 BEDROOM SINGLE ASPECT
TYPE A



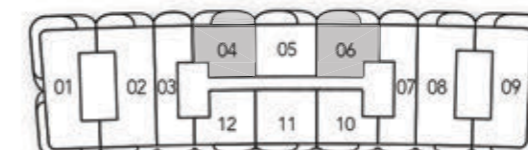
Internal Living Area	Outdoor Living Area	Total Living Area
1895.42 sq.ft	153.82 sq.ft	2049.23

Internal Living Area	Outdoor Living Area	Total Living Area
1519.22 sq.ft	266.62 sq.ft	1785.84 sq.ft

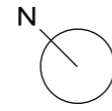
1st Floor



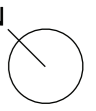
2nd Floor - 7th Floor



2 BEDROOM SINGLE ASPECT
TYPE B



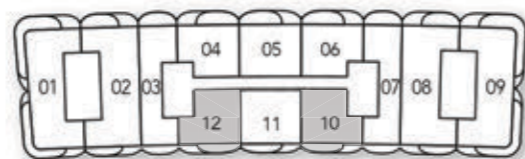
2 BEDROOM SINGLE ASPECT
TYPE C



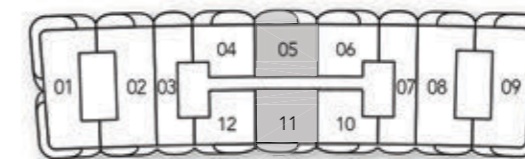
Internal Living Area	Outdoor Living Area	Total Living Area
1470.78 sq.ft	171.47 sq.ft	1642.25 sq.ft

Internal Living Area	Outdoor Living Area	Total Living Area
1665.28 sq.ft	261.67 sq.ft	1926.95 sq.ft

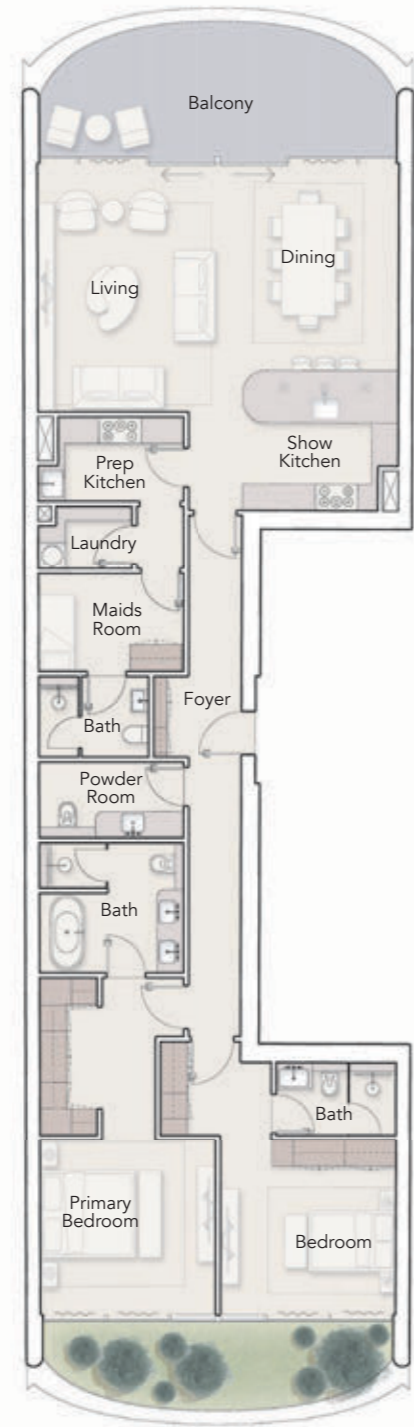
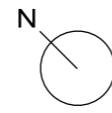
2nd Floor - 7th Floor



2nd Floor - 7th Floor



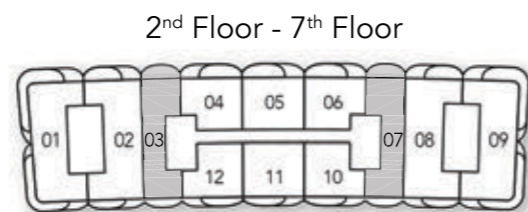
2 BEDROOM DUAL ASPECT



Internal Living Area
1879.27 sq.ft

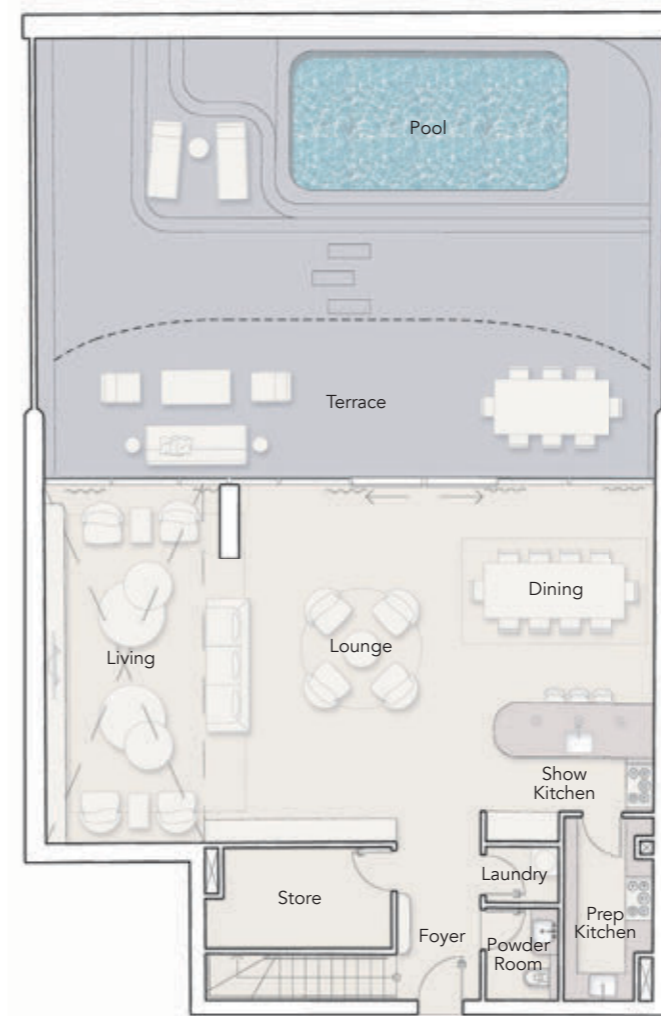
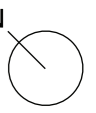
Outdoor Living Area
238.96 sq.ft

Total Living Area
2118.23 sq.ft



2nd Floor - 7th Floor

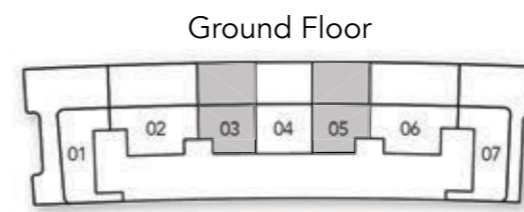
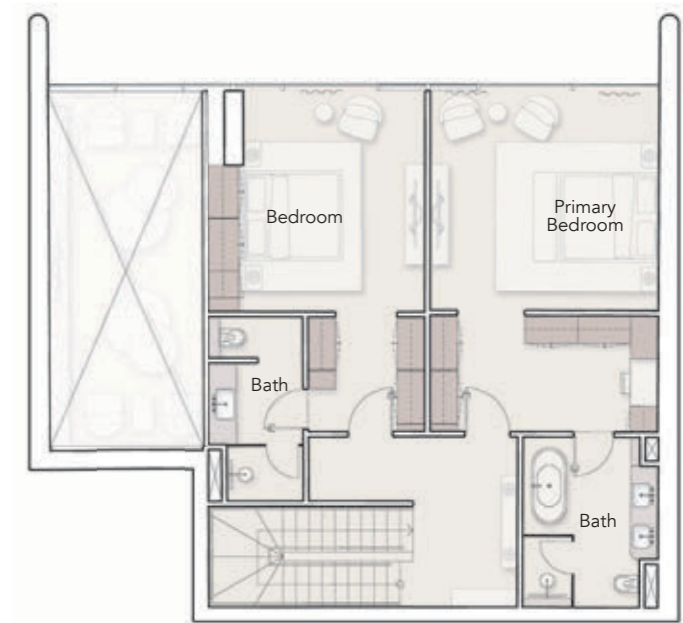
2 BEDROOM DUPLEX



Internal Living Area
2770.41 sq.ft

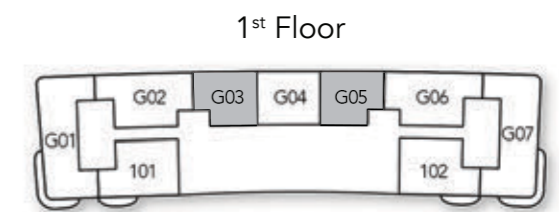
Outdoor Living Area
1443.44 sq.ft

Total Living Area
4213.85 sq.ft



Ground Floor

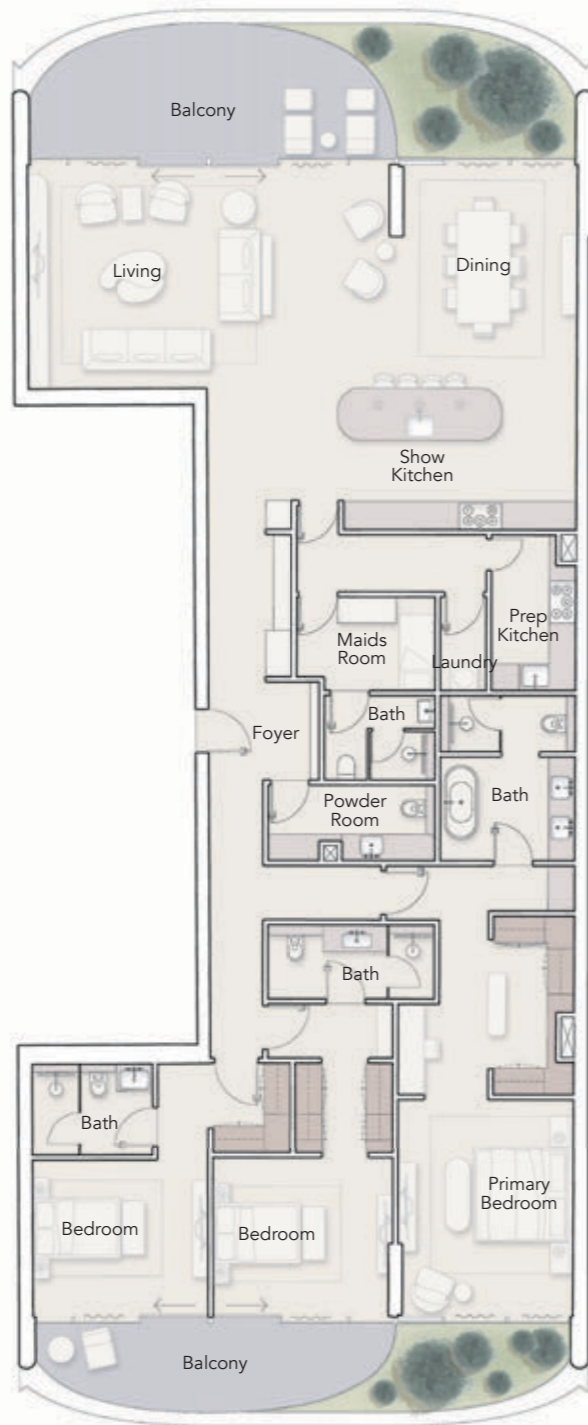
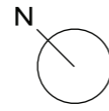
Lower Level



1st Floor

Upper Level

3 BEDROOM DUAL ASPECT



Internal Living Area

2841.02 sq.ft

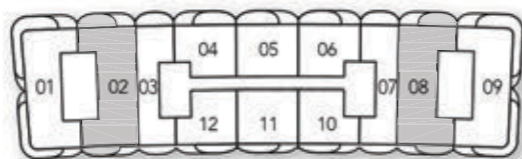
Outdoor Living Area

392.56 sq.ft

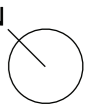
Total Living Area

3233.58 sq.ft

2nd Floor - 7th Floor



3 BEDROOM DUAL ASPECT
CORNER UNIT



Internal Living Area

2634.46 sq.ft

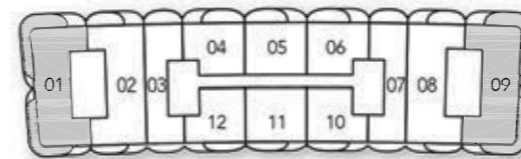
Outdoor Living Area

897.49 sq.ft

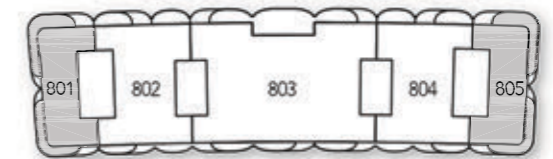
Total Living Area

3531.96 sq.ft

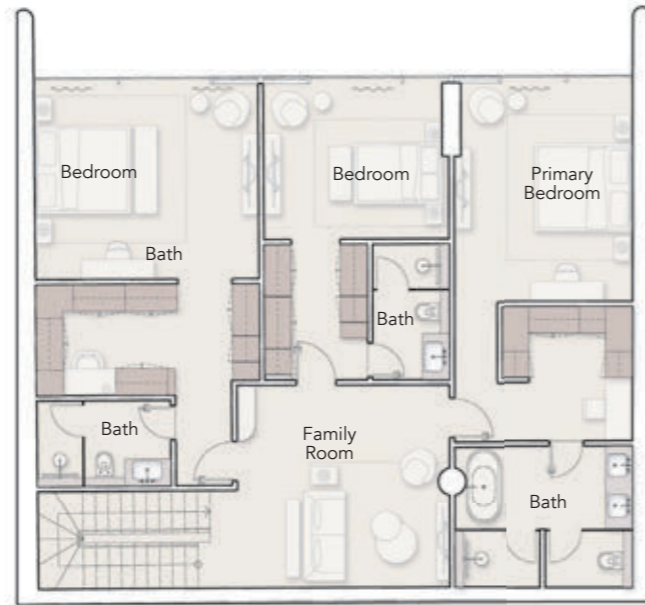
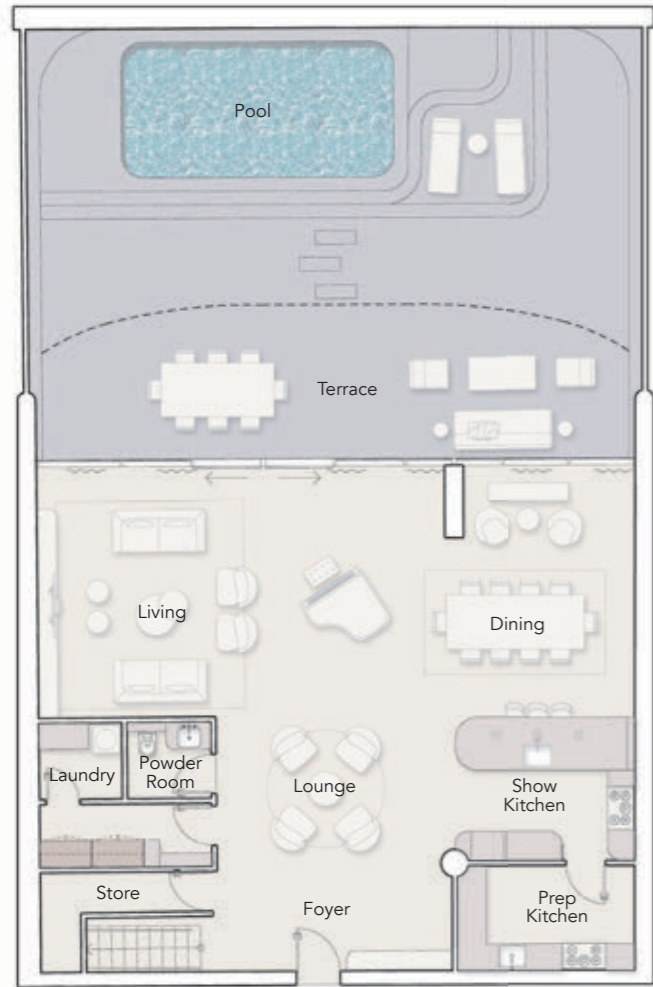
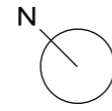
2nd Floor - 7th Floor



8th Floor

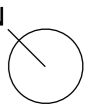


3 BEDROOM DUPLEX



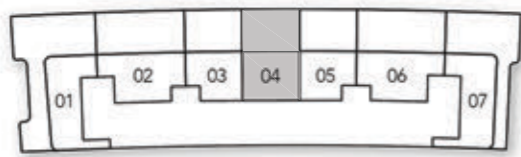
Internal Living Area	Outdoor Living Area	Total Living Area
3325.94 sq.ft	1443.98 sq.ft	4769.91 sq.ft

4 BEDROOM DUAL ASPECT



Internal Living Area	Outdoor Living Area	Total Living Area
4720.83 sq.ft	631.52 sq.ft	5352.35 sq.ft

Ground Floor



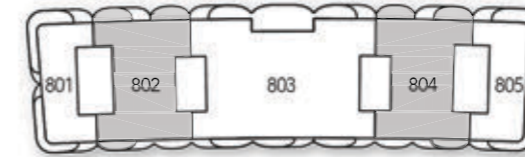
Lower Level

1st Floor

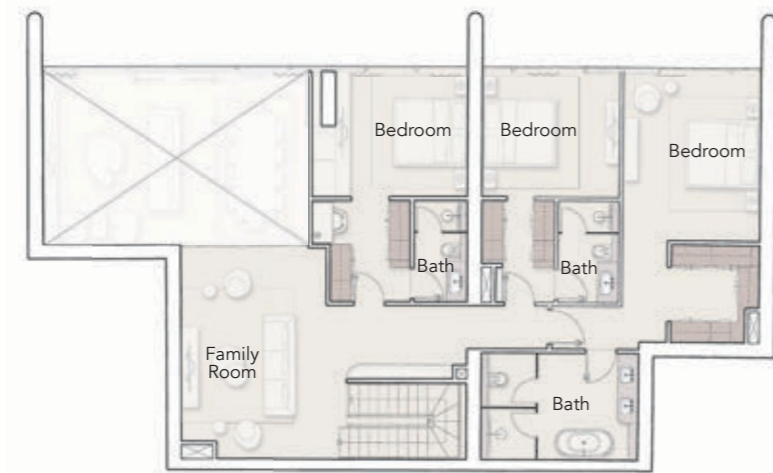
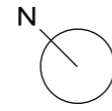


Upper Level

8th Floor



4 BEDROOM DUPLEX



Internal Living Area

3909.45 sq.ft

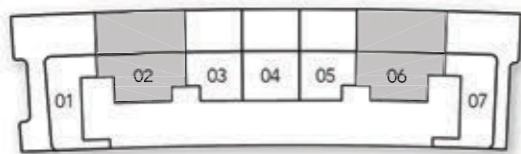
Outdoor Living Area

2230.28 sq.ft

Total Living Area

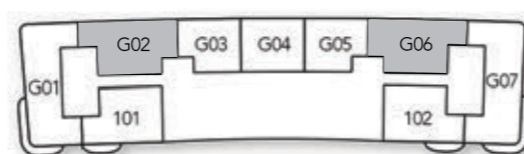
6139.73 sq.ft

Ground Floor



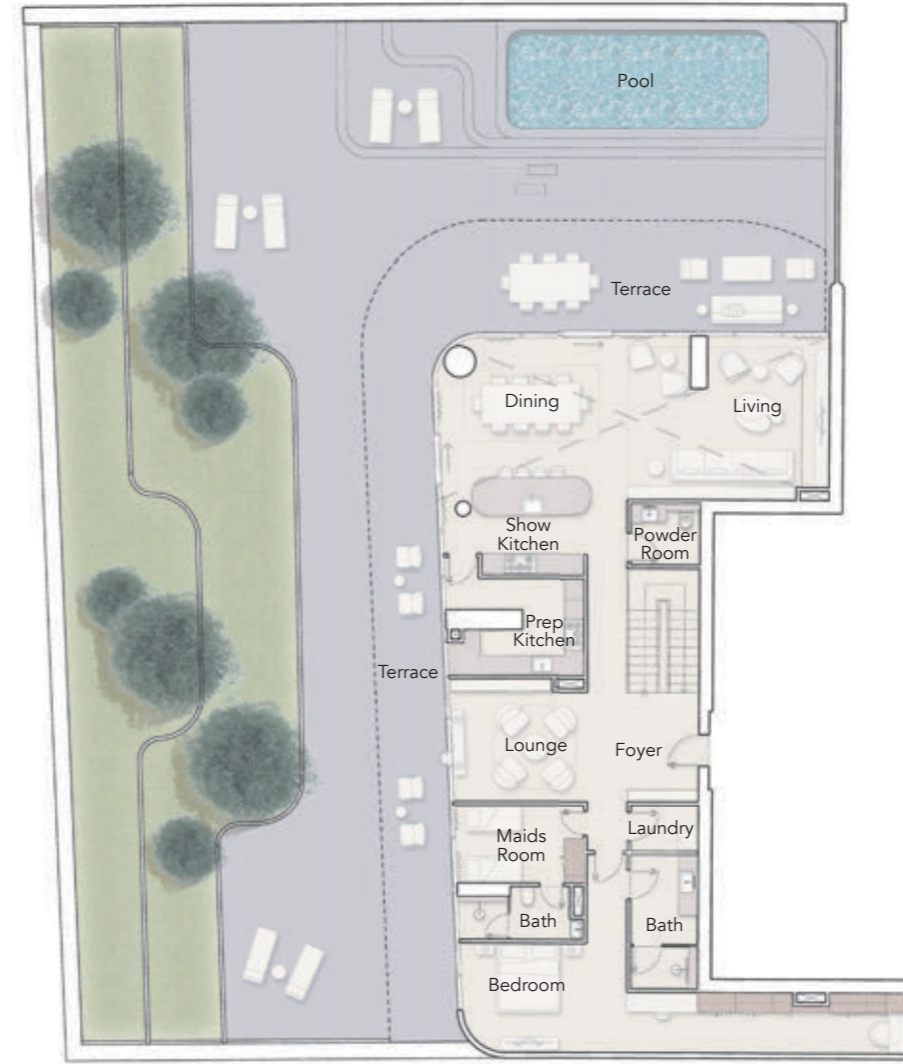
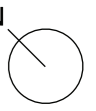
Lower Level

1st Floor



Upper Level

4 BEDROOM DUPLEX CORNER UNIT



Internal Living Area

4207.29 sq.ft

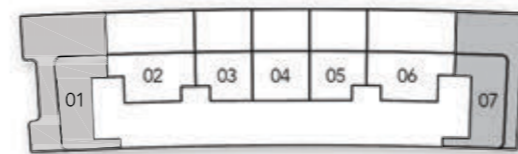
Outdoor Living Area

5710.03 sq.ft

Total Living Area

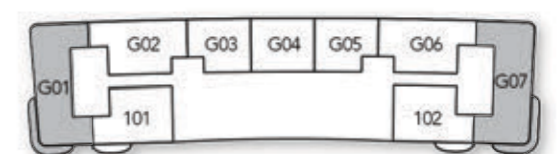
9917.32 sq.ft

Ground Floor



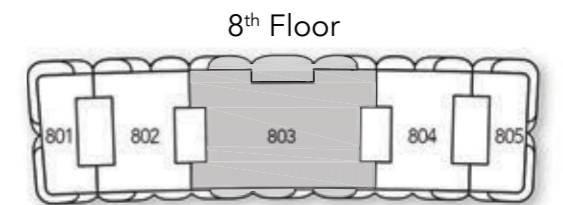
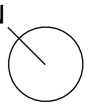
Lower Level

1st Floor



Upper Level

PRESIDENTIAL SUITE
6 BEDROOM DUAL ASPECT

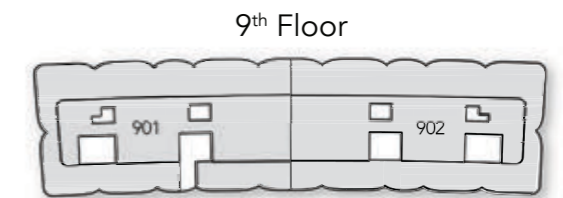
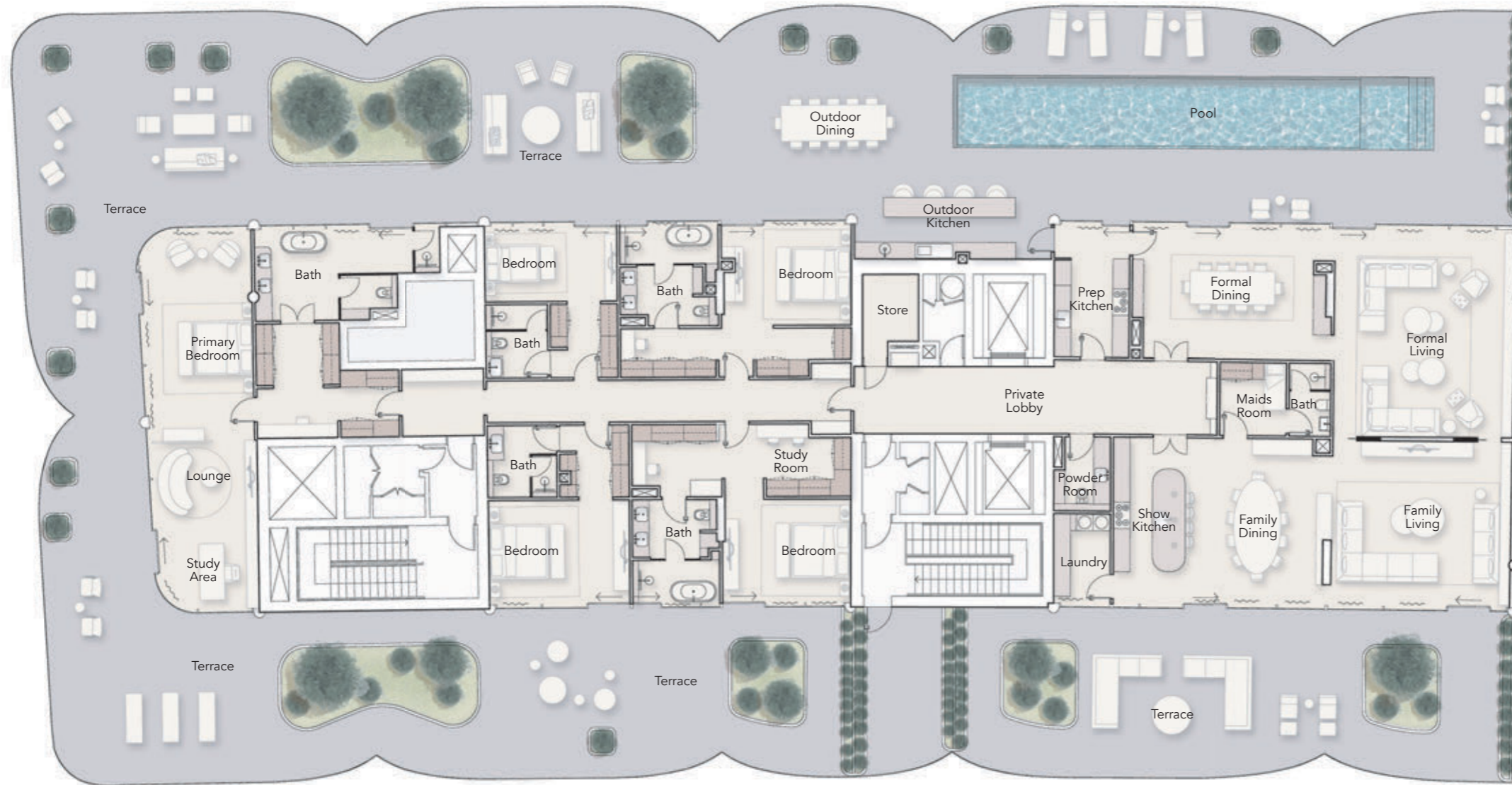
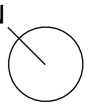


Internal Living Area
9917.32 sq.ft

Outdoor Living Area
1852.79 sq.ft

Total Living Area
11770.11 sq.ft

PENTHOUSE
5 BEDROOM CORNER ASPECT



Internal Living Area	Outdoor Living Area	Total Living Area
5952.97 sq.ft	8083.90 sq.ft	14036.88 sq.ft




ELLINGTON
P R O P E R T I E S

LIVE IN DESIGN

800 8288
info@ellingtongroup.com

ELLINGTONPROPERTIES.AE

The renderings and visualizations contained in this brochure are provided for illustrative and marketing purposes. While the information provided is believed to be accurate and reliable at the time of printing, only the information contained in the final Sales and Purchase Agreement will have any legal effect.