

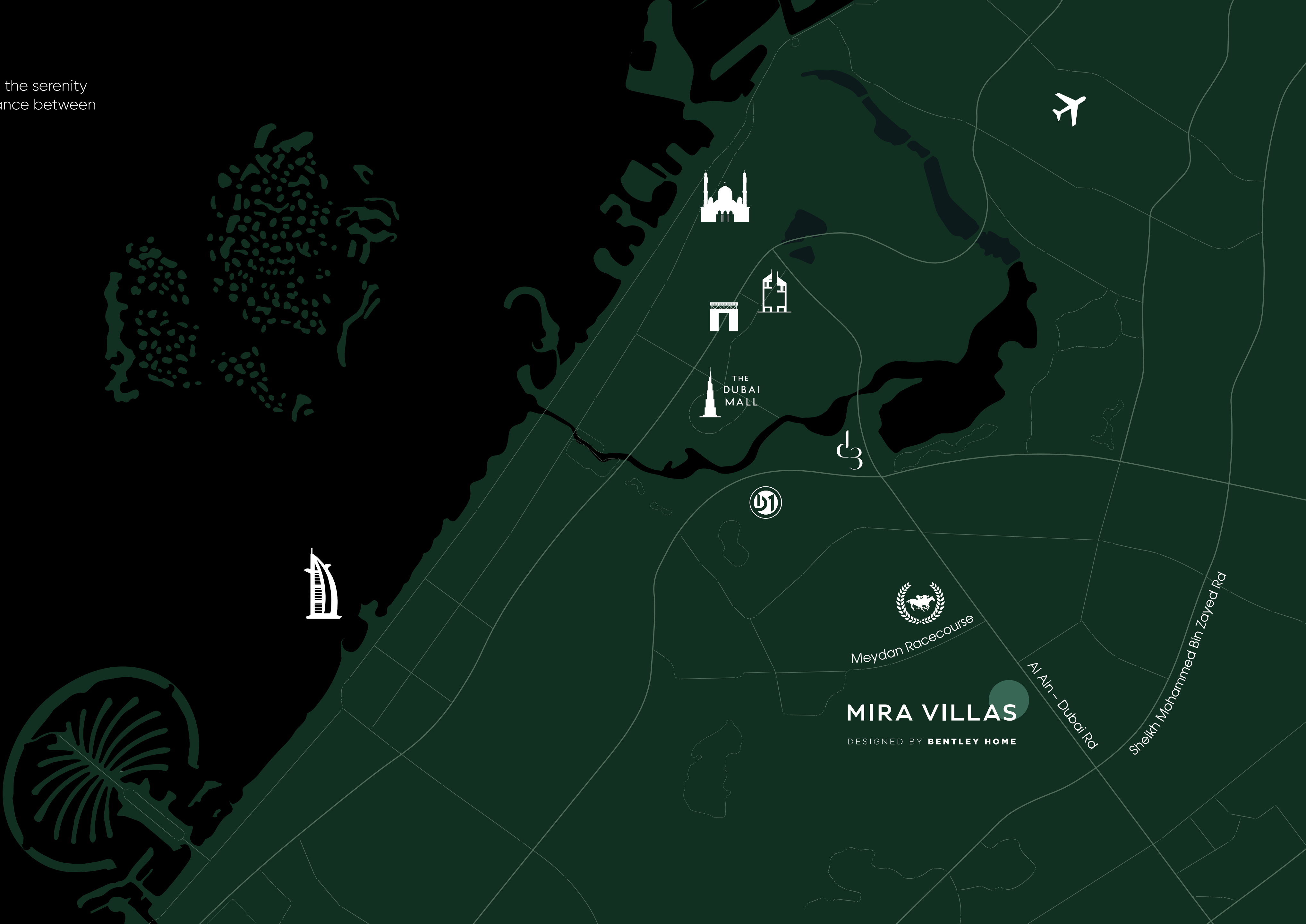
MIRA VILLAS

DESIGNED BY **BENTLEY HOME**



DISTRICT 11, MBR CITY

Breathtaking views of Dubai's skyline and the serenity of a private lagoon create a perfect balance between urban convenience and natural beauty.



FACTS

- 36 fully furnished villas
- D11 district, Meydan, Dubai
- Crystal lagoon
- Bespoke gym
- Club House with F&B services



Al Ain - Dubai Rd



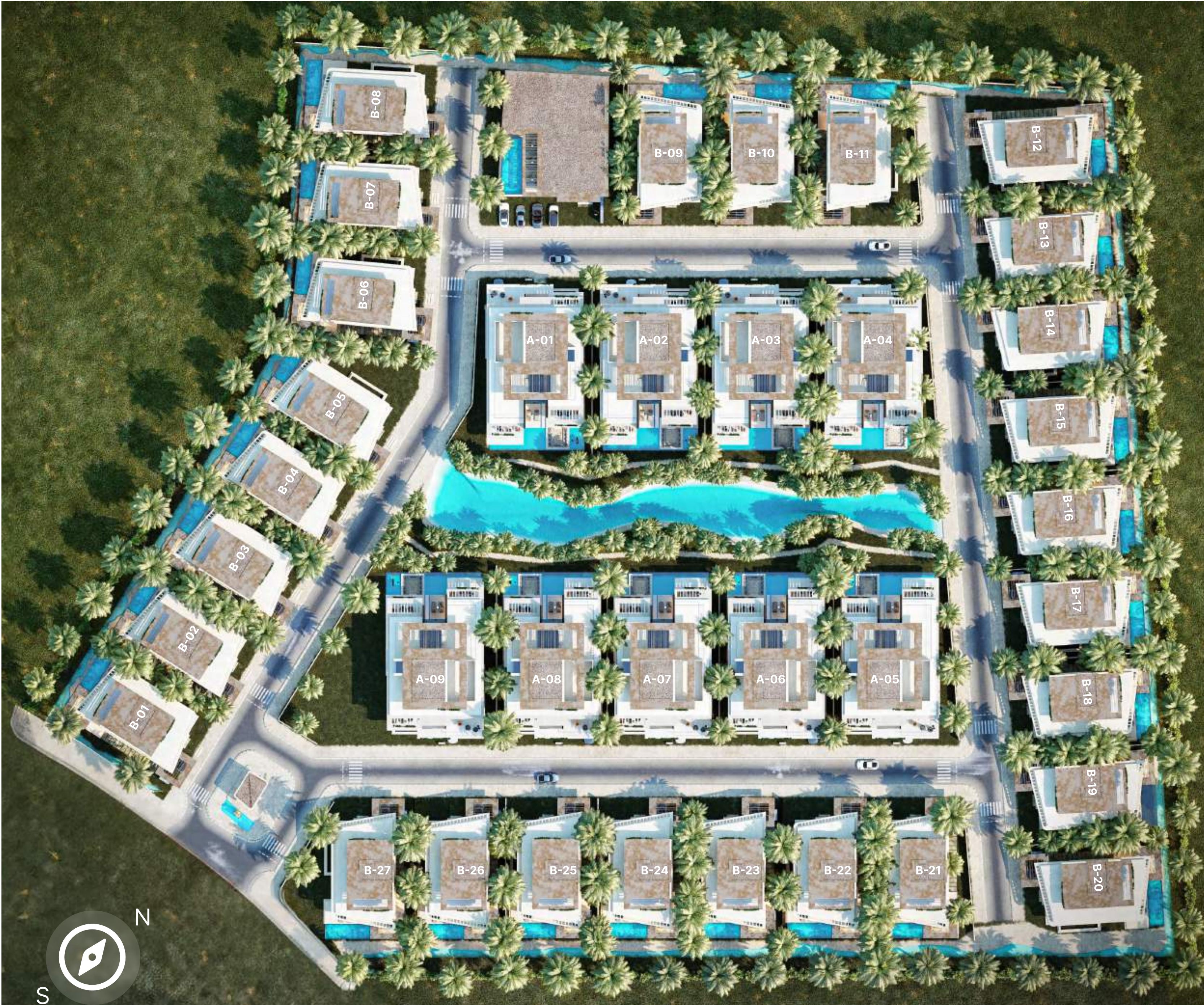


EXCLUSIVE SERVICES

24/7 Concierge
24/7 Security surveillance
24/7 Valet parking
Housekeeping services
Laundry services
In-residence babysitting
Grocery delivery
Residence event catering
Food Delivery

27 5-BEDROOM WATERFRONT VILLAS
7,212 square feet each

9 EXCLUSIVE 5-BEDROOM WATERFRONT MANSIONS
15,000 square feet each



BENTLEY HOME

The Bentley Home collection translates silhouettes and shapes synonymous with the British automotive legend into a language of impeccable Italian furniture.



BENTLEY

HOME



THREE FACES OF LUXURY

Each unit in Mira Villas designed by Bentley Home comes in one of three interior styles catering to your personal preferences.

TRADITIONAL



FORMAL



CONTEMPORARY



5 BED VILLA

7,212 square feet

4 main bedrooms on the first floor

1 guest bedroom on the ground floor

Lagoon view



5 BED VILLA TRADITIONAL



5 BED VILLA FORMAL



5 BED VILLA CONTEMPORARY



5 BED MANSION

15,000 square feet

4 main bedrooms on the first floor

1 guest bedroom on the ground floor

Lagoon view



5 BED MANSION TRADITIONAL



5 BED MANSION FORMAL



5 BED MANSION CONTEMPORARY



5 BED MANSION
PRIVATE GYM



5 BED MANSION
PRIVATE CINEMA





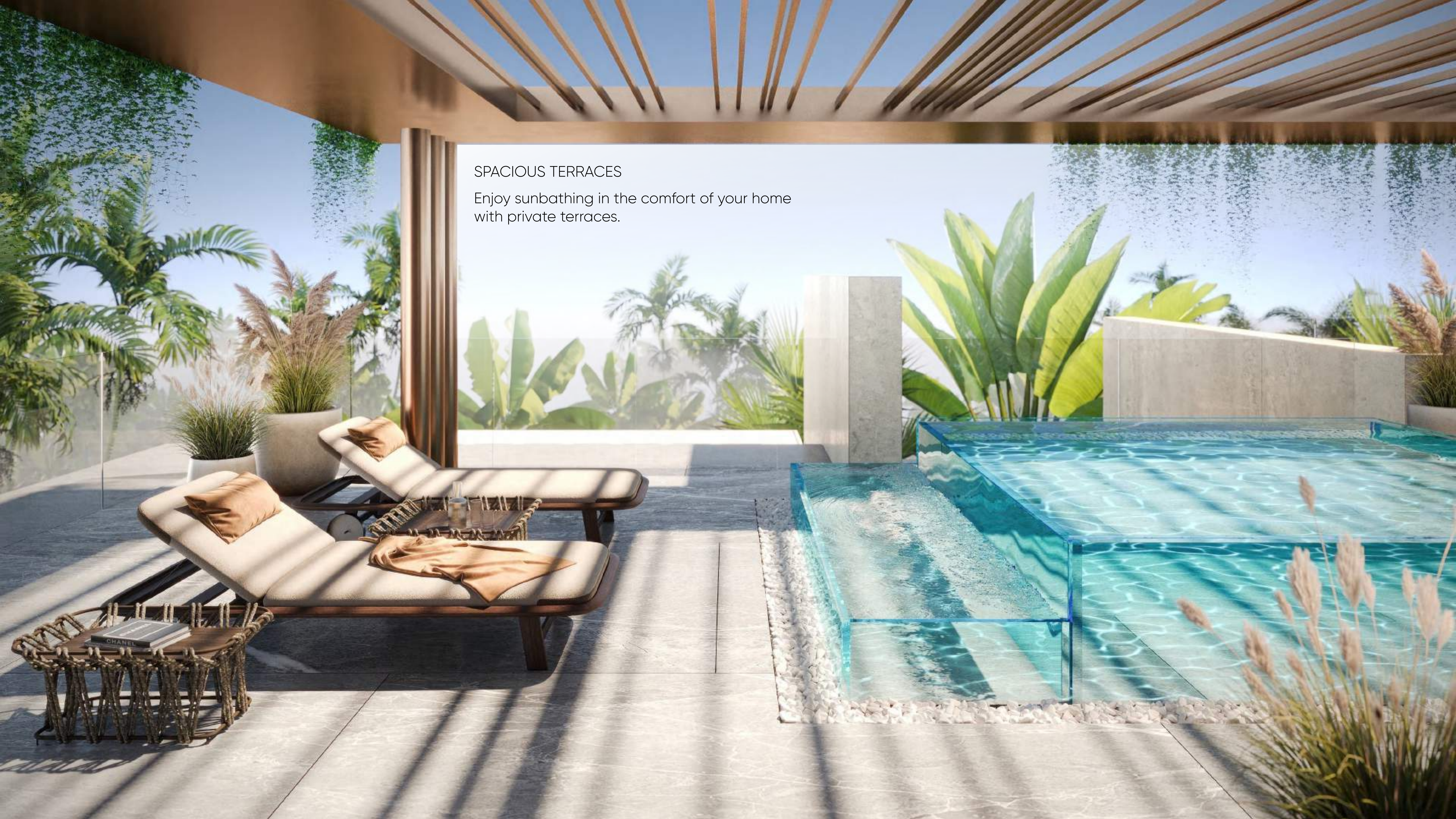
PRIVATE LAGOON

Every single unit enjoys a waterfront location and lagoon views.



BESPOKE GYM

The community features a custom-designed gymnasium by Technogym and a dedicated club house offering F&B services and a relaxed ambience.

A modern outdoor terrace featuring two lounge chairs with beige cushions and orange towels, a small wicker table with a book, and a rectangular pool with a glass border. The terrace is surrounded by lush tropical plants and a wooden pergola structure.

SPACIOUS TERRACES

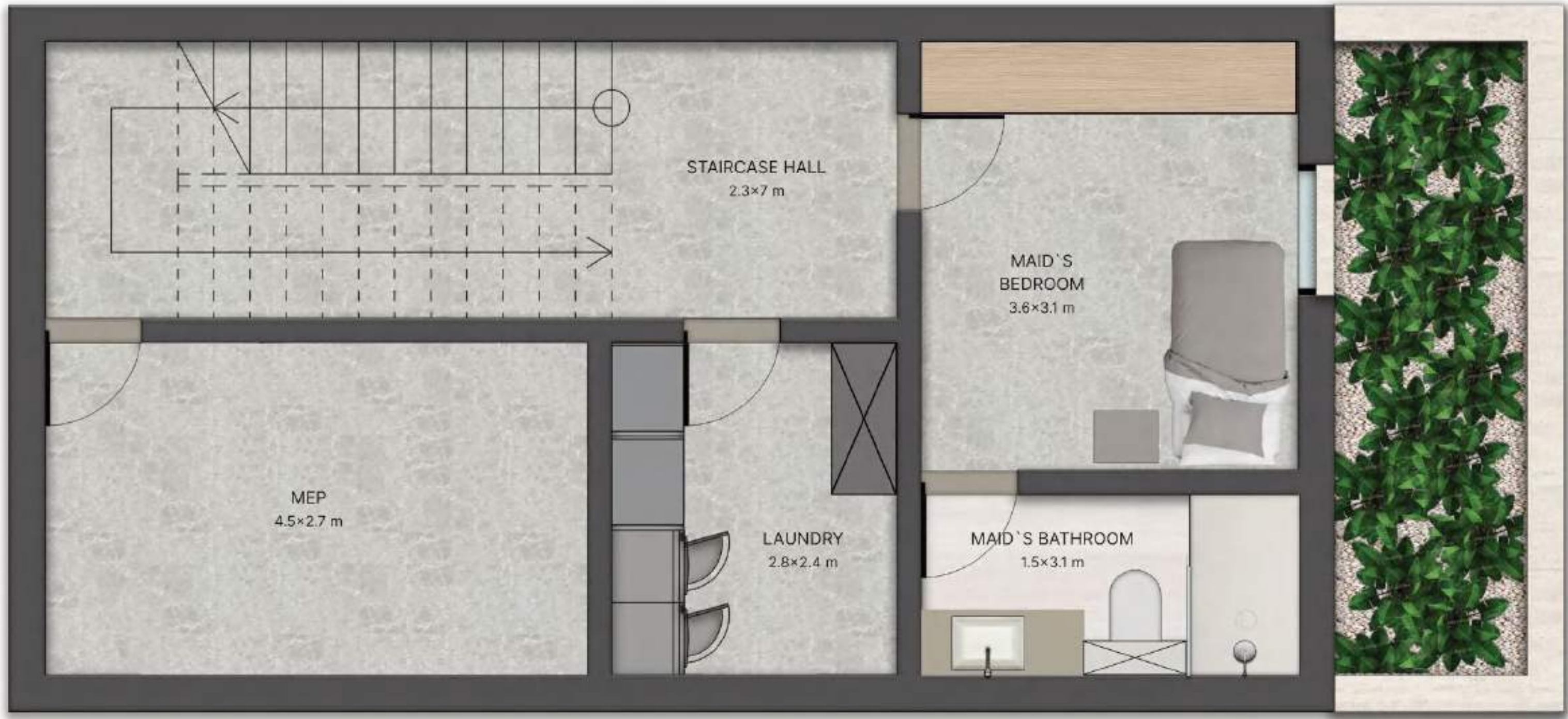
Enjoy sunbathing in the comfort of your home with private terraces.

READY TO MOVE IN

All units are handed over featuring household appliances by renowned brands.

- Dishes by Bernardaud
- Flatware by Christofle
- Home lighting by Lalique
- Bed linen by Frette
- Kitchen appliances by Gaggenau





LOWER GROUND FLOOR

FLOOR PLANS

5 BED VILLA

TRADITIONAL

670 SQ M / 7 212 SQ FT



GROUND FLOOR

FLOOR PLANS

5 BED VILLA

TRADITIONAL

670 SQ M / 7 212 SQ FT



FIRST FLOOR



SECOND FLOOR



LOWER GROUND FLOOR

FLOOR PLANS

5 BED VILLA

FORMAL

670 SQ M / 7 212 SQ FT



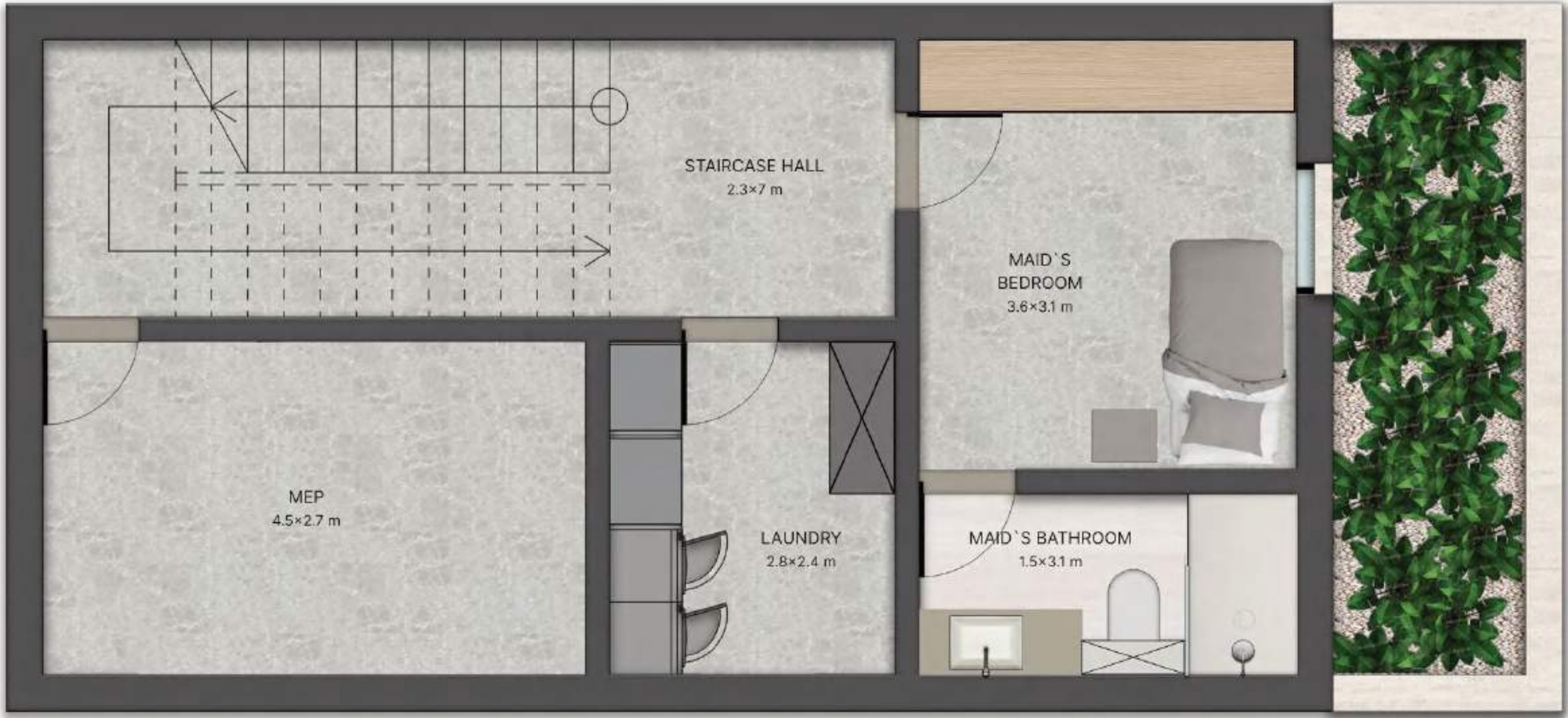
GROUND FLOOR



FIRST FLOOR



SECOND FLOOR



LOWER GROUND FLOOR

FLOOR PLANS

5 BED VILLA

CONTEMPORARY

670 SQ M / 7 212 SQ FT



GROUND FLOOR

FLOOR PLANS

5 BED VILLA

CONTEMPORARY

670 SQ M / 7 212 SQ FT



FIRST FLOOR



SECOND FLOOR



LOWER GROUND FLOOR

FLOOR PLANS

5 BED MANSION

TRADITIONAL

1400 SQ M / 15 000 SQ FT



GROUND FLOOR

FLOOR PLANS

5 BED MANSION

TRADITIONAL

1400 SQ M / 15 000 SQ FT



FIRST FLOOR

FLOOR PLANS

5 BED MANSION

TRADITIONAL

1400 SQ M / 15 000 SQ FT



SECOND FLOOR

FLOOR PLANS

5 BED MANSION

FORMAL

1400 SQ M / 15 000 SQ FT



LOWER GROUND FLOOR

FLOOR PLANS

5 BED MANSION

FORMAL

1400 SQ M / 15 000 SQ FT



GROUND FLOOR

FLOOR PLANS

5 BED MANSION

FORMAL

1400 SQ M / 15 000 SQ FT



FIRST FLOOR

FLOOR PLANS

5 BED MANSION

FORMAL

1400 SQ M / 15 000 SQ FT



SECOND FLOOR

FLOOR PLANS

5 BED MANSION

CONTEMPORARY

1400 SQ M / 15 000 SQ FT



LOWER GROUND FLOOR

FLOOR PLANS

5 BED MANSION

CONTEMPORARY

1400 SQ M / 15 000 SQ FT



GROUND FLOOR

FLOOR PLANS

5 BED MANSION

CONTEMPORARY

1400 SQ M / 15 000 SQ FT



FIRST FLOOR

FLOOR PLANS

5 BED MANSION

CONTEMPORARY

1400 SQ M / 15 000 SQ FT



SECOND FLOOR